

## **Historic, Archive Document**

Do not assume content reflects current scientific knowledge, policies, or practices.



62.67

LIBRARY  
RECEIVED  
★ JAN 30 1948 ★  
U. S. Department of Agriculture

W.M.  
**SCARFF'S**

50ms  
*Cultural*  
*Guide* 1948



*Robinson*  
*Scarlet Beauty*

# Paradise Asparagus

**Sensationally New, Early-Maturing Variety Superior Quality**

Produces normal crop **ONE YEAR EARLIER** than other varieties and produces heavier throughout its life. Large, crisp, tender stalks with exceptionally fine, mild flavor. Only six or eight stalks required to the pound. Ideally suited for freezing, the superior taste being retained. Strongly rust resistant. An excellent variety for home gardens, commercial growers and shippers.

**Mary Washington Asparagus** This is the finest standard variety now grown. Makes a heavy growth, ready to cut early and continues to ripen over a long season. Even though you already grow Asparagus, add one or both of these excellent varieties to your planting. You will be more than pleased with their superiority both for table use and commercial planting.

**For Asparagus Prices See Bottom of Page.**



**New Paradise Asparagus**

## Cultural Directions For Either Fall or Spring Planting

**Asparagus**—Prepare ground by deep plowing or spading. Set plants twelve to eighteen inches each way, three inches deep, with roots well spread out. Every fall mulch the bed with well rotted manure, ashes and salt. During the growing season dust the foliage several times with a mixture of 85% Sulphur and 15% Arsenate of lead to kill the slugs and to prevent rust.

**Rhubarb**—Prepare ground as for asparagus. Set the plants with crown or eye two inches under ground. Plant two to three feet apart each way. Mulch in winter. Give clean cultivation the same as for any other crop.

**Horseradish**—Thrives best in deep moist fertile soils. Set the roots 12 to 15 inches apart either horizontally or upright and in furrows 3 to 3½ ft. apart. Clean cultivation and the roots are ready to dig in the Fall.

## CARFF'S New Red Rhubarb

**MACDONALD** Here is a new very high quality, highly colored attractive bright red Rhubarb of large size stalk, very tender and succulent. Particularly valuable for pies and desserts. MacDonald requires less sugar for cooking than any of the old standard varieties. Plant some of this splendid Rhubarb this year. It yields heavily and lasts a lifetime. When once you have tried MacDonald you will try no other. Supply limited. Price, strong division, 60c each; 5 for \$2.50 postpaid.

**For Rhubarb Quantity Prices See Bottom of Page**

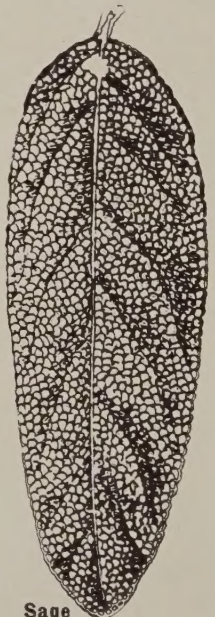
## Linneaus Rhubarb

The standard variety for general planting. Indispensable for home use in making pies, sauce and as a general Spring Tonic. A most profitable crop for market in field culture or forcing. Our select strain of this Linneaus variety is early and produces large tender stalks with good color and high quality. 2 yr. roots 25c each; 5 for \$1.15, postpaid.

## CARFF'S Maliner Kren Horseradish

**America's Most Popular Relish—An Essential of Every Old-Fashioned Garden—A Commercial Moneymaker.**

**Maliner Kren**—This Bohemian variety makes an enormous yield and is so early that it can be marketed before the common kind is ready, besides, the roots are much larger and whiter. The roots sell readily on market, and yield as high as 4 to 6 tons per acre. It requires about 10,000 sets for an acre, and the crop is ready for the market the first year. It is easy to grow, every plant will live. Try at least 1,000 sets if you cannot plant an acre. It is ready sale in any of the large cities.



**Sage**

PRICES of Asparagus Roots, Etc.	Postpaid		By Express Not Prepaid		
	Per 25	50	100	500	1000
Paradise Asparagus, 1 yr. ....	\$ 1.75	\$ 2.95	\$ 4.15	\$12.75	\$20.75
2 yr. ....	2.50	4.05	6.00	18.75	31.50
Mary Washington Asparagus, 1 yr. ....	1.50	2.50	3.95	12.00	20.00
2 yr. ....	2.25	3.65	5.50	17.50	30.00
New MacDonald Rhubarb Divisions ..... (60c each—5 for \$2.50)	10.00	18.00	32.50	150.00	275.00
Linneaus Rhubarb, 1 yr. (6 for \$1.00) .....	3.50	6.00	9.00	30.00	50.00
2 yr. (5 for \$1.15) .....	5.00	8.50	12.00	42.50	75.00
Maliner Kren Horseradish			5.10	15.50	22.50
Root Cuttings (5 for 75c) .....	2.00	3.50			
Whole Roots (5 for \$1.35) .....	4.00	7.00	10.50	37.50	60.00

— Special Prices Quoted in Large Quantity Lots for Commercial Plantings —

**SAGE—SPEARMINT—SWEET ANISE—Price 35c each, 5 for \$1.55 postpaid.**

**SPECIAL NOTICE** When order includes Nursery items priced in Catlog as "Prepaid" and others "Express collect," the entire order will be sent "Express Collect." In this case you may deduct 5% from the "Postpaid" prices when remitting.

# SCARFF'S NURSERY AND SEED FARMS

1500 ACRES. CATALOG FREE  
DRIVE IN. NEW CARLISLE, O.

## A FRUIT GARDEN FOR EVERY HOME

GET THE HIGHEST QUALITY FROM SUGAR-RICH BUSH RIPENED  
FRUIT—PICKED FRESH AND BRIM FULL OF VITAMINS

1. Developing the fruit garden takes you out of doors in the pure open air and to get that mild exercise so necessary to keep you in the "Pink of Condition."

2. These home-grown fruits are always a joy to the gardener and are just as much fun to grow in your garden as flowers or shrubbery and besides they will provide the natural vitamins necessary to balance the deficiencies of our modern diet.

3. Good health and a good avocation help to relieve the stress of present-day living.

4. Scarff's Nursery Stock and Farm Seeds will give you that extra value always so necessary for the success or profit in any venture.

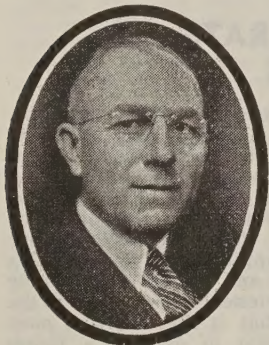
**Guarantee on Nursery Stock** We warrant our nursery stock true to name, with the express understanding that should any not prove so we will refund the money paid or replace with other stock of equal value, but are not liable for damages beyond this amount. We exercise every precaution to keep all varieties from mixtures. Propagating buds and wood are taken from our own bearing orchards and accurate records are kept of all stock in nursery row. All shipments are packed carefully and we guarantee all plants in good condition on arrival.

**Claims** or complaints on condition of stock on arrival must be made promptly on receipt of same and satisfactory adjustment will be made. The living of trees and shrubbery is largely dependent upon conditions of weather and after care beyond the Nurseryman's control; therefore, we do not guarantee any stock to live other than leaving the nursery in good condition and safe arrival to our customers. Nevertheless, we will replace any nursery stock, except evergreens, at half purchase price if the complaint is made by July 15th of that same year.

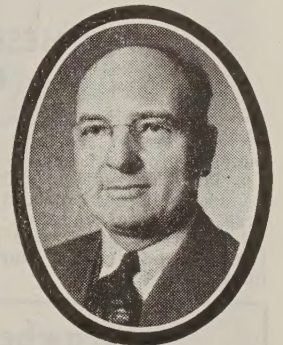
## Farm Seed Disclaimer . . .

We allow you 15 days to test it any way you see fit, and if at the expiration of this time it is not entirely satisfactory, return it to us promptly by freight. Send us the bill of lading and we will refund your money, but we do not warrant in any way, express, or implied, the contents, or the description, quality, productiveness, or any other matter of any seeds or plants sold by us and we will not be in any way responsible for the crop. If the purchaser does not accept these goods on the above terms, he must return them at once, and money will be refunded.

**Our Terms: Payments invariably in advance, or one-fourth down, balance C.O.D.**

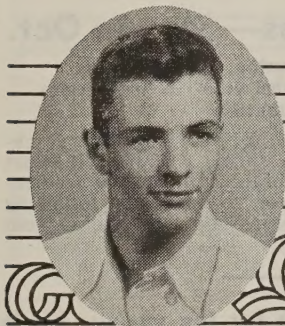


MAX M. SCARFF  
Mgr. Farm Seed Dept.

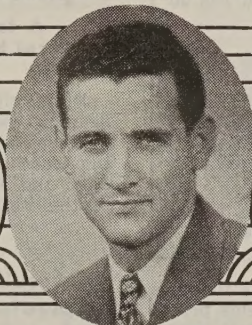


HOWARD N. SCARFF  
Mgr. Nursery Dept.

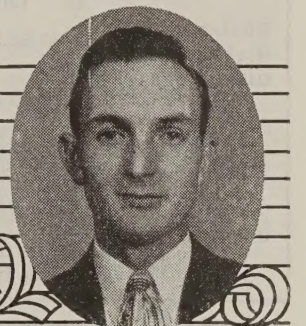
## A New Generation of Scarffs Insures the Future of Our Service



WM. N. SCARFF  
Majoring in Agriculture  
Ohio State University



JOHN E. MILLIKEN  
Farm Seed Dept.



JAMES F. SCARFF  
Mgr. Fruit Dept.

# Strawberries

**How to Grow Them:** Wherever you have a few feet of space in the garden you can plant Strawberries and feel well repaid by having an abundance of their delicious fruit in season. You will find that your home grown fruit, that can be picked absolutely fresh, has a much finer and sweeter flavor than the shipped fruit or that picked several days before being eaten.

Any good rich soil will grow Strawberries. Plant them in rows about 1½ ft. and 3 ft. apart. Keep the soil well cultivated and hoed the first year and when the ground freezes up in the fall put on a medium to light mulch of straw or leaves. Water the plants when setting. Additional watering is desirable during extreme dry periods of the summer. Rich, well decomposed manure is best fertilizer. If not available, then make spring application of any good commercial fertilizer rich in Nitrogen.

## A Luxury for the Home Garden

Most Delicious for Home Use—Greatest Money Makers for Market.



Gemzata Berries  
60 Days After Planting

Plant any of the varieties of strawberries we are offering. Give them good care and you can depend on them producing plenty of large delicious berries like these.

## EVERBEARING VARIETIES

THESE TWO VARIETIES ARE THE ARISTOCRATS OF ALL EVERBEARING STRAWBERRIES

**Gemzata** Best Everbearer for a good matted row and heaviest yield; also most dependable for both the Spring and Fall crops. Berries are large, sweet and delicious flavor—so sweet that no sugar is needed, and are perfect for serving as dessert and for canning. At the time of this writing (Oct. 10th) we are still picking plenty of these fine Gemzata berries for our personal use here in the nursery test rows.

**Streamliner** New Sugar Sweet Variety—Large size and rich red clear to the core. Considered by nurserymen to be the finest everbearing variety. It is especially recommended for the Hill System and general garden planting. The berries are large in size, very highest quality, rich red in color and sugar sweet. They just melt in your mouth. Also excellent for canning and freezing. The spring crop comes on early and compares favorably with other spring bearing varieties. However, it is the late summer and fall crop that is the best and most appreciated. The berries seem to develop a richer flavor and deeper red color. Here is one variety which is a "must" for every home garden.

### Strawberry Prices

Sold Only in Multiples of 25

	Postpaid		By Express Not Prepaid		
	25	100	250	500	1000
Dunlap.....	\$ 1.05	\$ 2.85	\$ 5.25	\$ 8.50	\$ 15.00
Blakemore.....					
Other Standard Varieties .....	1.25	3.00	6.75	10.00	17.50
Gemzata Everbearing ..	1.85	4.25	10.00	17.50	
Streamliner (New Superior Everbearer) .....	2.50	6.25	13.50	23.50	

**Quantity Prices:**

3000 to 5000 lots, 10% less than 1000 rate.  
5000 lots and up, 15% less than 1000 rate.

### Ripe Strawberries—May to Oct.

A fall crop three months after planting.  
Three heavy crops of sweet vine-ripened berries in 18 months.

Plant either the Gemzata or the Streamliner everbearing varieties in early spring. They will start bearing late summer and continue until heavy freezing weather. The second crop is picked the following May and June; the third crop follows in the autumn of the same year.

**SPECIAL NOTICE** When order includes Nursery items priced in Catalog as "Prepaid" and others "Express Collect," the entire order will be sent "Express Collect." In this case you may deduct 5% from the Postpaid prices when remitting.

Brief cultural directions for the various kinds of plants are included in this Catalog. With each order of Nursery stock you will receive free a copy of our Booklet "Successful Planting."

# Strawberries

STANDARD SPRING BEARING VARIETIES

## Dorsett and Fairfax

**Highest Quality—Largest Size of any of the early season Strawberries**

**Dorsett** is the early variety surpassing Premier in quality and production.

**Fairfax** is supreme in quality—a flavor you can't forget. Berries intense bright red, with waxy luster and are outstanding for the home garden and local market.

**Premier (PER.)** The Premier is one of the most popular varieties that we offer and it well deserves all the praise that can be given it.

1. Premier is the first to ripen.
2. Fruit large size and deep red color.
3. Firm flesh and excellent quality.
4. Heavy yielder and makes thrifty growth.
5. You can depend on Premier for a good crop when other varieties are a failure.

**Catskill** An outstanding midseason variety introduced by the New York Agric. Experiment Station and well stands at the top as a late midseason variety of large size berries, heavy yields and a sure cropper. The large bright red berries are most attractive even though not as fine a finish as some of the early varieties. Quality equal to Premier, ripens in midseason and continues through the late picking period.

**Sparkle** This new variety ripens after Catskill, thus extending the strawberry season with quality berries to the last. It has all of those good characters you want in a variety for table and culinary use, so it ranks "Tops" for home planting. The berries are good medium size, most attractive, slightly dark red in color, and with a glossy finish almost like they were varnished. Sparkle has much the quality of Fairfax (one of its parents) and is an excellent freezing variety, ranking above most others for this purpose. The plants are vigorous and make an abundance of runners.

### Special Strawberry Garden

25 Fairfax	} Regular Price \$5.00
25 Robinson	
25 Catskill	
25 Sparkle	
} Special Garden Collection Price, \$4.35 Postpaid	
50 Each above varieties	(\$10.00 value)
200 Plants,	\$7.65 Postpaid.
100 Each above varieties	(\$12.00 value)
400 Plants,	\$10.75 Postpaid.

### VARIETIES TO PLANT

For the Home Garden

**Early:** Dorsett (bright red) and Fairfax (dark red).

**Early Midseason:** Robinson

**Midseason:** Catskill

**Late:** Sparkle

**For Commercial Planting:**

Premier, Robinson, and Catskill, in order of ripening. Sparkle for trial as a late variety.

## NEW ROBINSON

(Scarlet Beauty)

**Berries Large as Golf Balls  
Honey Sweet Flavor**

The New Robinson is an early mid-season berry following Premier by about 5-7 days. Here is a new variety originating in the commercial fruiting section of Michigan that is gaining favor by leaps and bounds for both home and market. This popularity is well deserved because of its wide adaptability and habit of making a better plant row than Premier, because of its fruitfulness (almost half again as many as other standard varieties), and its very large attractive berries—which, of course, bring top prices on the market. One large grower has acclaimed, "These (Robinson) berries in all respects are the finest we have had in the past twenty years."

ROBINSON is a berry that rates as "Tops" in large size, true bright red Strawberry color, and as fine quality berry as you have ever tasted.

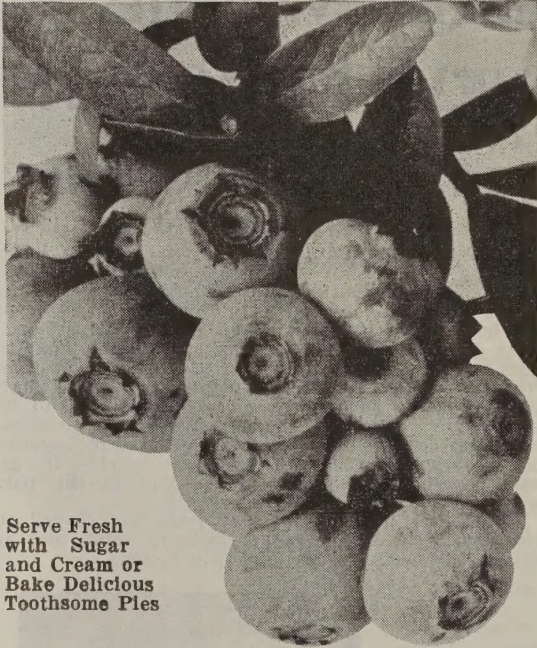
This Photograph, along with a special write-up appeared in the June 8th issue of the Springfield, Ohio, News-Sun. Mrs. Yoder's strawberries were the talk of the community.



Strawberries virtually the size of golf balls were gathered last week by Mrs. Robert Yoder of Springfield, Ohio. Mrs. Yoder said the NEW ROBINSON variety produces many berries  $4\frac{1}{2}$  to  $5\frac{1}{2}$  inches in circumference.—Springfield News-Sun—June, 1947.

Mary Hodges      May 6, 1947      South Dakota  
Dear Sirs: The trial order of berry plants just received from you are the most perfectly packed of any Nursery Stock ever received over a long period of years. The bushes look as though they had just been dug.

# Blueberries



Serve Fresh  
with Sugar  
and Cream or  
Bake Delicious  
Toothsome Pies

Blueberries Large as Grapes

## Improved U. S. Gov't. Hybrids

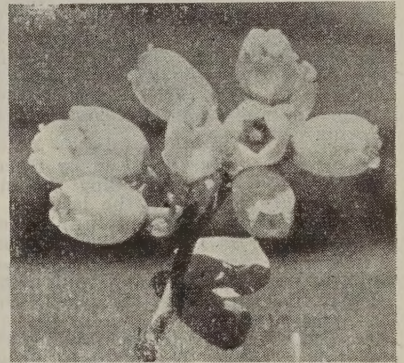
Delicious Flavor—Profitable—Ornamental

Large clusters of sapphire blueberries; plump, tender, practically seedless, the size of grapes and far superior to the wild Blueberries in flavor.

**Delightfully Ornamental**—No shrub is of greater beauty the year round than the Blueberry. During the summer the foliage is a deep, rich satiny green, and against this background hang clusters of berries royal in their magnificence. The leaves are crimson and a bronze in autumn and twigs red in winter. In the spring are the pink buds and the white flower bells.

Finest varieties developed by the U. S. Dept. of Agriculture. We are offering RANCOCAS, RUBEL and JERSEY varieties ripening from early to late in order named. All large fruited, highest quality, widely adapted and thrifty upright growers. Plant at least two varieties together to insure proper pollenization.

**SCARFF'S Blueberries** are the largest cultivated varieties, improved by the Government in the Whitesbog country of New Jersey. Give them an acid soil condition and plenty of moisture. They start to bear in one or two years and will continue to produce heavy crops for many years.



Blueberry Blossoms

Delicate sparkling white and as attractive as orange blossoms.

## Prices on Cultivated Blueberries

By Express F.O.B., New Carlisle, Ohio

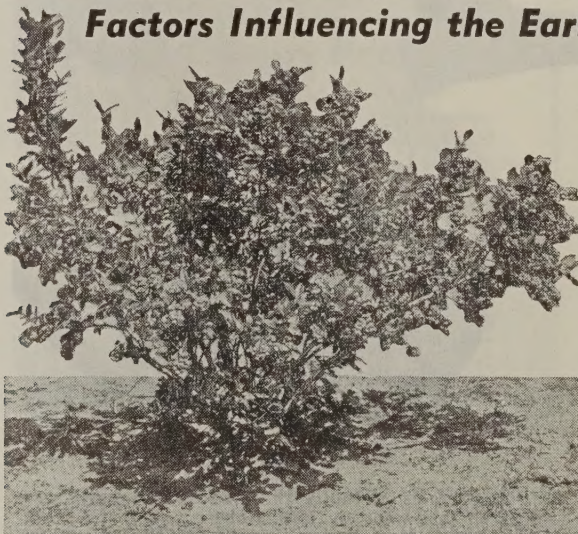
Price for Heavy Plants	Each	3	10	25	100
6-12"	\$1.25	\$3.25	\$ 9.50	\$20.50	\$ 66.25
12-18"	1.65	4.50	12.50	26.75	85.00
18-24" Heavy Bearing Age	2.50	6.85	17.50	41.25	125.00

Plant two or more varieties together for proper pollenization.

Finest Horticultural Acid Peat Moss for Blueberries—\$1.00 per bag. (Approx. 1 Bu.)

Cultivated Blueberries prefer an acid soil containing an abundance of peat or other partially rotted vegetable matter. They also need a moderate supply of moisture and good drainage. If your soil is not already acid this condition may be created easily by mixing with the surface soil a liberal quantity of acid peat, partially rotted leaves, pine needles, sawdust or chip dirt. Flowers of Sulphur will also help to maintain soil acidity.

## Factors Influencing the Early Bearing of Small Fruit Plants



Attractive Shrubs Loaded with Delicious Blueberries—  
Finest of the Ornamental Fruits.

1. Set out plants as free from disease as possible. At all times dig out and burn any plants which are distinctly unhealthy. This does not apply to leaf spot or anthracnose on the leaves which may be controlled by spraying. (See spray recommendation for the various plants on other pages of this catalog.)
2. Keep your plantings in good culture by frequent stirring of the soil, and free from weeds and grass.
3. Top dress with an abundance of nitrogen fertilizers in early Spring—checking growth in early August. Oats is often planted between the rows at that time as a cover crop.
4. Loose, loamy, well-drained soils rich in humus are best for all berry plants; a northerly slope is desirable but not a necessity. Avoid low ground and frost pockets.
5. Set out varieties adapted to your locality. Most of our catalog descriptions cover this point.
6. The Everbearing varieties of Raspberries and Strawberries will usually produce some fruit the first Autumn after planting.
7. At all times follow good cultural practices. Many of these are listed briefly in this catalog and in our "Successful Planting" booklet which is mailed with each order.



# Scarff's Registered Raspberries

Grown by The Ohio Small Fruit Improvement Association

The first step in successful fruit culture is to secure strong disease-free plants.



Berries such as these are produced by Registered Plants

## • REGISTERED VARIETIES •

**LOGAN** This is the most popular variety with the members of the Ohio Small Fruit Improvement Association. Several reasons for this choice are:

(1) The inherent resistance of Logan to some of the deadly Virus diseases and its ability to stand adverse conditions in general.

(2) Given good culture and an abundance of Nitrogen fertilizer, Logan has proven more productive than Cumberland, a long time favorite. One of the Association growers states, "Our best yield from the New Logan Variety was 3700 quarts per acre. Cumberland under comparable conditions in the same planting that year yielded 2500 quarts per acre."

(3) The Logan crop is produced early and usually before the summer drouth conditions become critical. Every Commercial planting of Black Raspberries should include at least one-third to a half of the Logan variety.

We have a very fine stock of Registered Logan plants this year.

**BRISTOL** This variety is rapidly gaining favor for both home and commercial planting because of its high quality fruit and wide adaptability of the plants. (For more complete description see page 7.)

**CUMBERLAND** This variety has been the standard of all Blackcap Raspberries for a long period of years and still is the choice of both the home and commercial growers who understand its weakness and keep their plantings in full vigor. The berries are large and of the very highest quality.

## What Are Registered Plants?

Registered Raspberry plants are extraordinarily free from disease; they are strong and vigorous and true to name. They are grown only by the Ohio Small Fruit Improvement Association. Registered plants are produced under regulations which allow not more than one per cent of virus disease and not more than one-fourth per cent of galled plants in the parent plantings.

Given proper isolation from outside disease sources and proper cultural care, Registered plants will produce for you a healthy, high yielding, profitable raspberry plantation for a long period of years. Losses from the virus diseases and from gall will be negligible. Yield records taken in many plantings from registered and unregistered stock have proved this. Look at the yield records.

Start right with the best stock obtainable—Registered.

### Prices Registered Raspberries

Registered plants available in Cumberland, Bristol, and Logan Blackcaps this year.

(For variety descriptions, see pages 5, 6, and 7)

Prices per	Postpaid		By Express Not Prepaid		
	25	50	100	500	1000
	\$3.50	\$6.00	\$9.00	\$35.00	\$50.00
3000 to 5000 lots—	\$45.00 per 1000				
5000 lots and up—	\$40.00 per 1000				

## LOGAN BLACK CAP

*Highly Resistant to Mosaic and Other Virus Diseases*

Every grower of Black Cap Raspberries should have a good block of this Logan variety. It is the best early Black Cap grown in Ohio and yields as heavy a crop as any midseason variety. It withstands dry, hot weather better than other Black Caps.

### Most Dependable Early Black Raspberry

The Logan is not a new variety here in Ohio as it has been grown for a number of years in one of our largest commercial berry sections. Among these growers this variety through sheer merit has replaced other standard kinds until at present more than three-fourths of the plantings are New Logan. The berry ripens one week earlier than Cumberland; it is a heavier yielder and the glossy black berries are as large as that variety. It holds well through drought and in fact the last picking has always proven as fresh and free from seediness and tendency to crumble as the first.



### Highest Prices on Early Market

One of the New Logan's outstanding characteristics is its resistance to the more serious virus diseases of raspberries. It seems to outclass all other black cap varieties in this respect and this is one of the primary reasons why it has gained popularity among the growers who depend on black raspberries for their livelihood.

The Raspberry plants offered on pages 5, 6 and 7 of this Catalog are State Certified plants complying with the standards of inspection set up by the Central Plant Board and may be shipped anywhere in the U. S. (except certain counties in Oregon).

# MORRISON BLACKCAP

• *The Outstanding New Late Season Raspberry* •

### BEST ADAPTED TO NORTHERN STATES

Our experience to date (1947) with this New Morrison Raspberry, after having it grown in many sections of the United States, is that it does the best in the northern half of the fruit belt—north of Cincinnati, Ohio. Like all other black raspberry varieties, it is subject to Anthracnose which may be easily controlled by spraying. For Central and Southern sections, the Bristol Black Cap seems best adapted.

**A Money Maker for the Commercial Grower and a Berry that You Will Be Proud to Produce**  
Originated in Northern Ohio as a chance seedling by the late Fred Morris

We quote Mr. Morris: "In fruit it has the biggest black raspberries that I have ever seen and I have been growing Cumberland for years but they look small beside the Morris (introduced as Morrison). Had vines that were 12 years old and still doing well."

**MORRISON is being enthusiastically accepted by the commercial growers who have seen it. Here is what they say:**

"Not just another Black Cap."

"Largest Black Raspberry I have ever seen."

"The most promising late black raspberry growing at the New York Station."—Geo. L. Slate.

"Morrison proving the most outstanding Black Cap I have ever seen and I guess I have grown most of them."

"Larger and firmer than Cumberland. Does not crumble. Hold their size to the last of the picking season."



**New Morrison Blackcap**

MORRISON Berries hold up longer in grocery and market displays. They will outyield other black raspberry varieties and finally They Make More Dollars for the Grower.

### SCARFF'S BERRY PLANTS ARE BETTER

1. Over 50 years' experience with small fruit plants and we now offer the best varieties for home and commercial planting.

2. Heavy, well-rooted plants in excellent growing condition. You can depend on satisfaction with the stock we send you.

3. All raspberry plants have been twice inspected in the field in the growing season and may be shipped into any state, except certain counties in Oregon.

MORRISON excels as a berry for both home and commercial planting. The large attractive berries meet all culinary requirements. They are high in quality, firm texture, juicy, not so seedy as other blackcaps.

### GROWER LIKES MORRISON

Here is a statement from the grower who produces our Morrison plants. He is one of the best in the business and his plantings as fine as can be found anywhere. He states: "The heaviest picking was July 14th; we had a 4000-quart picking that day. The size of berries was large and held up to the last picking. Those sold to wholesale brought 60c per quart, while other varieties including Cumberland brought 50c on the same market. I sent none to Pittsburgh, but my neighbor sent some Morrison and they sold for \$14.40 per 24-quart crate. The general market was \$12.00 per crate."

In planting these Bearing Age Raspberries it is important to cut the tops back to within 10 or 12 inches of the ground. This may reduce the quantity of fruit produced the first year, but at the same time it will assure you of a good substantial growth so necessary to establishing the plant for future production.

### Summer Pruning of Black Raspberries

In order to promote strong stocky plants, the terminals of new blackcap canes should be pinched out when they reach a height of 18 inches. This procedure stimulates lateral growth which will produce most of the fruit the following year. Fruiting canes are removed immediately after harvest.

**WINTER PRUNING**—Blackcaps should be pruned in late winter. The laterals should be cut back very severely to a length of 8 to 12 inches from the main cane.

### BEARING AGE RASPBERRY PLANTS

Gain a year and produce fruit the first season. This is choice stock and we can furnish at the following prices:

Prices per	Postpaid			By Express Not Prepaid			
	12	25	50	1100	250	500	1000
Indian Summer (Everb.) .....	\$3.25	\$4.95	\$9.50	\$16.75	\$37.50	\$65.00	\$90.00
Marion (P'ple)							
Cumberland (Black) .....							
Latham (Red) ..							
Newburgh (Red) .....	2.80	4.50	8.25	13.60	31.25	55.00	80.00
Sunrise (Red) ..							
Taylor (Red) ..							
Chief (Red) ....							

See page 7 for prices of 1 yr. Black Raspberry plants.

Russell L. Gullo New York

Dear Sir: We firmly believe that the Morrison is the best Black Raspberry ever developed. The berries are very large and firm, making them ideal for shipping. Very few farmers in our vicinity have this berry, thus many people have been amazed at the size and quality of these berries.

# BRISTOL

HIGHEST QUALITY  
WIDELY ADAPTED

• Best Variety for Home Planting. Thrifty in Growth—Very Productive. •

The first step in successful fruit culture is to secure strong disease-free plants.



## Suggestions for Successful Raspberry Growing

1. Plant dependable disease-free stock and maintain proper isolation from other diseased or wild plants.
2. When setting out black raspberry tip plants always cut off the old stem (or "handle") as growth will come from the crown of the plant.
3. It is generally recommended that red and black Raspberries should not be grown within at least 20 rods of each other. An exception to this would be that our Logan Blackcap and Newburgh or Marcy Red Raspberries are sufficiently disease resistant that they can be planted side by side.
4. Any plant showing any symptoms of disease should be promptly removed and burned.
5. All Raspberry plants should be set very early in the spring. Better have us reserve your planting stock now and we will send to you at proper season.
6. All Raspberry plants are benefited by liberal applications of manure, Sulphate of Ammonia or other Nitrogen fertilizer.
7. To maintain bright clean thrifty canes and control Anthracnose use Dry Lime Sulphur 12 pounds to 50 gallons water. Spray each spring while still dormant on buds just beginning to show green. When the tip plants are first set out cut off the old stems to the ground.

**BRISTOL** is an excellent quality berry, large, glossy and attractive. The bushes are hardy, vigorous and bear very heavy crops of the most delicious fruits. Although a comparatively new variety, Bristol has already taken a high ranking place among the best of the Blackcap Raspberries for both home and commercial planting.

## BRISTOL Has Rapidly Gained Popularity as The Best Midseason Blackcap.

Commercial growers from the New York and Michigan berry sections, down as far south as Oklahoma, highly praise this Bristol. It has proven to be very thrifty in growth and most productive and the very highest quality of all Blackcap varieties. We have found it to be widely adapted and producing heavy crops even in the semi south and southwest where heat and leaf spot are ruinous to other kinds.

Unexcelled for Pies, Canning and Freezing.

## Early Planting is Best

All Raspberries prefer a good well drained loam soil high in fertility and the best fruits are produced only when plenty of fertilizer, high in Nitrogen, is supplied. Plant early in the spring just as soon as you would plant your early onions in the garden. Here in central Ohio this is the first of April. Prepare the ground carefully and in planting be sure to firm the earth well around the roots with loose soil over the growing buds, so that the plant sets just a little deeper than it was in the nursery row. Cut the old woody canes off at the surface of the ground. The average planting distance for all Raspberries is 3 feet apart in 6 foot rows. Do not permit the soil to bake or crust around the plants at any time. A mulch of good clean straw is desirable to hold a good even supply of moisture.

All Raspberries thrive best in loose, well-drained loam soils which contain an abundance of humus. Old Bluegrass and Alfalfa sods, if plowed under a full year in advance of berry planting, provide an ideal soil condition.

Commercial Planters, let us quote you special prices on blackcap raspberry plants in quantity lots.

See Page 6 for prices on Bearing Age Raspberry Plants.

### PRICES—BLACK RASPBERRY STATE CERTIFIED PLANTS

	Prices Per	Postpaid			By Express Not Prepaid			
		12	25	50	100	200	500	1000
<b>Strong 1 yr. plants</b>								
Morrison .....	\$2.00	\$3.50	\$6.00	\$9.00	\$16.85	\$35.00	\$50.00	
Bristol .....	1.85	3.00	5.80	8.60	16.20	31.50	45.00	
Cumberland — Logan .....	1.75	2.75	4.60	7.50	14.50	29.00	42.50	
3000 to 5000 lots—10% less than thousand rate.				5000 lots and up—15% less than thousand rate.				

# Newburgh *Bright Red Berries* *Resistant to Mosaic*

Heavy Yielding, Large Size and Highest Quality Fruits Make it a Most Desirable Variety for Home and Market Planting.

## Description of Newburgh

1. Has so far proven most resistant to Mosaic.
2. Very productive. Fruit very large and holds its large size over an unusually long season. Extremely hardy.
3. The flavor is mild and quality good, decidedly better than Latham.
4. Berries are attractive bright red, very firm and do not crumble.
5. Season of ripening is a few days earlier than Latham.
6. Plants are medium in height; canes stocky and well branched.
7. It is best to support the Newburgh canes with wire, stakes, or trellis as the heavy laden canes are often pulled to the ground.



Attractive Newburgh Berries

## Sunrise *Extra Early Red*

Ripens fully two weeks before Latham. Prolific fruiting, high quality, extreme hardness and health of the canes, and the good bright red colored berries make Sunrise the finest very early Red Raspberry. Especially desirable for the home garden because of the long fruiting season. Introduced 1939 by U. S. Dept. of Agr.

## Cultural Suggestions for the Red Raspberries

1. Planting distances and general care similar to Blackcaps (see pages 6 and 7).
2. Prune fruiting canes back approximately one-fourth of their total length during late winter. Thin out weaker sprouts leaving strong fruiting canes 6 to 8 inches apart in the "hedgerow." Be sure to take out old fruiting canes after harvest.
3. Dust foliage with sulphur to control leaf spot.
4. Cultivate thoroughly or mulch to retain moisture and keep weeds down. Check growth during August to mature wood that it may escape winter injury.

We consider Sodus the best all around purple Raspberry. Marion is larger in size and a beautiful berry—follows Sodus in season and is perhaps the largest of all Raspberries.

Both Sodus and Marion thrive better in Southern States than other Raspberry varieties. They seem to hold up better under drouth and heat conditions.

## Sodus

### *New Large Purple Raspberry*

Considered heaviest yielding of all Raspberries.

Attractive, firm, sprightly and good quality. Picks easily and does not crumble. Plants are hardy, vigorous, very productive of heavy annual crops which ripen shortly after Latham.

**Heaviest Yielding**—To our knowledge Sodus is the heaviest yielding of all Raspberries and if picked at the right stage has attractive color which brings a high market price.

**Drouth Resistant**—Sodus withstands drouth, heat and other adverse weather conditions and comes through with a crop when most varieties of Raspberries fail. We highly recommend it as a berry for home planting, local markets; and for commercial canning we believe it will completely replace Columbian, long the favorite.



Large Sodus Raspberries

## Marion *Largest of All Raspberries*

Very large, late purple Raspberry to follow Sodus in season of ripening. The berries are very large, holding up well in size throughout the season, moderately juicy, firm, tart and good in quality. The fruits tend to cling to the bushes but not so much as to be objectionable. The plants are vigorous, bear heavy crops, are hardy and tend to resemble a red Raspberry in appearance. Marion is the largest of all the purple Raspberries and possibly the largest of all raspberries we offer.

Prices—Red and Purple Raspberries. See pages 6 and 9.

# Marcy . . . Largest of All Red Raspberries

Has the qualities which make for a "TOP NOTCH" Variety

Individual berries are very large—largest of any at the New York Experiment Station—long conic, firm, thick fleshed, medium red with a bright gloss, mild in flavor and good in quality. Definitely superior in stature of canes which are hardy, vigorous, upright and producing their fruit well off the ground. We can highly recommend it for home planting because of its very large high quality berries, vigor and productiveness of the plants. Season two or three days earlier than Taylor. Marcy has been grown for four years in a test planting where Mosaic spreads very rapidly and thus far has escaped infection.

# Indian Summer

A Great New Everbearing Red, far superior to any other variety of this type. Produces two crops in one year. Prized for its extra early summer crop—before Chief or other early reds. Autumn crop starts in September and continuing until a heavy freeze. The fall fruits are quite firm and of decided commercial value. Berries are large, roundish conic, medium red, good in quality, rather soft but still firm enough for local market. The plants are vigorous and produce heavy crops both spring and fall. Indian Summer is an exceptionally fine berry for the home garden because of its two distinct crops the same year and its long fruiting season.

# Taylor

Most promising commercial variety at the New York Experiment Station Grounds.

The large, long, conic berries are firm, bright red in color, thick fleshed, sub-acid and of excellent quality. They do not cling to the bush as tightly as Newburgh. The plants are usually vigorous, tall growing and productive.

The pleasing sub-acid flavor and high quality will make Taylor a good sort for the home garden as well as for market. Taylor ripens about with Latham. It is the best late variety on trial at Geneva, N. Y.

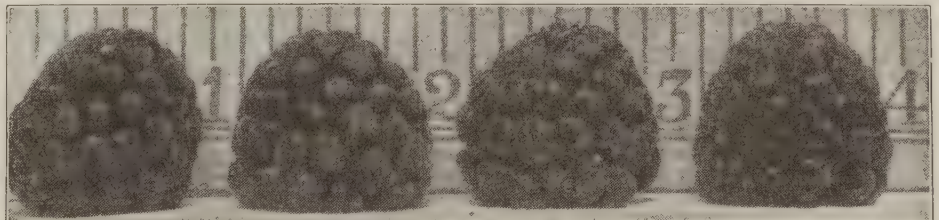
# Latham

Most Popular,  
Most Widely Grown

Latham is a thrifty growing plant, a very heavy yielder of large, bright red attractive berries of firm texture and high quality. The fact that it thrives and has proven profitable under such a wide range of conditions is the reason for its universal popularity. We can recommend Latham as one of the best midseason varieties for every section of the U. S., and for either home or market planting and know that it will give satisfaction.

5430 quarts per acre is the report of three-year tests by Connecticut Agricultural College. Figure the returns on the basis of the present market.

Fruit of Latham almost one inch in diameter, ripens in midseason, extremely hardy and easy to grow.



Marcy, Largest of all Red Raspberries

## Red and Purple Raspberry Prices

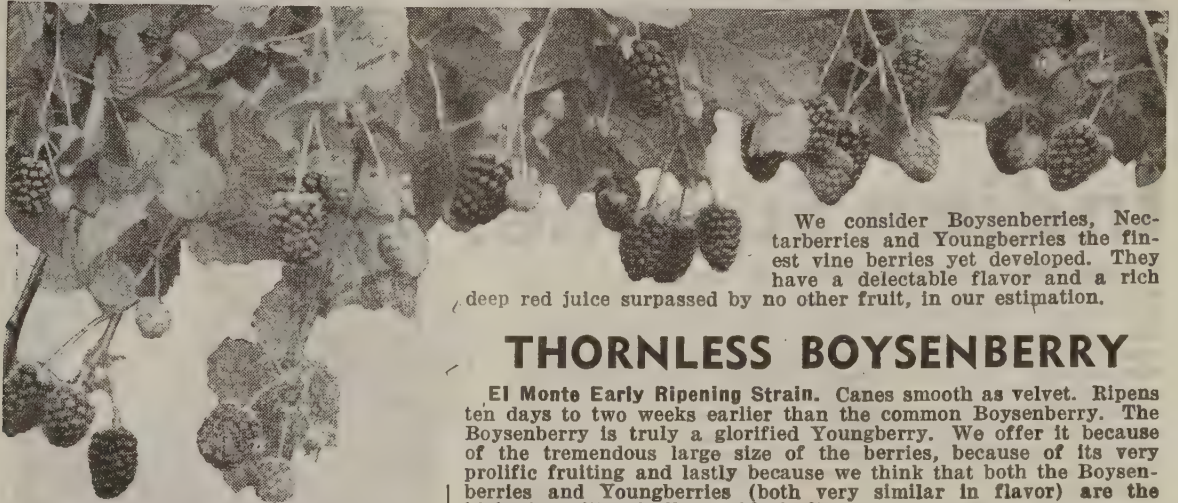
— All Twice Inspected State Certified Plants —

	Per	Postpaid			By Express Not Prepaid			
		12	25	50	100	250	500	1000
Ind. Summer (Everb.) .....	\$2.65	\$4.25	\$7.50	\$12.00	\$27.75	\$47.50	\$75.00	
Marcy (Red) .....								
Marion (L'g'st Purple) .....								
Chief (Red) .....	2.10	3.45	5.75	9.75	22.50	37.25	62.50	
Latham (Red) Newburgh (Red) .....								
Sodus (Purple) Sunrise (Early Red) .....								

Prices Bearing Age Raspberry Plants  
See Page 6.

# Thornless Boysenberries

Highest Quality of All Bramble Fruits



We consider Boysenberries, Nectarberries and Youngberries the finest vine berries yet developed. They have a delectable flavor and a rich deep red juice surpassed by no other fruit, in our estimation.

## THORNLESS BOYSENBERRY

**El Monte Early Ripening Strain.** Canes smooth as velvet. Ripens ten days to two weeks earlier than the common Boysenberry. The Boysenberry is truly a glorified Youngberry. We offer it because of the tremendous large size of the berries, because of its very prolific fruiting and lastly because we think that both the Boysenberries and Youngberries (both very similar in flavor) are the highest quality of all bramble fruits.

This thornless strain has retained all the good characters of its parent including its rugged, thrifty growth and hardiness. You can handle these canes with your bare hands and enjoy picking the large attractive fruits.

## NECTARBERRY

Richest flavor of all. Heavier yielding over a long period. Fruits average even larger than Boysenberries. Originated from the seed of a large Youngberry. Attention was attracted by its particularly large juice cells and the berries themselves, also, were the largest berries in the patch. When sampled, however, the next surprise came, for there was so much more "body" to the flavor, and more flavor, as it seemed, and although sweeter, appeared to carry with it so much of the tang of the raspberry that it was wondered if the bees had crossed the Youngberry from which it came, with the raspberries or blackberries in nearby rows. Genuine Nectarberry plants are not plentiful—yet our prices are very reasonable for a new variety with so many good qualities.

### Success with Boysenberries, Nectarberries and Youngberries

1. Very early spring planting is essential.
2. Use only heavy well grown plants and they prefer a rich moist well drained loam soil.
3. Set plants 4 to 6 ft. apart in 6 ft. rows.
4. Trellis after the first year or apply straw mulch under the trailing canes.
5. Clean cultivation until August.
6. Liberal spring applications of well rotted manure or Nitrogen fertilizer.
7. In states north of the Ohio River the canes will need to be placed on the ground and covered with straw or earth as protection during the cold weather. You will be well repaid for this extra protection.
8. Allow the fruits to fully ripen before picking to insure the highest quality.

The Youngberries start ripening their fruit soon after the Strawberry season and at a time when there are few other berries. The Nectarberries and Boysenberries follow later thus prolonging the season so that these marvelous berries can be enjoyed over quite a long season.

## Thornless Youngberry

Is a sport of the common type and is almost identical except that the canes are entirely thornless and smooth as velvet to handle with the bare hands. This, of course, is a decided advantage both when training and trimming canes and when picking the fruit. During the past severe winters the "Thornless" Youngberry has proven considerably harder than the common. Yield is very heavy—in fact a one-year plot test showed the Thornless type to outyield the common Youngberry by twenty per cent.



Boysenberries—Note the size—2 inches in length.

Price Boysenberries, Nectarberries, etc.	Postpaid			By Express Not Prepaid				
	Prices per	6	12	25	100	200	500	1000
Boysenberry, 1 yr. ....	\$1.45	\$2.35	\$3.80	\$10.00	\$18.75	\$36.50	\$65.00	
Bearing Age .....	2.25	3.45	5.50	15.00	28.25	54.75	95.00	
—Thornless, 1 yr. ....	1.55	2.60	4.00	12.00	22.50	39.85	72.50	
Bearing Age .....	3.05	4.85	8.25					
Nectarberry, 1 yr. ....	1.55	2.60	4.00	12.00	22.50	39.85	72.50	
Bearing Age .....	2.60	3.75	6.00	17.50				
Youngberry, 1 yr. ....	1.25	2.10	3.40	8.50	16.75	30.00	55.00	
Bearing Age .....	2.15	3.10	5.00	13.50				



**ALFRED—Mammoth New Blackberry—Practically Coreless**  
**Highest Quality—Large Jet Black Berries—Exceedingly Productive**

These are a few characteristics of the New Alfred Blackberry. This New Variety is taking first place in the plantings of the best commercial growers, producing larger crops of finer fruit than Eldorado, Blower and the other old reliable kinds.

For the Home Garden, Alfred is the ideal Blackberry. Think of a bush loaded with tremendously big jetty blackberries from 1½ to 1¾ inches long, practically free from seeds, coreless and with a pulp fairly bursting with juice. That's Alfred.

**Early Harvest** The earliest to ripen and the most productive of the early sorts. Scarff's Heavy Fruiting Strain Early Harvest.

**Eldorado** This is one of the most valuable varieties for market and home use. It is a strong, upright grower and the fruit is jet black, never coloring red after picking; fully as large again as the average Snyder berry. The flavor is excellent, imparting a rich aroma, melting and juicy with but little core.

**DEWBERRIES**

**Lucretia** The berries are far larger and incomparably better than any blackberry and of unequalled excellence; soft, sweet, and luscious throughout; of brightest glossy black color. Most desirable variety for Ohio conditions.

**Bearing Age Blackberries**

Heavy two-year-old plants can be supplied in all varieties at prices 50% higher than listed below for our one-year plants.

**BRAINERD BLACKBERRY**

**A New Tremendously Heavy Yielding Blackberry for the Central, Southern and Pacific Coast States**

A trailing type much hardier and better in all other respects than the Himalaya. Brainerd is extremely productive of very large clusters of high quality berries when fully ripe and which contain relatively smaller seeds than other blackberries of this type. The Department of Agriculture has made numerous tests of this variety and because of its greater hardiness and tremendous yields of large, highly-flavored berries has deemed it a very worth-white variety and worthy of introduction.

**Blackberry—Dewberry Prices**

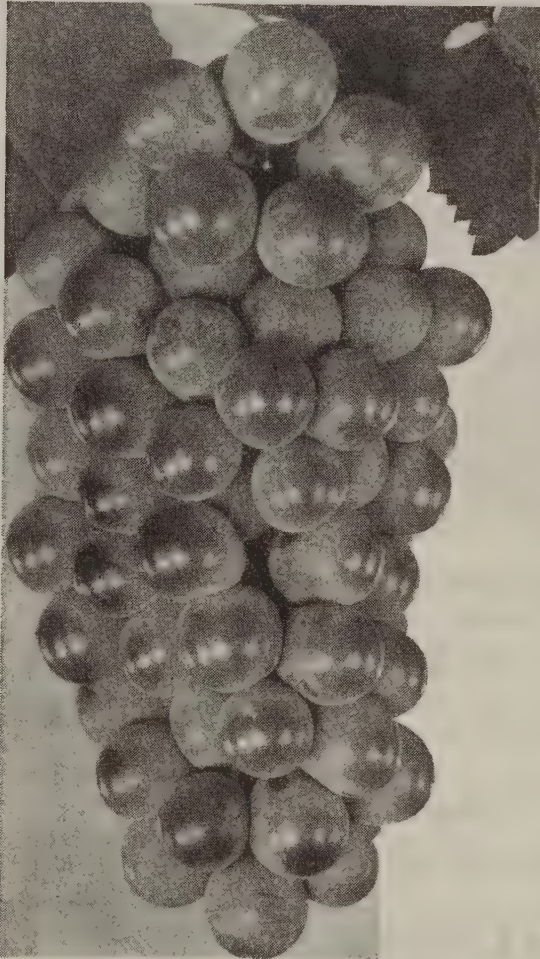
	Prices Per	Postpaid			By Express Not Prepaid			
		12	25	50	100	250	500	1000
Alfred.....								
Early Harvest.....								
Brainerd.....		2.75	3.85	6.85	11.50	26.50	50.00	75.00
Eldorado.....								
Lucretia Dewberry.....		2.00	3.25	5.65	9.35	20.50	37.50	60.00

**CULTURAL SUGGESTIONS**

Planting distances, pruning, and general culture same as for Red Raspberries (see page 8).  
 Keep suckers thinned out to not closer than 8 to 10 inches apart to insure ample space for fruiting canes and which will result in finer larger berries.  
 All bramble fruits profit by applications of commercial fertilizers containing plenty of Nitrogen, or well rotted manure in early Spring. Soils with plenty of humus are always best for Small Fruits.  
 Sulphur dusts during or just prior to early spring rains prevent leaf spot and are an aid in control of orange rust. Remove any plants showing disease and burn them immediately.

# GRAPES

**Growing Grapes** Set the vines deep enough to cover the main stem and in holes sufficiently large for the roots without crowding. 8 ft. apart each way is ample planting distance. Cut the tops back to 3 to 4 buds. Clean cultivation or mulch in the early part of the season. Good drainage, well rotted manure or Nitrogen fertilizers are most beneficial. Dusting Sulphur or Bordeaux mixture during rainy periods along with arsenate of lead during early summer will control mildews and berry moth. Trim your grape vines in December or January. One system of training the vines is described in our Booklet "Successful Planting" sent free with each order.



## Concord Seedless

**New—Hardy—Thrifty—Almost seedless.** Be the first in your community to have this sensational New Variety—fruit resembles the Standard and Concord in color and season of ripening. Clusters and berries are somewhat smaller and are almost **SEEDLESS**. The first real satisfactory Seedless Grape that can be grown here in our Northern and Eastern States. A fine Grape for table use, for pies and other culinary uses. Price: 1 yr. plants, 90c each, 3 for \$2.50, postpaid; 2 yr. plants, \$1.25 each, 3 for \$3.50, postpaid.

Every home should have a dozen or more grape vines planted on an arbor or along the garden fence. They are delicious to eat fresh from the vines; can be made into the most health-producing grape juice and jelly—well, who doesn't like grape jelly? Once planted, the grape vines will continue to yield for years with practically no special attention. Our grapes are strong, well-rooted plants that are sure to grow for you.

## PRICES OF GRAPES (Strong No. 1 Vines)

	Prices Per	Each	Postpaid		By Express	
			5	10	25	100
All Standard Varieties—2 yr. plants.....		\$.50	\$2.25	\$4.00	\$7.50	\$20.00
1 yr. plants.....		.40	1.75	3.00	4.50	12.50
Concord Seedless—2 yr. plants.....		1.25	5.75	9.00		
1 yr. plants.....		.90	4.00	7.00		

## Four New Grapes of Merit

These new varieties (with the exception of Caco) are recent introductions of the N. Y. Experiment Station and all surpass the older standard kinds in both fruit and vine characteristics.

**Caco** (New Red Grape.) A variety of exceptional merit and should be in every collection planted, is the most beautiful of the hardy grapes, the bunches are large, well shouldered, color wine red with abundant bloom. Bunches are compact and of good size and form. Earlier than Concord and is sweet and palatable several weeks before it is fully ripe. Caco is beyond doubt one of the best of our native red grapes.

**Portland** (White.) The earliest of all grapes. Large bunch and berry; flesh sweet, juicy, and of fine flavor. A valuable early grape for home gardens, and bids fair to hold first place as an early market variety. The vine of Portland is particularly satisfactory as it is vigorous, productive, hardy and healthy.

**Sheridan** Black, larger bunch and berry and the best variety to follow Concord. Good quality. Dr. U. P. Hedrich, of New York Station, says: "Sheridan is probably the most valuable New Grape and is sent out with the expectation that it will supplement the Concord which it surpasses in vine and fruit characteristics in many regions."

**Fredonia** The finest early grape. Fredonia ripens with the earliest. Bunch and berries large. Skin firm. Flavor of the best. It fills a long-felt need for an early TABLE GRAPE of high quality that would make a real appetizing appearance in our fruit markets. It does not crack. Commercial growers will find this grape a money-maker. One of America's best red juice varieties.

## Standard Varieties



**Concord** (Blue.) An old variety; does well wherever planted; good size; productive.

**Catawba** (Red.) One of the best commercial grapes in cultivation. Bunch large and compact; a strong grower and very productive; quality good.

**Niagara** (White.) The most popular white grape in existence. Fruit large and very productive; a good grower, ripening same season as Concord, equally good, valuable in every way.

**Worden** A large blue grape of very high quality ripening a week to 10 days earlier than Concord. Very popular for both commercial planting and the home vineyard.

## Special Collection NEW GRAPES

1 each Caco, Portland, Fredonia, Sheridan and Concord Seedless, \$2.85, postpaid. 3 each (15 strong vines), \$7.75 postpaid.



# New Red Lake Currant

**Finest of all Red Currants—Large Berries—Excellent Quality—Long Well-Filled Clusters of Cherry Red Fruits**

The leading Red Currant for both home and commercial growers. The berry is unusually large in size and of superior quality; the clusters are long and filled out to the top and with stems sufficiently long to make picking easy. The large berries are borne on long, well-filled, long-stemmed clusters that are easily picked. Color is a clear light red and the quality excellent. The bush is vigorous, upright, and productive. We recommend Red Lake as the world's best Red Currant.

## CULTURAL DIRECTIONS FOR CURRANTS AND GOOSEBERRIES

1. Plant in the Fall or very early Spring 3 feet apart in the row.
2. Both Currants and Gooseberries prefer a cool rich moist loam soil with abundant moisture.
3. Maintain vigorous growth and keep the older 3 and 4 year old wood trimmed out.
4. Spray with sulphur for leaf diseases and use arsenate of lead to control the worms on leaves.

**Wilder** A remarkable variety; one of the strongest growers and most productive. Bunch and berry large, bright, attractive red color, even when dead ripe; hangs on bushes in fine condition for handling as late as any known variety.

## White Grape Currant

A novelty of good substantial economic value as the bushes are strong growers and produce heavy crops of delicious, delicate, transparent colored fruit. Price, 75c each; \$6.00 per 10 postpaid.

## Important—WHEN ORDERING

CURRANTS or GOOSEBERRY plants it is necessary for us to have the following information:

1. County and Township where planting is to be made.
2. Approximate distance from nearest White Pine (Five-needled Pine).

## PRICES—Currants and Gooseberries, 2-year plants

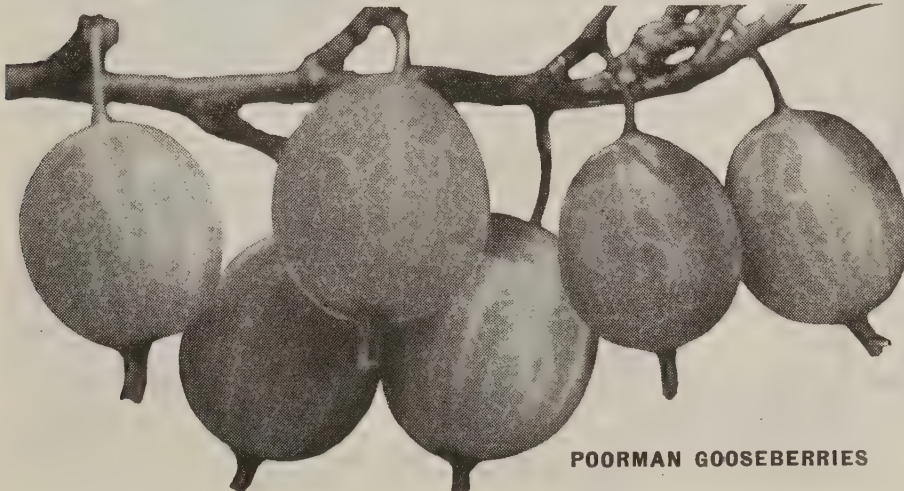
Prices per	Postpaid			By Express	
	Each	10	25	Not Prepaid	100 500
Red Lake Currant—2 yr. ....	\$0.75	\$5.00	\$ 8.95	\$25.00	\$100.00
1 yr. plants .....	.55	3.85	7.50	20.00	75.00
Wilder Currant—2 yr. ....	.65	4.00	7.50	20.00	75.00
1 yr. plants .....	.45	3.25	6.50	15.00	65.00
Poorman Gooseberry—2 yr. ....	.85	7.50	15.00	40.00	
Downing Gooseberry—2 yr. ....	.75	6.00	12.50	35.00	175.00



RED LAKE

## GOOSEBERRIES

Write for Special Prices on Currants and Gooseberries for Commercial Plantings



POORMAN GOOSEBERRIES

**Downing** A large, handsome fruit, green in color; fine flavor; immense cropper and always in demand; an American variety, free from mildew.

**Poorman** The fruit of the Poorman is the largest of any of the American Gooseberries. The berries are of a good red color and are splendid eaten out of the hand. It also produces one of the largest, healthiest, and hardiest bushes of any worthwhile variety. Well adapted to all except very light, sandy soil

# Dwarf Trees

**Solve the Problem of Fruit Growing in Small Areas**

**Very Ornamental for the Yard and Garden**

Dwarf Fruit Trees are so well adapted to planting in the yard, garden or wherever the space is limited. They come into bearing in two or three years after planting if well cared for and the fruit produced by these trees is same size and quality as produced by standard trees.

● **All Dwarf Trees are approximately 3 to 4 ft. in height and by express** ●

**Dwarf Apple** Transparent, Lodi, Wealthy, Red Gravenstein, McIntosh, Jonathan, Red Delicious, Golden Delicious, Stamens Winesap, Dolga Crab. Price, Dwarf Apple: \$3.00 each, \$30.00 per 10.

**Dwarf Pear** Bartlett, Seckel, Duchess. Price, Dwarf Pear, \$3.00 each, \$30.00 per 10.

**Rochester Peach** Although on standard roots, Rochester is a small shapely round headed tree and fortunately one of the hardiest. Fruit is large yellow freestone delicious rich Peach flavor. A fine lawn tree. Price \$1.50 each.

**Oka Cherry** A new plum-cherry creation of the Sand Cherry type, produced by Prof. Hansen, of South Dakota. Begins to bear on two-year trees. Trees are dwarf in growth and bear an abundance of fruit—immense round cherries, a full inch in diameter—dark red in color, purple juicy meat and wonderfully sweet. Should be planted along with Brooks Bush Cherry (see page 16) for proper pollination. Price Oka, 4-5 ft., \$1.85 each; 3 for \$5.40.

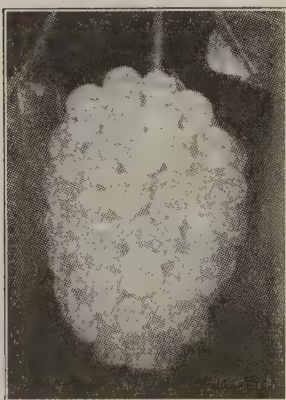
**Nanking Cherry** (*Prunus Tomentosa*.) A beautiful dwarf tree or shrub attaining a height of 6 to 8 feet. The striking white flowers in very early Spring and later the ropes of cherry fruits make this a most desirable plant. Plant three trees to insure pollination. Price, Bearing Age, 2-3 ft. plants, \$1.00 each; 3 for \$2.50. (See page 22.)



## Novelty Fruits

Different from ordinary fruits, and should be planted by everyone loving rare specimens. Plant in a small way as Novelties and they will surprise and well repay you.

**All Novelty Fruits Postpaid Unless Otherwise Noted**



**Wineberry** Growth similar to the Raspberries. Fruit in large clusters, wine colored. Price, 35c each; \$3.00 per dozen, postpaid.

**Am. Cranberrybush** Selections of the high bush type of the Am. cranberries propagated because of their large and heavy fruiting characters and quality. A most ornamental fruiting shrub. (See bottom page 22.) Price 90c each, 3 for \$2.50, postpaid.

**Nectarberry** The glorified Boysenberry. The finest of quality fruits. Hardy and most productive of its class. Price, 35c each; 6 for \$1.55, postpaid. See page 10 for more complete description of the Nectarberry.

### Strawberry-Raspberry (Tree Strawberry)

Bushes two feet high, covered with red berries, very productive and a distinct novelty in small fruits. Price 30c each.

### \$2.15 Novelty Fruit Collection

We will send postpaid one plant each of the following varieties: Strawberry-Raspberry, Wineberry, Nectarberry, Crystal White Blackberry, Juneberry, and Golden Queen Raspberry, all for \$2.15; 3 each for \$5.95; 12 each for \$18.00.



**Juneberry** Plants quite bushy and ornamental, with clusters of red berries becoming dark blue when ripe. Price, 75c each; 3 for \$2.00.

### White Grape Currant

This is an "Albino" Currant with all of the high quality and heavy fruiting of the standard commercial varieties. Price, 75c each.

**IMPORTANT**—See page 13 for information necessary to enclose when ordering Currants and Gooseberries.

### A True "White" Blackberry

Price, 35c each; 5 for \$1.60 postpaid.

### Golden Queen Yellow Raspberry

Price, 35c each; 5 for \$1.60 postpaid.

### Blueberries

Price, 3 for \$3.25 See page 4.

# APPLE *Scarff's List of Good Dependable Varieties Selected for Quality, Productivity and Dependability*

PROPAGATED FROM BUDS TAKEN FROM OUR OWN BEARING ORCHARDS

**Lodi** A large waxen yellow apple of the Transparent type. The color is the clear attractive yellow of the Transparent. Because of their size they may be picked for market or culinary use at the same

time as Transparent, but are at their best if allowed to hang a week or ten days later. Commercial growers are planting Lodi in preference to the Transparent.



LODI is much larger than Transparent and equal to it in other characteristics.

## Summer Varieties

Transparent, Lodi, Red Duchess, Benoni, Wealthy, Maiden Blush, Summer Rambo, Jefferis, Milton.

## Early Winter Varieties

Grimes Golden, Jonathan, McIntosh, Red Spy, Baldwin, Double Red Delicious, Yellow Delicious, Dr. Mathews, Kendall, New Red Jonathan, Sweet Delicious, Winter Banana.

## Late Winter Varieties

Miami Red, Rome, Gallia Beauty, Double Red Stamens, Turley Winesap.

## Price Apple Trees

All heavy 2 yr. old trees branched and well rooted.

By Express Collect	Each rate	25	100
2 yr. standard, 4-6 ft. ....	\$1.50	\$1.25	\$0.90

## Scarff's Miami

**Double Sport—Color and Quality**

**Better Color—Finer Texture—Higher Quality.** The fruiting trees which we have are identical to Stark—vigorous, thrifty and heavy producers. The fruit is above medium to large; color solid pinkish bronze to bright red and flesh is crisp, juicy, better quality and finer texture than Stark. Excellent for culinary use. **MIAMI** is a high quality eating apple, crisp, juicy and having a rich yellowish flesh when ripe. They are good to eat soon after picking but develop their best quality in mid-winter and keep in good common storage until spring.

### PLANTING DISTANCES

Apple, Standard .....	40 ft.
(Filler trees may be planted between the permanent Apple and these can usually stand for 12 to 15 years.)	
Pear, Standard .....	20 ft.
Dwarf Fruit Trees .....	15 to 20 ft.
Cherry .....	20 ft.
Plum .....	20 ft.
Peach (Apricot and Nectarine) .....	20 ft.
Quince .....	12 ft.

## Fruit Trees are Easy to Grow

Planting and cultural directions with spray schedules for all fruit trees are included in our 16-page "Successful Planting" Booklet mailed free with each order.

To insure success in planting fruit trees, be sure to cut the tops back as instructed. Use a gallon of wet Peat Moss mixed with the soil in the hole when planting. **Price, Peat Moss per bag of approximately 1 bushel, \$1.00 each; 10 bags, \$8.50.**

**Planting season**—Most all fruit trees may be transplanted satisfactorily in either early Spring or late Fall.



Fiery Red Dolgo Crabs Produced in Clusters as Profusely as Cherries.

**Dolgo Crab** Fruit fiery red and hangs on the tree long after ripe—making it exceedingly ornamental as well as valuable for making jellies. We can recommend it as one of the finest and most beautiful crabs grown.

**Hyslop Crab** Best late fruiting crab.

# • Montmorency Cherry •



**HEAVY FRUITING—WIDELY ADAPTED**  
**Bears Three Years After Planting**

We consider the Montmorency the most dependable and the best all-around cherry for general planting in the Midwestern States. This is the Cherry for canning, pies, preserves and many other culinary uses.

## • New Bush Cherries •

Attractive dual purpose shrubs, 3 to 4 ft. high, producing excellent cherries of highly practical value and apparently quite free from serious insect and disease injury. Plant more than one variety to insure proper pollination.

**Brooks** Pollenizer for Oka, and a wonderfully fine bush cherry in itself. They are budded plants which will produce very high quality dark red fruits as attractive and almost as large as those of Oka. Brooks is truly an aristocrat of the Ornamental Fruits.

**Black Beauty** This is the newest selection of the Bush Cherries. Offered because of its high quality and large very dark

**glossy fruits** — almost black. The flesh is dark red from the skin to the pit. You will be proud of the "Black Beauties" in your Ornamental Garden.



**Nanking Bush Cherry**  
 See page 22 for description

## • Standard Cherries •

**Early Richmond** Best early variety for pies and canning.

**Montmorency** Best all around cherry for home use and commercial planting. It is widely adapted, quite regular and heavy fruiting. This is the variety most suited for canning, pies and preserves.

## • Sweet Cherries •

**Early Seneca** (Sweet) Its fruits ripen in the first weeks of June, more than 2 weeks earlier than Black Tartarian, the standard early cherry. The cherries are purple-black, with juicy, melting flesh, and a rich sweet flavor. The pit is free and the skin does not crack. The tree is very vigorous and productive.

**Black Tartarian** (Sweet.) Most dependable of the standard large dark red sweet cherries.

**Windsor** (Sweet.) Should be included as a pollenizer in all Sweet Cherry plantings. Large, dark red, excellent quality and free from rot. Trees hardy, thrifty and not particular to soil requirements.

**Royal Anne** (Sweet.) Ranks first for canning by virtue of its rich colored fruits of highest quality.

**Oka Cherry** (Sweet.) Small compact tree of the Sand Cherry type. Bears an abundance of large round cherries fully an inch in diameter. Dark red outside and with purple juicy flesh, wonderfully sweet. For best fruiting along with Brooks Bush Cherry as a pollenizer Oka is the finest low dwarf Ornamental fruiting tree we know.

## Mandan Golden

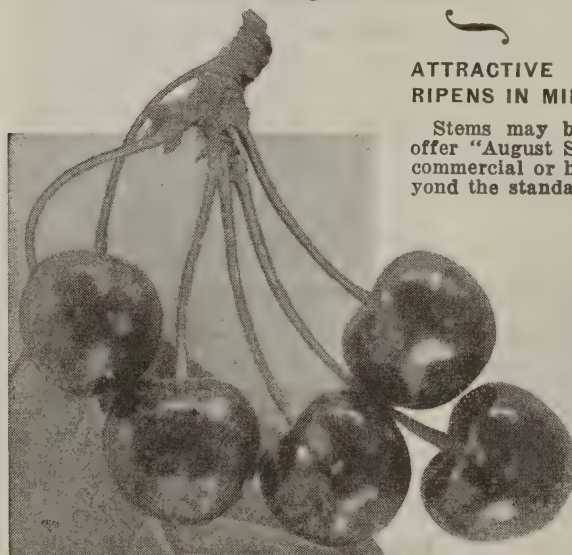
New Bush Cherry of beautiful golden amber color and of the same high quality as Brooks and Black Beauty.

Please do not confuse the **BROOKS, BLACK BEAUTY** and **MANDAN GOLDEN** with the common Sand Cherries often offered at considerably lower prices and which are disappointing in quality.

## "August Supreme"

**ATTRACTIVE DARK RED SWEET CHERRIES—HIGHEST QUALITY**  
**RIPENS IN MID-AUGUST WITH NO OTHER VARIETIES COMPETING**

Stems may be pulled from the cherries without loss of juice. We offer "August Supreme" to our customers as a quality Sweet Cherry for commercial or home planting, and to extend the Sweet Cherry season beyond the standard varieties and up until "Sweet September" ripens. The Cherries are medium large, dark red, and with flesh red to the pit. Quality is very fine for eating fresh or for culinary purposes. The tree itself is vigorous and productive. Plant Patent No. 164. August Supreme and Sweet September were both found and patented by Menno Gerber.



**August Supreme**

### Cherry Tree Prices

	By Express F.O.B.	Each	10 Rate	25 up
<b>Sweet &amp; Standard Cherries</b>				
Select 4-5 ft. trees .....		\$1.75	\$1.50	\$1.25
<b>New Bush Cherries</b>				
2 yr., 2-3 ft. plants .....		1.25	1.10	
<b>Nanking Cherries</b>				
2 yr., 2-3 ft. ....		1.00	(3 for \$2.00)	
August Supreme, 5 ft. trees..		2.25	(3 for \$6.00)	

# Peaches . . .

*Scarff's List of  
Best Peach Varieties*

## • White Peaches •

**Cumberland** Hardest and best of the early white peaches. Large size free stone.

**Champion** The standard midseason white peach.

**Belle of Georgia** Most dependable white peach to follow Champion.



## • Yellow Peaches •

**Red Haven** Earliest good yellow peach. Color bright red. Quality excellent.

**Golden Jubilee** Now the standard early yellow peach, ripens 3 weeks before Elberta.

**Rochester** One of the hardest yellow peaches. Early. Medium size.

**Hale Haven** A new high quality medium early variety from Michigan Yellow freestone. Quite hardy. We consider Hale Haven the most desirable all-around variety for both home and commercial planting. This is truly a top-notch peach.

**Shippers Big Red** (Late Red.) More desirable than Elberta in every respect—better color, quality, yield and tree characteristics. A mighty fine peach.

**Elberta** The standard midseason yellow peach.

## Factors Influencing the Early Bearing of Fruit Trees

1. Plant well-grown trees from a reputable nurseryman.
2. Avoid planting in poorly-drained soils. No fruit trees will tolerate "Wet Feet." Usually upland clay, sand or gravelly loams are preferable to the so-called black and lowland types of soil.
3. Set out varieties adapted to your section of the country. In most cases we have indicated the limitation of certain varieties which are not widely adapted.
4. Use an abundance of peat moss mixed with the soil when planting in well-drained soils.
5. Select varieties which normally come into bearing at an early age such as Wealthy Apples, Hale Haven Peaches, Stanley Plums and Oka Cherries, etc.
6. Most fruit trees require several varieties planted together for proper pollinization. This will insure heavier fruiting.
7. For the first three or four years stimulate the tree growth as much as possible with good cultural methods and the use of nitrogen fertilizers in very early Spring (cease cultivation, etc., in late July so trees will mature growth well before winter.)
8. At this stage it may be well to slow up the tree growth for a few years in order to throw it into fruit production. This restricted growth is the reason dwarf fruit trees come into bearing before the standard kinds.
9. Keep your trees healthy with timely sprays (see our "Successful Planting" booklet for spray schedules.)

### Peach Tree Prices

Thrifty Ohio grown trees—Buds from our own bearing orchards.  
All varieties

	(By Express Collect)		
	Each	25 Rate	50 Rate
Selec 4-5 ft. trees .....	\$1.50	\$1.20	\$0.90

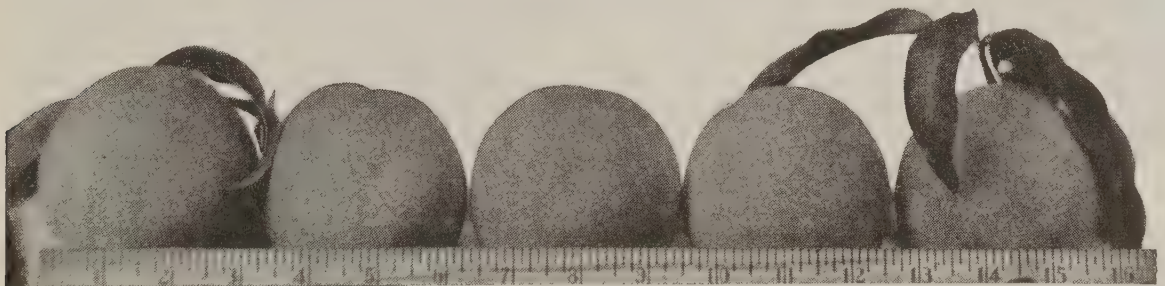
**Peach Leaf Curl** is easily controlled by spraying in late fall after all leaves have dropped and temperature above 40. Use Dry Lime Sulphur at the rate of 5 pounds to 25 gallons of water.

To insure success in planting fruit trees be sure to cut the tops back as instructed. Use a gallon of wet Peat Moss mixed with the soil in the hole when planting. Price, Peat Moss per bag of approximately 1 bushel, \$1.00 each.

**APRICOTS—See page 21**

Miss Mable A. George June 20, 1947 Michigan

Gentlemen: I want you to know that everything about my shipment of nursery stock was perfect. It came through quickly too—shipped May 16 and arrived May 19th. The Pink Dogwood and Golden Rain trees were the finest specimens I have ever seen. Just wanted you to know, as such perfection is rare these days and indicates a superior business system.



## Quette Nectarine

Hardy as a peach, a delicious sweet flavor, smooth skin and with striking red color. Our pickers call this the "Fuzzless Peach"—and do they like them. Price, \$2.00 each, 3 for \$5.25.

## Special Notice

When order includes Nursery items priced in Catalog as "Prepaid" and others "Express Collect," the entire order will be sent "Express Collect." In this case you may deduct 5% from the "Postpaid" prices when remitting.

# • NEW SEEDLESS PEAR •



## Quality Comparable to Bartlett Practically Seedless and Coreless

Cope's New Seedless Pear has all the qualities one can ask for in a Pear—Hardiness, beauty, size, quality, a great producer and apparently quite resistant to Blight.

### Bears at an Early Age. Full Crop at Five Years

We often find something new in the fruit line, but seldom do we find something better. We feel that a great discovery has been made in this new Seedless and Coreless Pear. It resembles Bartlett in many ways and in color it has that beautiful yellow of the Bartlett tinged with bright pink. The original tree began producing at three years old and at five years produced three bushels of perfect fruit. Another great point in favor of this variety is that it ripens ten days after Bartlett, a season in which no other good varieties are on the market. It ripens evenly, no softening at the center.

### Description

Size: Same as Bartlett to a shade larger. Color: Same as Bartlett except pink on cheeks similar to Banana Apple. Quality: Good. Fruit keeps 2 to 3 weeks in common storage. Over 90% of fruits free from seeds and a large percent showing no signs of core. Tree is a vigorous grower and so far has shown no signs of blight.

### Cultural Directions For All Fruit Trees

1. Plant all fruit trees about two inches deeper than they stood in the Nursery row (except Dwarf Apple and Pear which should be set the same depth).
2. Dig holes plenty wide enough to spread the roots, using the good top soil and peat mixed and firmed well around the roots.
3. Fill the holes three fourths full, firm well and then put at least a bucket of water in and allow to soak down. Fill the hole with loose soil and add a little more water and a mulch of peat moss over the top around the tree.
4. Be sure to trim the tops back as indicated in our planting guide. (In Fall planting delay the cutting until early Spring.)
5. You will insure a good start for your trees Spring or Fall (and emphatically the latter) by wrapping the trunks and well over the tops with coarse paper or light burlap. As the buds start growth remove the wrapping from tops. The trunks may be protected longer if desired.

### Prices of Pear Trees

Standard Varieties	Each	10 rate
Select 2 yr., 5-6 ft. ....	\$1.75	\$1.50

Cope's New Seedless Pear		
Heavy 4-5 ft. ....	2.25	2.00
Only a very limited number of trees available this year.		

Orange Quince		
Strong 4-5 ft. trees .....	2.00	1.75
All Fruit Trees by Express Not Prepaid		

If you have difficulty growing good fruits of the Quince, try bagging each fruit individually in 2-lb. paper bags, as protection against Oriental Moth.

Dwarf Pears—See page 14

## Standard Pears

**Gorham** Is of the Bartlett type, with the same high quality and attractive appearance. Ripens two weeks later than Bartlett and keeps a month longer. Flavor is sweet and with a pleasing aroma. Flesh is white, tender, buttery, and juicy—a combination which, with the rich flavor and spicy aroma makes this one of the very best flavored pears of its season. Canners find it superior to Bartlett.

**Bartlett** The standard of excellence in pear varieties. One of the most popular and should be included in all plantings.

**Bosc** This is one of the highest in quality of all pears. Fruit large rich yellow overspread with cinnamon russet. Flesh tender, melting and juicy. Ripens late October.

**Duchess** Very large, buttery—a fine canner.

**Kieffer** One of the most dependable winter pears. Bears very young. Fruit large and keeps until Christmas.

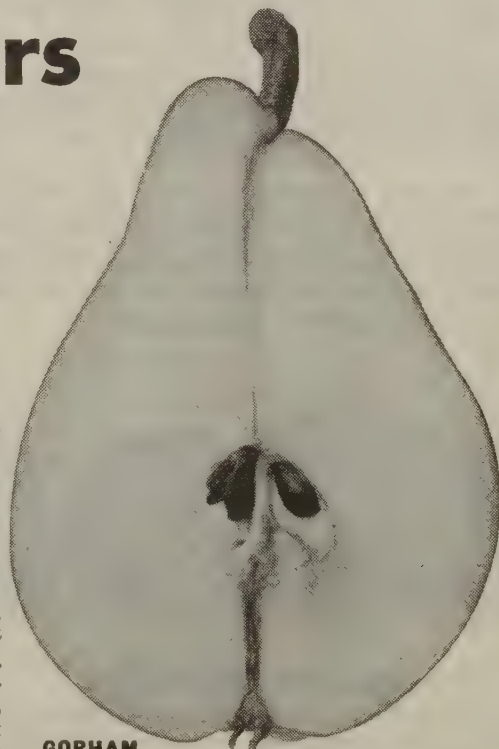
**Seckel** Best for pickling, highest quality, medium size.

### Planting and Cultural Directions

With spray schedules for all fruit trees are included in our 16-page "Successful Planting" Booklet mailed free with each order.

Fruit trees must not be neglected after planting. Provide a mulch around the tree or keep the soil well cultivated to prevent excessive drying out.

After pruning of all fruit trees should be with the aim of forming a symmetrical top, with an even distribution of branches; then thin out water sprouts and branches so as to allow plenty of air and sunlight into the tree; to cut back lateral branches only enough to keep them from becoming too whippy and to top the leaders of the trees so that they may not become too tall. In case of Peach trees considerably more annual pruning is done on all branches to prevent the tree from setting more fruit than it can properly bring to maturity.



**GORHAM**  
A Blight Resistant Pear to Follow Bartlett

# Scarff's Delicious Plums

Price all Plum Trees unless otherwise noted, by express not prepaid. } Select 4-5 ft. Trees. \$1.85 each; 10 rate \$1.75; 25 rate \$1.60.

There is a greater interest in plums now than for many years and the reason is because there are so many new high quality varieties now available. There is no finer fruit to eat when picked dead ripe from the tree, and the housewife knows a hundred ways to cook them—from plum pudding down to preserves and jellies.

**Bradshaw** Very large fruit; dark red; flesh inclined to yellowish-green.

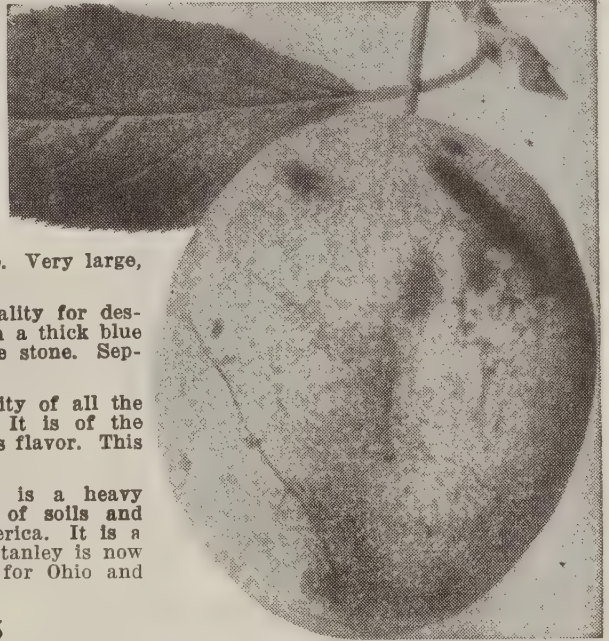
**Damson** Everyone is familiar with the old-fashioned Damson plums and there is always a good demand for them.

**Reine Claude** Best of the Green Gage type. Very large, greenish; fine flavor.

**Italian Prune** A valuable plum of fair quality for desert. Long, oval, purple with a thick blue bloom; flesh firm and pleasant, separating from the stone. September.

**Imperial Epineuse** Is the highest quality of all the Old World plums. It is of the prune type, reddish purple, sweet, juicy and delicious flavor. This is the plum of plums for the garden.

**Stanley** Comes into bearing very early. It is a heavy producer, adapted to a wide range of soils and has been favorably reported from all parts of America. It is a fine blue plum of medium size and high quality. Stanley is now rated at the top of the list of Commercial Plums for Ohio and other Central States.



All fruit trees, and especially Plum, Peach, and Cherry thrive best in good loose loam, or sandy loam, well-drained soils. If your particular location is inclined to be the wet, heavy type of soil, try to remedy with tile drainage. It may also help to mix some sand or gravel with the soil around the roots. Also, this is one condition where Peat Moss is not recommended as it would hold additional moisture and react detrimentally.

## Fresh Home-Grown Fruits Best for Freezing

Highest quality in quick-frozen fruits is obtained only when they can be grown under the best conditions, fully ripened on the vine to the very peak of color and quality. When this stage is reached, pick, prepare, and freeze promptly.

The Home Fruit Garden provides the ideal condition for the fruit to be so handled from the vine (or tree) to the deep freeze in the minimum of time.

## BEST FRUIT Varieties for Freezing

**STRAWBERRIES**—Dunlap, Premier, Sparkle, Streamliner, New Robinson

**BLUEBERRIES**—Rubel, Jersey, Rancocas

**YOUNGBERRY** and **BOYSENBERRY** (both)

**CURRENTS**—Red Lake

**GOOSEBERRY**—Poorman

**RED RASPBERRY**—Taylor, Newburgh, Latham

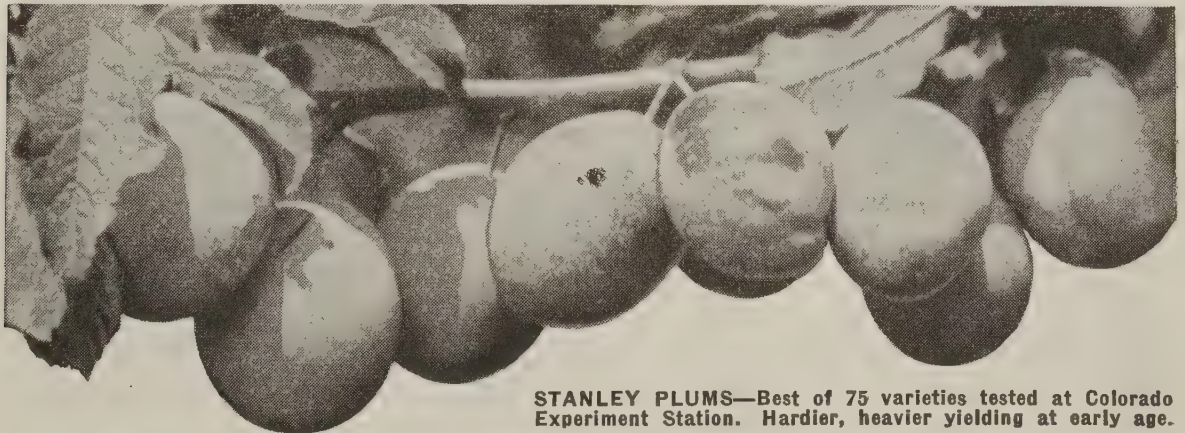
**PURPLE RASPBERRY**—Sodus, Marion

**BLACK RASPBERRY**—Bristol, Cumberland

**BLACKBERRIES**—Early Harvest, Eldorado

**CHERRIES**—Montmorency, Windsor (Sweet)

**PEACHES**—Red Haven, Hale Haven, Shippers Red



**STANLEY PLUMS**—Best of 75 varieties tested at Colorado Experiment Station. Hardier, heavier yielding at early age.

Planting and cultural directions with Spray schedules for all fruit trees are included in our 16-page "Successful Planting" booklet mailed free with each order.

To insure success in planting fruit trees be sure to cut the tops back as instructed. Use a gallon of wet Peat Moss mixed with the soil in the hole when planting. We are furnishing our customers a high grade of Native Acid Horticultural Peat Moss in bags of approximately one bushel for \$1.00 each. You will find Peat Moss a good investment.

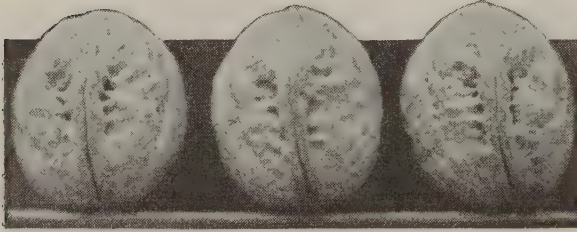
# • Hardy Nut Trees •

Perfectly Hardy in Our Northern States—Large Size and Heavy Yielding Varieties

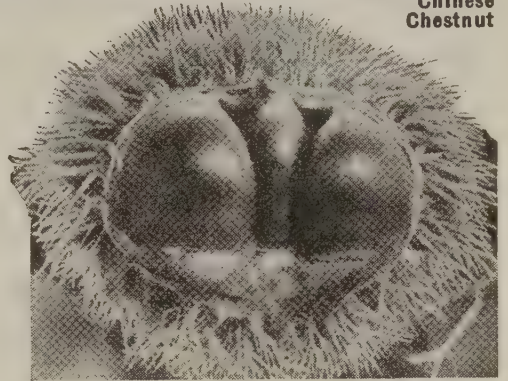
## Extra Special NEW CRATH WALNUT

These Persian Nuts are most highly prized of all for north temperate zone. On trial over a wide range, fruited satisfactorily and found perfectly hardy as far north as Ottawa. Good bearers of excellent nuts and apparently self-fertile. Beautiful ornamental lawn tree and valuable both for the nuts and timber.

Chinese Chestnut



New Crath (Carpathian) Walnut  
Parent Stock Hardy at 40° Below Zero.



**Crax-ezy Butternut** This extremely hardy, heavy-producing tree originated in Michigan. The nut has a thin shell (can be cracked with knife point). The eating quality is excellent.

**Chinese Chestnut** Introduced by the U. S. Dept. of Agriculture as the most blight resistant species. Nuts larger than the American Chestnut and are equally sweet and good. The Chinese Chestnut is a coming commercial orchard tree—not a fast grower but bushy and low, making harvesting easy. Often bear when the trees are only 3 or 4 feet tall. Very ornamental trees. Plant several trees for best pollenization.

## Jones Hybrid Hazel Nut

This new strain of Filbert combines the hardiness of the American Hazel with the reliable fruiting quality of the European Filbert. The nuts are large and excellent quality. We recommend this Hybrid Hazel for those who want quick fruiting and plants that do not take up as much room. This year we offer first generation seedlings of the Jones variety. They are thrifty growing plants, hardy and prolific bearing plants. When our supply of Jones Filberts is exhausted we can supply a limited number of other named, large fruiting varieties, in 2 to 3 ft. size at the same price.

**Native Shellbark Hickory.** These are select native trees— not grafted varieties, 3-4 ft., \$2.75 each.

**HEART NUT**  
Root-pruned when potted for grafting—will outdistance larger trees due to an already well-established root system. Grafted and will come true to name.



## Thomas Walnut

Thin Shelled—Excellent Cracking Quality

One of the finest of the new improved Black Walnuts. The individual nuts and kernels are large, light colored and of very good quality. The tree is a very fast grower and early bearing. All Black Walnut trees are valuable for both the nuts and timber.

**Hardy Pecans** The GREEN RIVER and BUSSERON varieties are northern Pecans, hardy as the Hickories and thrive on a wide range of soils. Trees are tall, upright and highly desirable for lawn planting. The nuts, although not quite as large as southern varieties, are good sized and true paper shell.

## Planting and Culture

1. Dig holes wide and deep enough to set the trees several inches below the crown.
2. Plant when soil is mellow (not wet) and firm the loose dirt well around the roots.
3. A gallon of moist peat moss mixed with the dirt around the roots is good insurance and will stimulate growth.
4. When planting trim off about one-third of the previous season's growth.
5. Mulching around the trees with loose straw manure is beneficial. Spade in this mulch each Spring.
6. Keep foliage dusted with sulphur to prevent leaf spot.



Heart Nuts

## Prices—Hardy Nut Trees

Grafted and Budded Varieties unless otherwise noted.	Each	
	By Express	Not Prepaid
	18-24 in. 2-3 ft. 3-4 ft.	
Native Shellbark Hickory (Not budded) .....		\$2.75
Thomas Black Walnut .....	\$2.50	3.25
Hybrid Hazel Nuts (4-5 ft. \$4.00) .....	3.00	3.50
Chinese Chestnuts (Not Grafted) .....	\$1.50	2.00 2.50
Crath (Carpathian) Walnut .....		3.00 3.50
Crax-ezy Butternut .....		4.00 5.00
Heart Nut .....	4.50	
Hardy Pecans and Hicans .....	3.00	4.00

Unless otherwise noted, these are budded and grafted varieties—the very finest—large meats, excellent flavor and have proven hardy to withstand our Northern climate. Please do not confuse them with the common seedling trees which are so often offered at a much lower price.

**Hicans** The PLEAS and GERARDI varieties are natural crosses between Pecans and Hickories. The trees are rapid growers and are quite ornamental. Hicans will succeed under neglect where most trees fail. The nuts are large, long; an excellent cracker with very high quality meat.



# Apricots - - - Persimmons

## Both High Quality Fruits Should be More Generally Planted

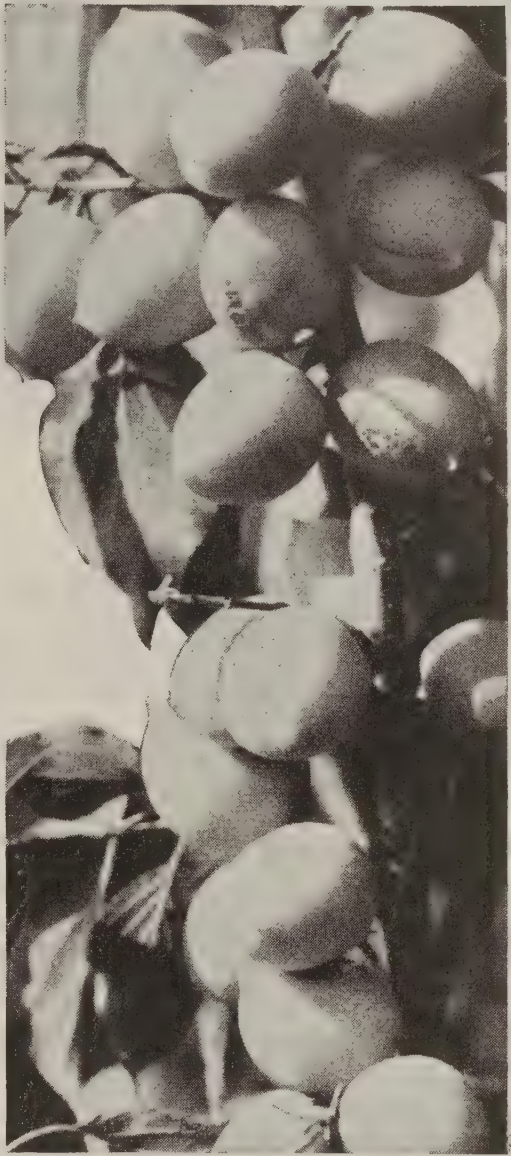
The demand for canned Apricots has reached an all-time high during the period of war food rationing. Very few fruits have such delectable flavor either when eaten fresh from the tree or canned and served for dessert. The limitation of Apricot plantings is hardness. In very early Spring the trees are masses of pinkish-white blossoms, most ornamental in themselves, but very often injured by the Spring frosts. In home plantings the trees are more protected and the crops they do produce are well worth the space they occupy. These two varieties of Apricots represent the most satisfactory types for general planting where hardiness and quality are both considered.

**Moorpark** An old English variety and is probably the most widely grown of all Apricots. The fruits are of the largest size, handsome appearance and have long been the standard of excellence in both appearance and quality. Color orange yellow with a distinct blush on the side next to the sun and flecked with reddish dots. The flesh is firm, sweet, juicy, and of highest quality. Moorpark is not quite as hardy as Hungarian but the fruits are somewhat superior.

**Manchurian** This group of Apricots differs somewhat from the varieties commonly grown. They were introduced into the U. S. from Northern China because of their extreme hardiness and ornamental nature of the trees. This year we are offering strong 2 yr., 4-5 ft. trees of first generation seedlings of the Manchurian variety. The fruits will vary somewhat from these trees but we believe it well worth planting for trial and especially because of its hardiness.

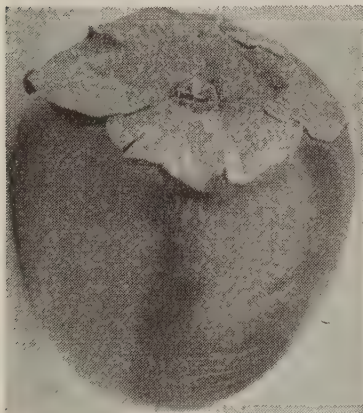
PRICE OF APRICOTS		
Price of Apricots, Nectarines, and Persimmons		
	Each	3 Rate
Apricots, 4-5 ft. trees .....	\$2.00	\$1.75
Quette Nectarine, 4-5 ft. trees .....	2.00	1.75
Persimmons, Miller and Lambert		
3-4 ft. trees .....	2.10	2.00
4-5 ft. trees .....	2.60	2.50

Planting and Cultural Directions for Apricots are the same as for Peach Trees. Cut the top and side branches back one-half to one-third their length when planting. Dig the holes when the ground works mellow—never when ground is wet—and it will well repay you to mix a gallon of wet Peat Moss with the dirt around the roots. Dusting the fruits with Sulphur during the summer season will prevent Apricots (also Plums, Nectarines and Peaches) from rotting on the trees before fully ripe.



Apricots and Nectarines are about the most delicious of all tree fruits for the Home Orchard

## Select Large Fruiting • • Persimmons • •



Persimmon

Small trees highly ornamental and producing an abundance of pleasingly astringent spicy fruits, highly prized when gathered after the frosts. These are selected large fruiting budded trees of the American type Persimmon and available in the following varieties:

**Miller** A large high quality, hardy northern strain, almost seedless. Thin skin and ripens in early Fall. A most desirable tree for home planting.

**Lambert** Largest size fruit of any of the native Persimmons we know. Fruit oblong and of excellent quality. Trees have glossy dark green leaves and are ornamental as well as fruitful.

## Special Instructions

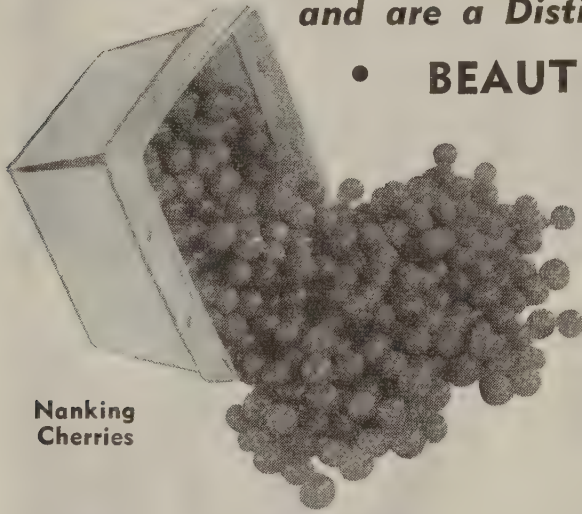
You will be assured of success with Persimmons, Red Bud, Paw Paw and Dogwoods if at planting time you will wrap the trunks quite snugly with heavy paper or burlap—and the tops loosely with the same material. Remove the top protection on a cloudy day just as soon as buds show green in the Spring. The trunks may be left wrapped for the first year. This precaution is especially desirable when planting these items in the Fall.

Persimmon Trees are what are botanically known as "Diocious," i. e., some are male and some female trees. We recommend planting two or more trees in close proximity to insure proper pollenization.

F. O. Ackers April 21, 1947 Ohio  
I have bought a few trees and plants from your firm for 35 years and I have never had anything that did not grow and prove entirely satisfactory.

# ORNAMENTAL FRUITS

Edible Fruits Which Lend a Striking Beauty to the Landscape and are a Distinct Satisfaction to the Palate



Nanking Cherries

## • BEAUTIFUL BUSH CHERRIES •

**Nanking Cherry** (*Prunus Tomentosa*.) A most ornamental upright spreading shrub. Pink in bud, the tiny flowers open a pure white with striking contrast between the white flower petals and the bright red and orange calyx. In June the branches are studded with large rich red fruits, closely resembling our early May Cherries. Good to eat and they make beautiful rich jellies and wine. Set several plants for best pollinization. Price, extra heavy, 2-3 ft., \$1.00 each, 3 for \$2.50 by express.

**Cherry Eleagnus** (*Goumi*.) A most attractive medium size shrub, fruitful and ornamental leaves silvery beneath and twigs covered with brownish pubescence, clusters of red fruits desirable in jams. The Goumi is a valuable shrub for landscaping in addition to its abundance of unusual fruits. Price 2 yr. trees, \$1.00 each, 3 for \$2.75 by express.

Varieties: **BROOKS, BLACK BEAUTY, and MANDAN GOLDEN.** See page 16 for prices and description.

## Silver Buffalo Berries

(The Indians called them Rabbit Berry)

Foliage is silvery grey with metallic lustre. The tall twiggy shrubs are wreathed in misty flowers of softest yellow in April. Later in the summer we find the stems covered with scarlet fruits the size of Currants. In spite of their sour, slightly acid taste, they are edible, being highly valued for jams and jellies. The Indians used them extensively, preserving them by drying. Plant several together to be assured of pollinization. Price 1 yr. plants 45c each; 3 for \$1.20 postpaid.

## • Truth about Bush Cherries •

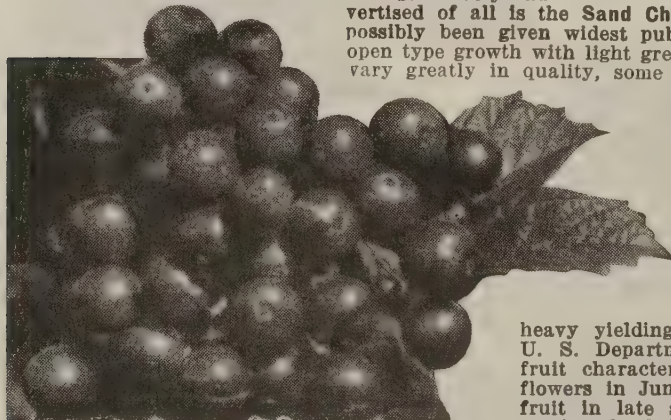
The various types of Bush Cherries all have considerable merit both for their fruit and ornamental values. The Nanking Cherry is a tall shrub producing bright red edible fruits closely resembling the early May Cherries. They produce best when several are planted together. For the most part these are all seedling types varying somewhat but all well worth while.

The Goumi or Cherry Eleagnus is the most ornamental of all the Bush Cherries—a medium sized shrub with leaves silvery beneath and both leaves and twigs covered with a brownish red pubescence. The fruits are most unique in appearance and although they are supposed to be edible, we find them entirely too astringent.

Most widely advertised of all is the Sand Cherry and of these the Hansen selections have possibly been given widest publicity. They are all medium sized shrubs of open type growth with light green foliage. The Seedling types so often offered vary greatly in quality, some inclined to be better. The finest edible and heavy fruiting varieties have been selected. These are propagated vegetatively and the fruits are highly prized. We are most enthusiastic about their size and quality, our present choice being the new large dark meaty varieties, **BROOKS, MANDAN GOLDEN and BLACK BEAUTY.** See page 16 for prices and description.



Orange Red Berries of the Cherry Eleagnus (*Goumi*)



**Wentworth** Earliest, ready to be used for jelly early in August; bush large, spreading, productive, clusters large, drooping; berries large.

{ jelly eaten with meats. The plant is a highly ornamental shrub in itself, attaining a height of about 8 to 10 feet with deep green foliage throughout the summer. Very decorative in fruit which hangs in clusters and begins to color by the end of July, remaining on the branches and keeping its bright scarlet color until the following spring.

## Am. Cranberrybush

This year we are offering only the one selection (*Wentworth*) of these large fruited heavy yielding and highly desirable types selected by the U. S. Department of Agriculture for their especially fine fruit characters. They bear large, showy masses of white flowers in June, followed by clusters of large, brilliant red fruit in late summer and fall. The fruit is very high in pectin, of a brilliant red color, and is used chiefly for making

Price, American Cranberrybush—2 yr. plants, 12-18 inches, 90c each, 3 for \$2.50, postpaid

# Ornamental Fruits

Dual purpose trees and shrubs with their many colored edible or ornamental fruits—attractive flowers and foliage, adding striking contrast in landscape planting.

**Apple Shadblow** A natural hybrid and because of its profusion of bloom and fruits it may well be classed as the finest type of the so-called Service Berries or Shad Bush. This rather stout erect shrub, with a flurry of pink tinted blossoms is truly a Herald of Springtime. In July the clusters of purplish red berries cause it to resemble a Cherry tree laden with fruits. The mild fruits are for all around use either alone or mixed with the more tart fruits such as Currants, Gooseberries, etc. Price: 2 yr., 12-15 inch plants, 60c each, 3 for \$1.50, postpaid.

**Dwarf Juneberries** A low compact shrub—not particular as to soil—a mass of white bloom in very early spring followed by reddish berries turning sapphire blue when ripe. Edible and for pies, etc. These Juneberries, Service Berries and Blueberries are among the finest of the dual purpose shrubs. Brilliant Fall coloring. Price: 75c each; 3 for \$1.85.

**Service Berry** (Shad Bush.) This is a taller type of the Juneberry attaining a height of 15 to 18 feet as tall shrub or small tree. Formerly used by the Indians in fresh and dried form. Price: 65c each, 3 for \$1.55.

**Blueberries** The Whitesbog cultivated Blueberries are the highest quality fruits of this class of plants and they are equally valuable for their waxy white blossoms and as ornamental shrubs for glossy foliage and striking fall color. For prices of Blueberries see page 4.

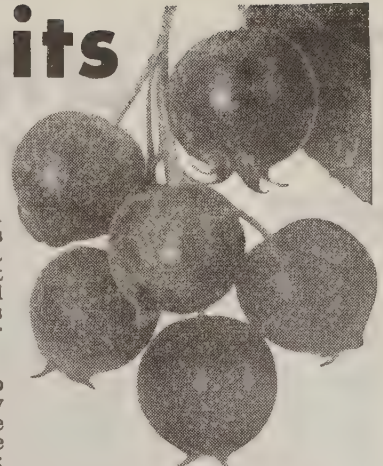
**Adams Imp. Elderberry** The large berries and extra large fruit clusters of the New Adams variety are a decided improvement over the common kinds. Makes delicious pies, jam and wine. Price, 75c each, 3 for \$2.00 by express. For Commercial Planting, 25 for \$10.00; 100 for \$35.00.

**Dwarf Fruit and Hardy Nut Trees** Practical and ornamental. Start bearing at an early age. The selected Hardy nuts are a distinct luxury and very desirable for their shade. See pages 14 and 20.

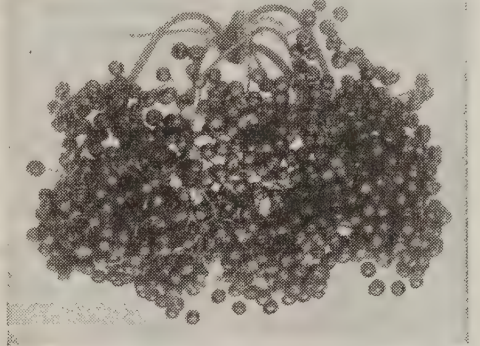
**Dolgo Crab** The brilliant red fruits are fine for jelly. See page 15 for prices and description.

**Paw Paw** This native species produces large banana-like fruits with flesh that is salmon to yellow in color, very good to eat when one becomes accustomed to its peculiar flavor. Price 3 to 4 ft. trees \$1.00 each, 3 for \$2.85 by express.

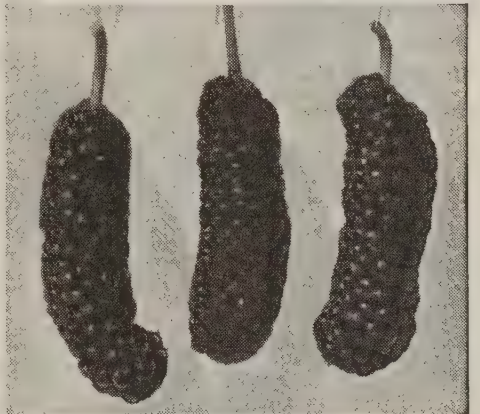
Success in starting Paw Paws, Persimmons and most other Ornamental trees if you will wrap the trunks quite snugly with heavy paper or burlap and tops loosely with the same material. Remove the top protection on a cloudy day just as soon as buds show green in the spring. The trunks may be left wrapped for the first year.



Apple Shadblow  
(Amelanchier Gr. Rubens)



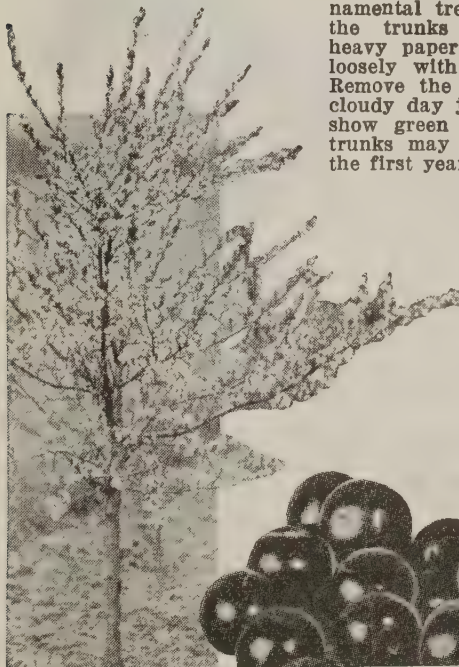
Adams Imp. Elderberry



New American Mulberry

**New American Mulberry** Often called the Everbearing Mulberry because the fruits are produced from June until September. These Mulberry trees are all very heavy fruiting, producing large jet black berries two inches or more in length, edible and most attractive to birds. They are excellent ornamental trees. Price 4-5 ft. trees, \$1.75 each, by express; 5-6 ft. trees, \$2.50 each, by express.

**Dwarf Oka Cherry** One of the most striking Dwarf Ornamental Fruiting Trees for the lawn or garden, producing a mass of snow-white blossoms in the Springtime, followed by the large dark plum-like fruits, delicious to eat and red to the pit. The trees we send out should bear fruits the following year. Autumn foliage, attractive orange red. For pollenization plant in close proximity to a Brook's Bush Cherry (See page 16). Price 4 to 5 ft. trees, \$1.75 each.



Dwarf Oka Cherry

- Plant these Ornamental fruits and derive a three-fold benefit:
1. The same ornamental blossoms and foliage as other shrubs.
  2. The fruits extend the landscape attractiveness over a longer season.
  3. They produce fruits that have a utility value and of course attract the birds.

# Ornamental Fruits

This page of Fruiting Plants not edible, but producing various colored berries of year around interest



**Cornelian Cherry** (*Cornus mas*) has always been highly prized for its golden blossoms in early spring, with little attention directed to its decorative fruit. Bejeweled now with much elongated drupes of brightest scarlet which stand out prominently against the glossy leaves, it can no longer escape notice. Fruits are five-eighths of an inch or more in length and one-half inch wide, with firm flesh of a pleasing acid flavor, edible and valuable for preserves. Cornelian Cherries are tall shrubs, or occasionally small trees whose pleasing form and fine foliage add distinction to any planting. Strong 2-3 ft. plants, 85c each; 3 for \$2.25.

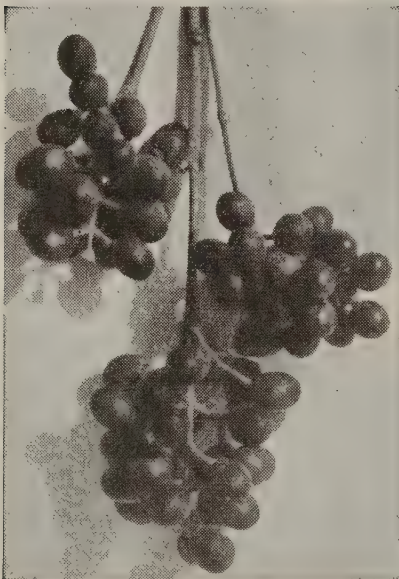


**Berrybush Yew** (*Taxus Med Kelseyl.*) A true Evergreen Yew of semi-dwarf habit, with strong dark green needles, and which bears light red berries most freely, often on plants four or five years old. This is a hardy bush form of excellent shape and which can be used in place of Boxwood in cold climates. Covered with brilliant red berries in Autumn and ranks with the best of the Evergreen berried plants. Price: 12-15" plants, \$1.00 each, 3 for \$2.75.

**Firethorn** (*Pyraeantha Lelandi*) Ranks at the top of the list of hardy fruiting shrubs with Evergreen foliage. A true Aristocrat that should be in every ornamental planting. See page 27 for illustration. Price, 3 yr. plants, B&B, \$1.50 each; 3 for \$4.00 by express.

**Aronia Striking Red Berries and Foliage in Fall. Brilliantissima** Most decorative bright red fruits which clothe the entire bush. A medium sized upright loose growing shrub with glossy foliage developing beautiful autumn tints. Price 80c each; 3 for \$2.25 by express.

Brilliant Red Photinia  
—Christmas Berry  
(Description, page 29)



**Jetbead** (*White Kerria*) — Producing three to four coffee-like berries in pods on the tips of their branches—persistent throughout the winter. A fine shrub of medium height, white flowers in spring and thrives in sun or partial shade. Blossoms intermittently from May throughout the season. Price: 2 ft. plants, 80c each, 3 for \$2.25.

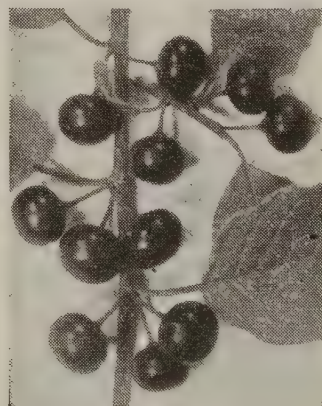
All Ornamental Fruits  
Postpaid unless otherwise  
indicated.

## SPECIAL OFFER

### Ornamental Fruits

1 Dwarf Juneberry .....	\$0.75
1 Nanking Cherry .....	1.00
1 Buffalo Berry .....	.45
1 Adams Elderberry .....	.75
1 Hansen Bush Cherry .....	.85
1 Oka Cherry .....	1.75
1 Am. Cranberry Bush ..	.90
1 Glossy Buckthorn, 3 ft.	.75

TOTAL .....\$7.20  
Special Price by express\$6.75



### Glossy Buckthorn

(*Rhamus Frangula*)—Handsome tall shrub. Shiny foliage and fruits are red changing to glossy black, ornamental and quite attractive to birds. 3 ft. plants, 75c each; 3 for \$2.00 by express.

**Regals Privet** During the winter months this plant is a mass of turquoise blueberries hanging in clusters like small wild grapes. Besides its attractive winter fruit the Regals Privet is an excellent bushy shrub and one of the finest of our hardy hedge plants. Price, 18-24 inch plants 50c each, 3 for \$1.25, by express.

**Bush Honeysuckles**  
80c each, 3 for \$2.25, postpaid.  
Heavy fruiting age \$1.25 each, 3 for \$3.00 by express.

—Tartarian Rosea Deep pink flowers followed by light red fruits.

—Triple Red (*Maxlmowecz*) has red foliage in the Spring, flowers and fruits are both a striking red.

—Zabell Red —This is the best red flowered and red fruiting of all the Bush Honeysuckle family.

# Roses . . . . .

MOST BEAUTIFUL OF  
ALL FLOWERS

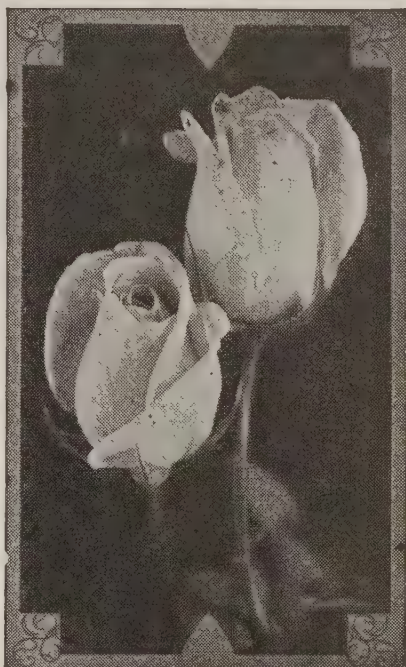
We consider our selection of Roses on this page to be the most dependable of the long list of rose varieties

You can add beauty to your home with Roses. Plant them in the garden, on the trellis and arbor. You will be proud of the everblooming Rose Bud—Fresh cut Roses from June until frost as well as the fences and walls covered in June with a blanket of Rambler Roses or the hardy large flowering types.

## HARDY EVERBLOOMING ROSES

Price heavy 2 yr. No. 1 field grown plants \$1.15 each; 5 for \$5.00, postpaid. Guaranteed to reach you in good growing condition.

- Chas. K. Douglas**—A beautiful rose with deep rich red color.
- Editor McFarland**—Deep Rose Pink. An excellent well known variety.
- Etoile de Holland**—Brilliant crimson red—one of the most dependable and long lived.
- Frau Karl Druschki**—Best of the large white hardy roses.
- Golden Charm**—Very double fragrant sunflower yellow.
- Peace**—(Patented.) (See price and description below.)
- Pink Radiance**—Still ranks as one of the best Pink roses.
- Poinsettia**—A brilliant red "Crimson Glory" rose.
- Pres. Hoover**—Cerise pink, softly flamed with yellow, orange and scarlet.



FRAU KARL DRUSCHKI  
White American Beauty

## HARDY CLIMBING ROSES

All heavy 2 yr. No. 1 field grown plants. Price, Climbing Roses, \$1.00 each; 5 for \$4.50, postpaid.

- Blaze**—(Everblooming Climber). (See price and description below.)
- Climbing American Beauty**—Deep Pink and large bloom.
- Dr. Van Fleet**—Large double white, hardy and a free bloomer.
- Excelsa**—Red Rambler, one of the best ramblers. (80c each; 5 for \$3.50)
- Paul's Scarlet**—Finest Red. A most beautiful rose.

## Everblooming Baby Ramblers (Polyanthas)

Most desirable for their continuous vivid colored blossoms throughout the late summer and early fall. Plant them in solid beds, or border your paths and garden beds and enjoy their vivid long-seasoned blossoms throughout the summer. We find them exceptionally striking when planted with Evergreens as a background. The following varieties are among the best in flowers and thriftiness of their respective colors:

- Triumph de Orleans**—Enormous heads of Rose-Pink flowers all throughout the season.
  - Golden Salmon**—Beautiful salmon richly overlaid with orange and gold.
  - Ideal**—Bright double red, one of the finest of the everblooming polyanthas.
- Price, Polyanthas Roses: 2 yr. No. 1 plants, \$1.15 each; 5 for \$5.00, postpaid.

## TWO EXCELLENT ROSES

**Peace** (Hybrid Tea Rose). (U. S. Plant Patent No. 591.) This Rose is almost unbelievable. Winner in All-America Rose Selections for 1946. Highest scoring rose throughout the entire history of All-America Rose Trials.

The buds are golden yellow, each petal edged with pink; the blooms are unusually large, very double, long-lasting and constantly fresh looking. Sturdy bushes with excellent disease-resistant foliage; very vigorous grower, strong stiff flower stems. Price, \$2.25 each.

**Blaze** (Everblooming Climber.) (U. S. Plant Patent No. 10.) Clusters of brilliant scarlet flowers cover the plant in June and repeat intermittently all season. Holds its bright color in the hottest sun. Plant in good soil as the more it grows, the more it blooms. Price, \$1.60 each.

## Plants for Shaded Locations

### Shrubs

- Barberry Thunbergii (green)
- Cornelian Cherry (Cornus Masc)
- Hamamelis Vernalis (Witch Hazel)
- Hydrangea Aboroescens (White)
- Hydrangea (Oak Leaved)
- Ligustrum (Regal Privet)
- Ninebark (Dwarf Type)
- White Kerria (Rhodotypus)

### Evergreens

- Boxwoods—both types
- Mahonia (Holly Leaf Mahonia)
- Taxus (all varieties)
- Wintercreepers (see page 27)

### Ground Covers

- Vinca Minor (Blue Periwinkle), Price \$5.00 for 25; \$12.00 per 100.
- Wintercreeper (Evergreen), Euonymus Colorata

## LEAF SPOT

Keep the foliage of your roses well covered (about every 10 days) with a good fungicide spray or dust during the Spring and Summer months and especially during extended moist rainy periods. The mild type of sulphur, the newer copper mixtures, or other commercial preparations may be used.

Plant Roses several inches deeper than they stood in the nursery row. Dig large hole and use a mixture of Peat Moss and top soil to fill the hole around the roots. Trim the top severely when planting (early Spring). Correct low pruning to produce the finest blooms is 6 to 8 inches above the ground level. In the fall for winter protection mound earth up about a foot high around the bushes and then give added protection with tall grass, straw, fodder, or other suitable material. Horticultural Peat Moss for Roses \$1.00 per bag of approximately one bushel.

# Evergreens

~~~~~For All Winter Beauty~~~~~



These are the plants that will give your planting a striking green effect throughout the winter. The varieties we are offering are the hardy types that are good compact plants and are easy to transplant. Plant them in front of your porches, in foundation or group plantings. They will double the beauty.

Prices on all Ball and Burlap Evergreens are F.O.B. Nursery. When shipment is to be made, add 50c per tree to cover packing charges.

We guarantee all Evergreens to be fresh dug, good specimens and in perfect growing condition when received. Beyond this we have no further responsibility since the planting and growing conditions are not within our control.

## Planting and Care

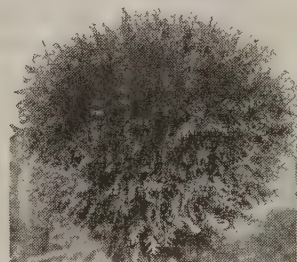
1. Mix a bucket of wet Peat Moss with good top soil in the hole when planting, firm well and water thoroughly just before the last few shovels of dirt are filled in. A two-inch mulch of Peat Moss on top of the ground around the Evergreen will prevent excessive drying.

2. Later watering should be thorough to soak down below the deepest roots. Soils are often quite dry near the foundation of a home.

3. Red spider sometimes causes Evergreens to look washed out. Dusting sulphur will control the red spider.

4. All Evergreens may be trimmed for symmetry or to prevent them from getting too tall. Very early Spring is the best time.

## Arbor Vitae



### Globe Arbor Vitae

18 inches .....\$2.25  
24 inches ..... 2.75

### Dark Green American

4 feet .....\$4.00  
5 feet ..... 5.00

### Black Hills Spruce

30 inches .....\$3.50  
36 inches ..... 4.25  
48 inches ..... 4.75

### Successful Planting

16-page booklet free with each order of nursery stock. Contains brief planting and cultural instructions including spray schedules for all fruits.

## Horticultural Peat Moss

As a service to our customers we can furnish native acid Peat Moss in bags of approximately 1 bushel each for \$1.00 each, F.O.B. Nursery.

## Biota Aurea Nana

(Dwarf Golden Biota)—Similar to Biota. Compact in shape but foliage is lighter green with beautiful golden tips. One of the aristocrats of evergreen varieties. See prices below.

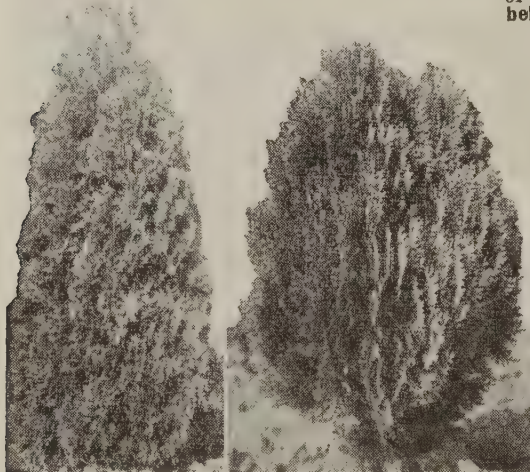
## Mugho Pine

This compact, low-growing, globe-shaped pine is without question the outstanding dwarf Evergreen for all-round use. The color is deep green in summer and winter. Available only in 12-15 inch size this year at a price of \$2.00 each.



## Taxus Capitata

The Yews are the very finest Evergreens for shady locations, North side, as well as general foundation plantings. Have a good green foliage and upright habit which should be sheared to maintain the desired shape. Price, 18 inch trees, \$5.00; 24 inch trees, \$6.00; 40 inch trees, \$7.50; 36 inch trees, \$8.50.



### Pyramid Arbor Vitae

3 ft. ....\$3.00  
4 ft. .... 4.00  
5 ft. .... 5.50  
6 ft. .... 6.50

### Golden Biotas

18 inches....\$2.50  
24 inches.... 3.25  
30 inches.... 4.00

### Pfitzer Juniper

24 inches .....\$3.75  
36 inches ..... 4.50  
42 inches ..... 5.50  
48 inches ..... 6.00

### Irish Juniper

3 ft.....\$3.00  
4 ft..... 4.00  
5 ft..... 4.75  
6 ft..... 5.50



# Evergreens

(Evergreen Shrubs)

## WINTERCREEPERS

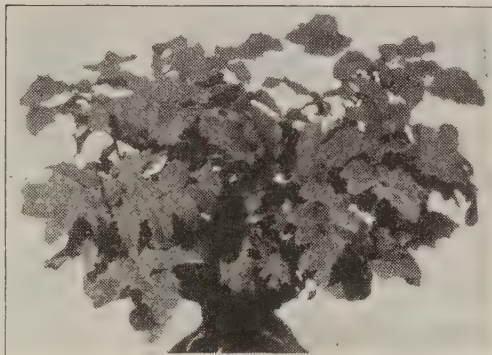
These low evergreen shrubs (varieties of *Euonymus*) with their lustrous green distinctly veined leaves are best suited for low foundation plantings, low evergreen hedges, as edging plants, as filler plants in front of taller evergreens. Several types are ground cover plants and others if given some support will climb stone or brick walls, chimneys, etc., forming a beautiful evergreen vine.

—**E. Carrieri** (Evergreen Bittersweet) Broader leaf, low shrub type. This one for low hedge, edging and for specimen foundation plant. When allowed to grow unshredded it produces numerous small pods of bitter-sweet-like berries.

—**E. Colorata** (Red Wintercreeper)—A highly desirable vine for walls, stonework and one of the best of refined ground covers and especially to hold terraces and slopes from washing. Remarkable for its brilliant red tints of foliage in the autumn changing to bronze and purple during mid winter.

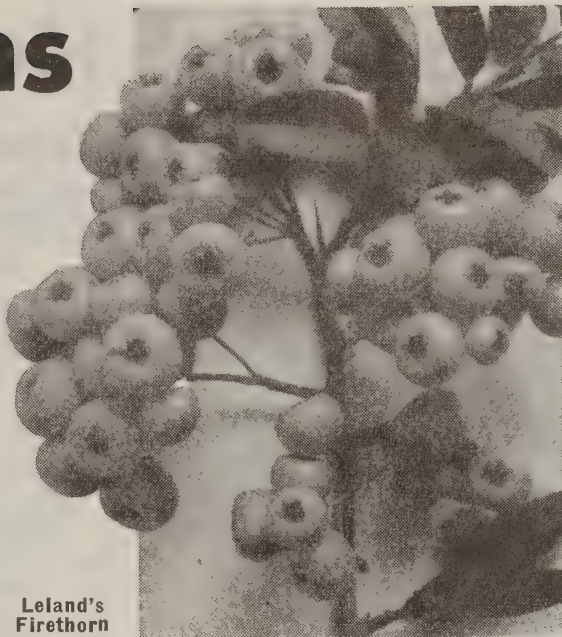
—**E. Vegetus** (Big Leaf Wintercreeper)—Slower in growth but one of the hardiest and best of all. (2 yr. vines only of *E. Vegetus*.)

Price all Wintercreepers—Strong 2 yr. vines, 75c each; 3 for \$2.05



**Mahonia** (Oregon Holly)—Low growing evergreen, leaves very similar to Holly, produces clusters of yellow flowers followed by black berries. Thrives in sun or shade. Price Heavy 18-24 inch, well-branched, B & B plants, \$2.50 each.

**Douglas Fir** Beautiful Evergreen tree with bluish grey appearance. Tolerant of shade as well as smoke and gasses of the city. Price 4 ft. \$5.00; 5 ft. \$6.50; 6 ft. \$7.50.



Leland's Firethorn

**Firethorn** (*Pyracantha Lelandi*)—An evergreen shrub with small dark green leaves, compact habit of growth, much branched. White flowers in spring followed by large clusters of bright orange scarlet berries. One of the most satisfactory shrubs to use. Must be planted in early spring or late fall. Price, large 3 yr. plants, B & B, \$1.50 each; 3 for \$4.00.

## Hardy Boxwood

—**Dwarf Dark Green**—Used extensively as edging and for low edges. The Boxwood is the most desirable low Evergreen hedge plant—especially in shaded and protected areas.

—**Hardy Korean**—Possesses most attractive glossy light green leaves—not as dark green as the common Boxwood but much hardier. Excellent as specimen plants or for edging purposes.

## Special Boxwood Offer

Hardy Dwarf Type, 2 yr. 8-10 inch  
 3 plants for...\$1.50      20 plants for...\$ 7.50  
 10 plants for... 4.00      100 plants for... 30.00  
 No extra packing charge for shipping. See bottom of page for prices on larger specimen Boxwood. These smaller plants are not Balled and Burlaped.

All Evergreens except the Wintercreepers and prices listed on these pages are Heavy Landscape type plants, Balled and Burlaped.



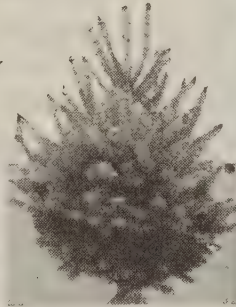
Spiny Greek Juniper

18 inch—\$3.50  
 24 inch— 4.00  
 30 inch— 4.50



Hardy Boxwood

Koreana  
 15 in.—\$3.75  
 18 in.— 4.10



Norway Spruce

2 ft.—\$2.50  
 3 ft.— 3.25  
 4 ft.— 4.00  
 5 ft.— 5.00  
 6 ft.— 6.50



Upright Junipers  
 Keteleeri and Hills Dundee  
 4 ft.—\$ 6.50  
 5 ft.— 8.50  
 6 ft.— 10.00

# Beautiful Hedge Plants

## Low Edging • Medium Hedges • Tall Screens

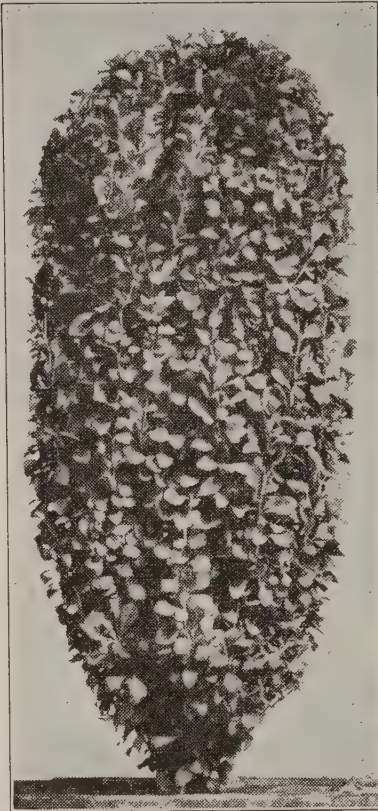
All Heavy Field Grown Plants—Not to be confused with Small Seedling Plants often offered at bargain prices.

### Truehedge Columnberry Sensational New Hedge Plant

Foliage and Growth Similar to the Boxwood

The quick, erect, compact growth of the Columnberry results in a "self-made hedge." It retains its neat, well groomed appearance with very little trimming. The leaves are larger, thicker and of a much deeper, glossier, healthier shade of green than common Japanese Barberry, taking on a rich deep red coloring in the fall. Its winter beauty lies in the numerous red berries produced profusely and which hang on the bushes until spring. Entirely hardy anywhere in the U. S.

Single plants of the Columnberry may be sheared to specimen pyramids, ovals, espalier and tree shapes. This is truly a remarkable new plant both as an individual shrub and for hedging.



This Plant of Truehedge Columnberry Trimmed Just Once. A Natural Narrow Upright Hedge Plant and As An Individual Upright Shrub in the Landscape Planting.

#### Price Truehedge Columnberry

| Rates—Each | 5           | 25            |
|------------|-------------|---------------|
| 12-15 Inch | .....\$0.65 | \$0.50 \$0.44 |

### Successful Planting

Of all Shrubs and Hedge Plants

1. Either Fall or early Spring planting is satisfactory for most all Nursery Stock except the more tender varieties.

2. Plant when the soil is mellow—not wet, or soil will bake and crack as it dries.

3. Use only good top soil when planting and firm well around the roots.

4. A mixture of decadent leaf mold or wet Peat Moss with the soil when planting will work magic with growth. Bone meal may also be used but avoid manure or strong commercial fertilizer near the roots.

5. Trim top growth back one third to one half on all woody plants to balance the shock of transplanting.

6. Keep the soil well cultivated around each plant or use a mulch of strawy manure or Peat Moss to be spaded in each Spring.

7. When necessary to water, soak the soil to the full depth of the roots.

8. Varieties difficult to transplant should have tops protected with light burlap or cloth until growth starts. The Firethorn, the Fringes and Witch Hazel are benefitted by this protection.

## PRIVET HEDGE PLANTS

### Beautiful, Hardy Ibolium Privet

Is one of the finest of all the Hedge plants. Quick growing; deep glossy green leaves and compact upright type of growth. This is a hardy type of the California Privet.

| Prices Ibolium Hedge  | Per 10 | Per 25 | Per 100 |
|-----------------------|--------|--------|---------|
| 2 yr. 12-18 inch..... | \$2.50 | \$4.50 | \$16.00 |
| 2 yr. 18-24 inch..... | 3.00   | 6.75   | 20.00   |
| 2 yr. 2-3 ft. ....    | 4.50   | 8.50   | 25.00   |

### Hardy Regals Privet

An extremely hardy hedge plant with a very graceful type of horizontal growth. Makes an excellent hedge.

| Prices Regals Privet Hedge | Per 10 | Per 25 | Per 100 |
|----------------------------|--------|--------|---------|
| 3 yr 12-18 inch.....       | \$4.50 | \$8.50 | \$25.00 |
| 3 yr. 18-24 inch.....      | 5.50   | 10.00  | 35.00   |

### Barberry Hedge Plants

Not Subject to Wheat Rust

#### Green Barberry

|                             | Per 10 | Per 25  | Per 100 |
|-----------------------------|--------|---------|---------|
| 2 yr. 12-18 inch.....       | \$3.00 | \$ 5.00 | \$17.50 |
| Heavy 3 yr. 18-24 inch..... | 5.50   | 10.00   | 40.00   |

#### Red Leaf Barberry

|                             |        |         |         |
|-----------------------------|--------|---------|---------|
| 2 yr. 12-18 inch.....       | \$4.00 | \$ 7.00 | \$30.00 |
| Heavy 3 yr. 18-24 inch..... | 6.75   | 12.00   | 50.00   |

### Low Edging Plants

#### Boxwood, Dwarf (Dark Green)

|                     |        |        |         |
|---------------------|--------|--------|---------|
| 2 yr. 6-9 Inch..... | \$4.00 | \$7.50 | \$30.00 |
|---------------------|--------|--------|---------|

Prices of all Hedge Plants on this page by express, not prepaid.

**IMPORTANT** In ordering stock from this page please designate them as "HEDGE PLANTS" so that you will be entitled to these special low prices.



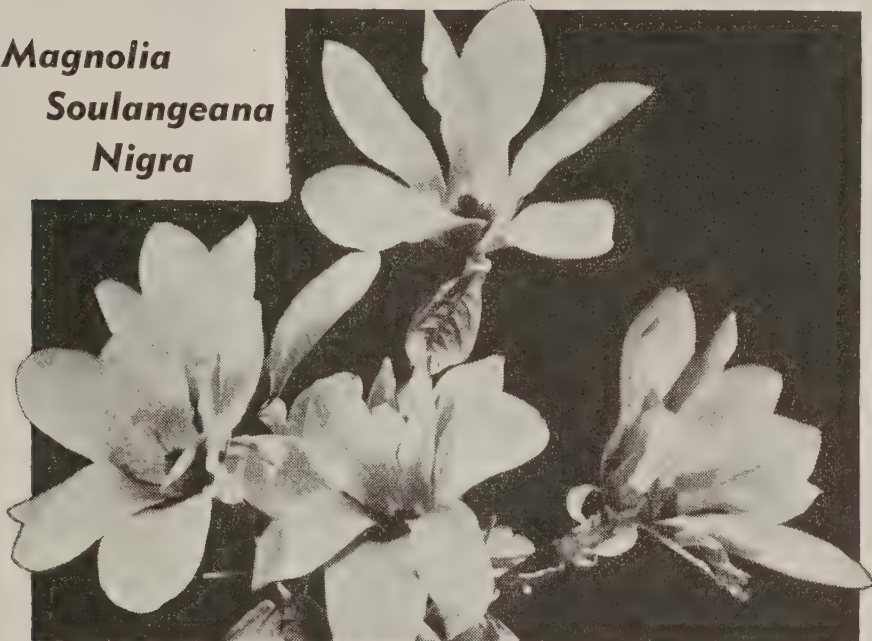
Beautiful Privet Hedge



# New and Rare Trees

## RED SAUCER MAGNOLIA

*Magnolia  
Soulangeana  
Nigra*



Large Purplish Red Blossoms 3 to 5 inches across, shading to Pink when open.

The entire tree is a mass of bloom early in the Spring before the leaves appear, and is really about the most colorful and striking in appearance of all the flowering trees.

This variety is the hardiest and most adapted to northern conditions. All magnolias are balled in Peat moss for shipment. Price, heavy well-branched trees, 2-3 ft., \$3.95 each.

### --CRIMSON KING-- New Red Norway Maple

CRIMSON KING is a beautiful form of Schwedler Maple originated in Europe. It is brilliant crimson all through the summer months. CRIMSON KING has been under observation in America for ten years and has kept its brilliant coloring all through the season.

Here is probably the most colorful of all the larger ornamental trees. It is truly an aristocrat and the one outstanding introduction of new plant material since the war. As other maples, Crimson King is almost entirely free from serious insects and diseases. Be the first to have one of these outstanding new red maples in your community.

Order today. Price, 3-4 ft. trees \$4.50 each.

#### PLANT THESE COLORFUL TREES

Every tree listed on this page is unique and colorful in either flower, fruit or striking foliage. You will be proud to have them growing in your lawn.

### FLOWERING CHERRIES

The lovely planting of these trees along the Potomac River Drive at Washington, D. C., is the most notable collection of Oriental Cherries. The fame of these cherries has spread all over the U. S., and as they are hardy everywhere they should be largely planted.

**Kwanzan** Double Flowering pink to old rose blossoms. One of the loveliest of the flowering cherries. Price, 4 ft. trees, \$2.50.

### For Refined Lawn Planting

**Ginkgo Tree** Unique because it is one of the oldest varieties of trees known. The tree is picturesque, medium to large size at maturity, and forming a compact round head closely resembling a well grown Oak. The foliage is striking in appearance and seems to be impervious to attacks from insects. The Ginkgo is an ideal tree for doorway and street planting in addition to its antiquity and biological interest. Price, 6-7 ft. trees, \$4.00 each.

**Christmas Berry Tree** (Photinia Villosa) An irregular small tree to 12 ft. with sleek rich dark green foliage throughout the summer. The trees are literally covered with bright red berries throughout the fall. (See page 24 for illustration.) Price, 2 yr. 2-3 ft., 85c each; 3 for \$2.00.

**Golden Rain Tree** A rare, handsome tree reaching a height of not more than 30 ft. Very showy in July when spangled with foot long clusters of golden yellow flowers and in Autumn when foliage turns to crimson and gold. Price, 4-5 ft. trees, \$3.00 ea.

**The Tree of Fire** (Prunus Cistena.) Brilliant red coloring of the leaves all through the summer. Finest of the "Red Leaved" trees. Attains a height of 10 to 12 ft. Price, 4-5 ft. trees, \$2.00 each.

**White Birch** Not new but always prized in lawn plantings for their striking beauty in winter and summer.

#### —European White Birch

|                |         |
|----------------|---------|
| 6-8 ft. ....   | \$ 3.00 |
| 10-12 ft. .... | 7.50    |
| 12-15 ft. .... | 20.00   |

#### CHINESE CHESTNUT

(Bright Resistant). The hardy Nut Trees are Excellent for shade and refined lawn planting. (See page 20.)



# Ornamental Trees



New Pyramidal Maple

**Pyramidal Maple** A narrow Pyramidal sport of the Norway Maple developed in the Park system of Rochester, N. Y. Foliage retains its refreshing greenness from early spring until late autumn. This is certainly one of the tree aristocrats and meets the demand for a long-lived Pyramidal tree. Price 8-10 ft. trees \$4.50 each.

**Red Leaf Maple** (Schwedleri). This is of the Norway type except that the early spring foliage is red, turning to purple and then green throughout the summer and then with good red coloring again in the fall.

## ● DOGWOODS ●

Most beautiful of our native woodland trees. Fine specimen for the lawn.

- White Flowering, 3-4' ..... \$3.00
- White Flowering, 4-5' ..... 3.50
- White Flowering, 5-6' ..... 5.00
- Pink Flowering, 3' ..... 3.50

### Crimson King New Red Maple

Holds Color Throughout the Summer  
(See Page 29)

## ● FLOWERING CRABS ●

Price All Flowering Crabs: 4-5 ft. trees, \$1.75 ea., 3 for \$4.50.

**Eleyii** Red Veined (Eleyii) Crab—Red in blossom, coppery red in foliage, red edible fruits and red stained bark. A new upright type and a choice small refined tree.

**Dolgo Crab** A true crab apple producing heavy crops of highest quality fruits for jellies, etc. Blossom pinkish white but its great ornamental value lies in the abundance of fiery red fruits which hang on the tree long after ripe. This is a new variety from the northwest and it bids for highest place as a dual purpose crab apple.

**Hopa Crab** Rose-pink flowers, red fruit, bronze green foliage.

**Red Bud** These and the Dogwood trees with their masses of colorful blooms on the hillsides or in the garden are symbols of spring-time. The Rosy-pink flowers of the Redbuds are produced before the leaves and are showy in bud as well as in full flower. Heavy 4-5 ft. trees, \$2.00 each.

**Golden Bark** Thriftiest and hardiest of all the Weeping Willows we have grown.

**Weeping Willows** Excellent lawn tree and very easy to grow. Plant early in spring (or in November). Price, 5-6 ft. trees, \$1.75; 6-8 ft., \$2.50.



PINK FLOWERING DOGWOOD  
Blossoms Profusely at 3 ft.

## Scarff's Trees Grow

1. Cut top growth back one-third when planting.
2. Wrap trunks with coarse paper or light burlap for protection the first year.
3. Mix moist Peat Moss with the dirt in the hole around the roots when planting.
4. Firm dirt well around roots and then water.



Berries of Mt. Ash

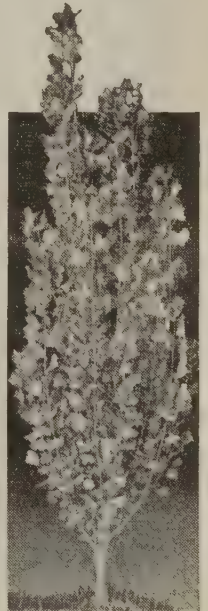
## Berries of Mt. Ash

Change from green to orange and then almost scarlet in the fall. A medium sized upright tree most suitable for refined lawn planting. Price 7-8 ft. trees \$3.00.

## Other Ornamental Shade Trees

|                                      | Each   |
|--------------------------------------|--------|
| Elm, Chinese, 8-10 ft. ....          | \$3.50 |
| Elm, Chinese, 10-12 ft. ....         | 5.50   |
| Maple, Norway, 8-10 ft. ....         | 4.00   |
| Maple, Norway, 10-12 ft. ....        | 5.00   |
| Maple, Scarlet, 3-4 ft. ....         | .75    |
| Maple, Schwedleri, 8-10 ft. ....     | 4.50   |
| Maple, Silver, 8-10 ft. ....         | 3.00   |
| Maple, Silver, 10-12 ft. ....        | 4.00   |
| Maple, Sugar, 4-5 ft. ....           | .90    |
| Mulberry, American, 5 ft. ....       | 2.00   |
| Poplar, Lombardy, 6-8 ft. ....       | 1.25   |
| (10 for \$10.00)                     |        |
| Poplar, Lombardy, 8-10 ft. ....      | 1.75   |
| (10 for \$15.00)                     |        |
| Red Bud, Heavy 4-5 ft. trees ....    | 2.00   |
| Sycamore (American) 8-10 ft. ....    | 3.00   |
| Sycamore (American) 10-12 ft. ....   | 4.00   |
| Sycamore (American) 12-15 ft. ....   | 6.00   |
| Paw Paw, 3-4 ft. ....                | 1.00   |
| Tulip Tree, 5-6 ft. ....             | 1.00   |
| Willow, Golden Weeping, 5-6 ft. .... | 1.75   |
| Willow Golden Weeping, 6-8 ft. ....  | 2.50   |
| Willow, Pussy, 4-5 ft. ....          | .85    |

All trees on this page are priced by express not prepaid.



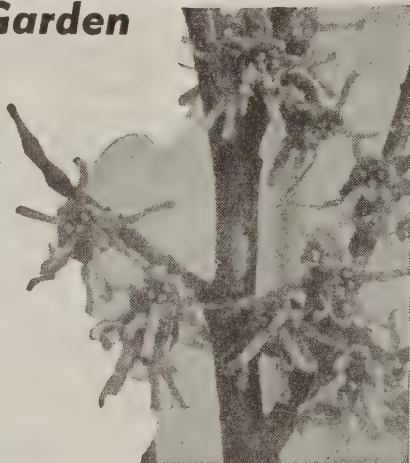
Lombardy Poplar

# New and Rare Shrubs

## Aristocrats of the Garden

### Winter Flowering Witch Hazel

**Hazel** (*Hamamelis Vernalis*.) A profusion of orange red or yellow blossom, sweetly fragrant, in January and February. This is an excellent new shrub, compact and symmetrical, attaining a height of 4 to 6 ft. It is not unusual to find these plants aglow with blossoms some warm winter morning. If the temperature drops, the petals roll up and wait for another warm day, when they are as cheerful as ever. Large 2-3 ft. blooming size plants \$1.00 each; 3 for \$2.50 by express, not prepaid.



Winter Flowering Witch Hazel

### Red Leaved Maple

The blood red color of the foliage in early spring makes it one of the outstanding shrubs—or small trees—for accent planting in the lawn and border. The Oshio-Beni variety which we are offering is one of the best in both color and hardiness. Price, 2 ft., \$3.50 by express.

### New Bush Honeysuckle

**Zabell Red** (*Lonicera Zabelli*). Finest red and most prolific in blossoms of all the Bush Honeysuckles. An attractive roundish upright bush to 5 or 6 feet at maturity. Foliage is slightly bluish cast and free from blight which affects some of the Honeysuckles. Excellent for specimen, hedge, or border planting. Price heavy 3 ft. plants \$1.00 each, 3 for \$2.75 by express.

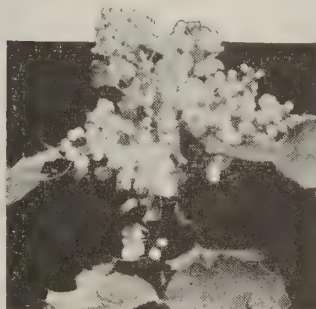


**PRUNUS TOMENTOSUM**  
(Nanking Cherry)

See page 22 for prices and description.

### Cornelian Cherry

(*Cornu Mas*)—Yellow bloom in mid-March is excellent for indoor bouquets. Scarlet, plum-like edible fruits in August. Tree-shaped shrub, tolerant of shade. Heavy 3 ft. plants, \$1.00 each; 3 for \$2.50 by Express.



### Holly Leaf Mahonia

Brilliant yellow flowers followed by blue berries. An Aristocrat Evergreen Shrub especially for north sides and other shady locations. Price, Heavy 18-24 inch, well-branched, B & B Plants, \$2.50 each.

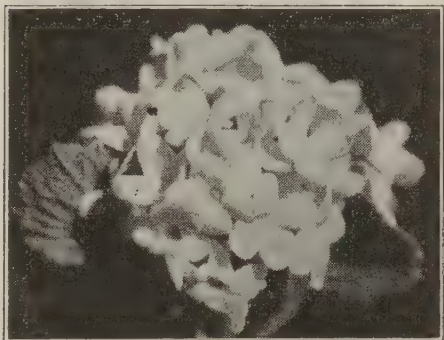
### Smoke Bush

(*Rhus Cotinus*)—The Purple Fringe, as it is often called, most noted for its very showy effect produced by the peculiar long-haired seed stems giving the effect of being covered with a purplish film of smoke. 2-3 ft. plants, \$1.00 each, 3 for \$2.50 by Express.

### Beautiful French Lilacs

Any description would fall short of the real beauty both in form and fragrance of these marvelous flowers. They are among the hardiest of all shrubs and very easily grown. The following select varieties are among the thriftiest and most profuse bloomers. Casimer Perler, Dbl. White—Chas. Joly, Dbl. Red—Marc Michell, Dbl. Lavendar—Katherine Havemeyer, Dbl. Pink.

Price, all varieties, strong 18-24 in. plants, \$1.25 each; 3 for \$3.50, by express.



**PINK KOREAN SNOWBALL**  
(Fragrant Viburnum)

### Pink Korean Snowball

Sometimes called the Mayflower Viburnum as it resembles the Mayflower in fragrance and blossom. One of the outstanding New Varieties of recent introduction. Blooms profusely in early spring and flowers are pink in color and heavy laden with spicy fragrance. Price, strong 2 ft. plants, \$1.75; 3 for \$4.75, postpaid.

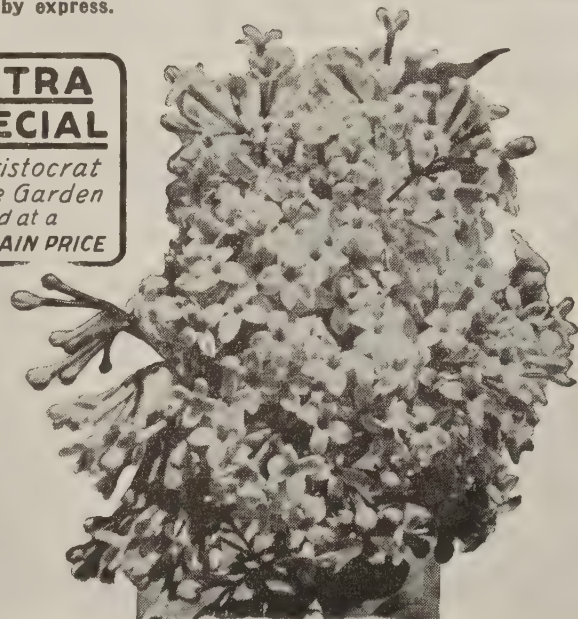
(*Viburnum Carlesii*.)

### Everblooming Lilac

(*Syringa Mierophylla*.) A rare new shrub introduced from China by the Arnold Arboretum. A mass of lilac pink blossoms in early spring. It has the unique habit of blooming a second time in the autumn and often stray blossoms throughout the summer. A good shrub for the lawn and border planting. Price, 2 yr., 2 ft. plants, \$1.00 each; 3 for \$2.75, postpaid.

**EXTRA  
SPECIAL**

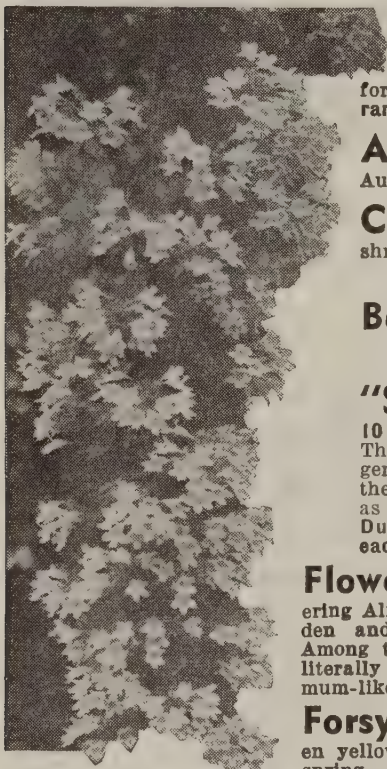
*An Aristocrat  
of the Garden  
and at a  
BARGAIN PRICE*



Everblooming Lilac

# Ornamental Shrubs

**Prices** All shrubs on this page are strong 2 and 3 year field grown plants suitable for Landscape planting. Price (unless otherwise noted)—75c each; 3 for \$2.00 by express, not prepaid. If by mail send 15c per plant additional.



**KOLKWITZIA AMABILIS**  
Beauty Bush

**Beauty Bush** (*Kolkwitzia Amabilis*)—This New *Kolkwitzia*, or Beauty Bush, has proven to be a most valuable shrub for general planting. Perfectly hardy, and in the spring its arching branches with their masses of abelia-like blooms transform the entire plant into a foundation of pink loveliness. Beauty Bush is rare and beautiful.

**Althea** (*Rose of Sharon*)—Showy flowers in August, Red, White and Pink.

**Calycanthus** Sweet scented shrub.

**Notice** If order includes Nursery items priced "Pre-paid" and others "Express Collect," the entire order will be sent "Express Collect." In this case you may deduct 5% from the "Postpaid" prices.

|                                                      |        |        |
|------------------------------------------------------|--------|--------|
|                                                      | Each   | Five   |
| <b>Barberry</b> Green Leaved 3 yr., 18-24 inch ..... | \$0.70 | \$2.75 |
| Red Leaved, 3 yr., 18-24 inch .....                  | .80    | 3.50   |

• See Page 28 for Barberry Hedge Plants •

**"Scarff's Beautiful Butterfly Bushes"** 50c each; 3 for \$1.25; 10 for \$3.50 (Except "New Red") **NEW PINK BUDDLEIA "CHARMING."** This is truly the aristocrat of the Butterfly family. The blossoms are a genuine bright pink with large, well set flowers from the base to the tip of the spike—and of course is attractive to all Butterflies. Other varieties are as follows: *Imp. Magnifica* (Lavender); *Ile de France* (Deep Purple); *Dubonnet* (Reddish Lavender); *White Cloud* (White); **NEW RED** (\$1.00 each, 3 for \$2.25).

**Flowering Almond** This "Double" flowering Almond is from the old fashioned garden and still unsurpassed in its season. Among the first to bloom in the spring, it literally covers itself with small Chrysanthemum-like flowers.

**Forsythias** The goldenbells with their arching branches of golden yellow flowers are first to bloom in the spring.

—**Spectabilis**—The most profuse bloomer, upright and by far the best.

—**Suspensa**—The true weeping goldenbell.

**Hydrangeas** These large flowering shrubs are excellent for either lawn or foundation planting.

—**Arborescens**—Large white flowers and everblooming.

—**Paniculata Gr.**—The large pink hydrangea. May be trimmed tree form.

**Honeysuckles** Most valuable tall growing shrubs. In beautiful foliage, flowers and attractive fruits.

—**Fragrantissima**—Almost evergreen. One of the finest of all shrubs.

—**Zabelli**—Finest of the deep Pink Bush Honeysuckles. Large red berries.

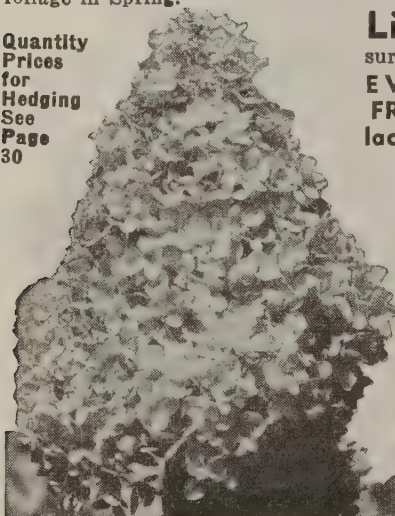
—**Maximoweczi**—New deep red flowers and plenty of red berries. Red foliage in Spring.



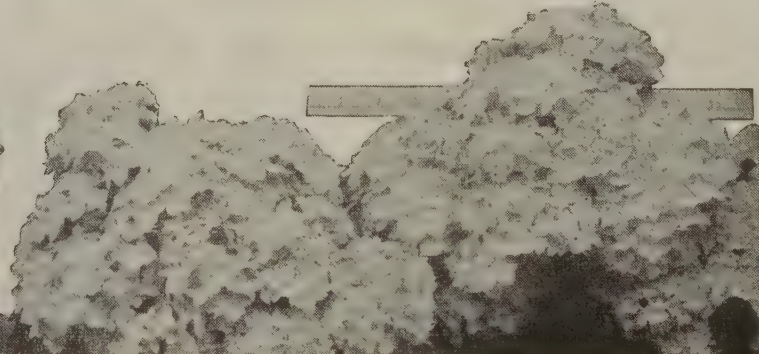
**PHILADELPHUS VIRGINALIS**  
Beautiful, large, semi-double, sweet-scented syringa

**Lilacs** The old-fashioned white and purple lilacs are not surpassed in beauty and fragrance—**EVERBLOOMING LILAC, FRENCH LILACS** and Other Lilacs—See page 31.

Quantity  
Prices  
for  
Hedging  
See  
Page  
30



Pink Hydrangeas



Massive Flower Clusters—Over a Foot in Width—White Hydrangeas

# Ornamental Shrubs

**Prices** All shrubs on this page are strong 2 and 3 year field grown plants suitable for Landscape planting. Price (unless otherwise noted)—75c each; 3 for \$2.00 by express, not prepaid. If by mail send 15c per plant additional.

## Beautiful Spireas

**Anthony Waterer**—Dwarf red—free blooming.

**Van Houttei**—(Bridal Wreath) An old favorite.

Masses of White flowers in May

Both the White and Red Spireas are excellent as cut flowers in bouquets.



Spirea Van Houttei



## Golden Syringa

Foliage golden yellow throughout the entire summer. One of the most striking small shrubs. Grows in sun or shade. Attains a height of about 3 ft. Include this colorful shrub in your planting.



**Large French Pussy Willows**  
—They come as a herald of Springtime.

## SAVE \$\$\$—Scarff's Special Offers

|                                     |   |                                   |
|-------------------------------------|---|-----------------------------------|
| Strawberry Garden.....Page 3        | } | Ornamental Fruits.....Page 24     |
| New Grape Offer.....Page 12         |   | Climbing Rose Offer.....Page 25   |
| Novelty Fruit Collection....Page 14 |   | Special Boxwood Offer.....Page 27 |

**Philadelphus** The mock oranges are most noted for their waxen white fragrant orange-like blossoms.

—**Virginalis**—Best of the new large flowering syringas, semi-double blossoms.

—**Bouquet Blanc**—The most profuse bloomer of all. Neat compact shrub.

—**Golden**—(Philadelphus Aurea) Golden yellow foliage throughout the summer. A dwarf plant, usually not growing over 3 ft.; excellent to use for contrast against the other darker shrubs and evergreens.

**Prunus Tomentosum** (Nanking Cherry) — Excellent upright tall shrub to 10 ft. Masses of cherry-like flowers (some pink tinted) in very early spring. In July the shrubs are loaded down with large edible red Cherries one-half inch in diameter. (See page 22.)

**Purple Fringe** (Rhus Cotinus) —The purple mist-like appearance of this shrub is most fascinating. Found in landscapes old and new. Excellent specimen shrub.

**Tamarix** Tall shrub, fine foliage general appearance resembling asparagus. Mass of lilac flowers in May.

## Double File Viburnum

(Vib. Tomentosum). A fine all-season shrub. In early June the horizontal branches become masses of wheel-like clusters ringed with dazzling white flowers with spidery sunburst centers, resembling a fall of snow. Blue black berries and fine autumn foliage.

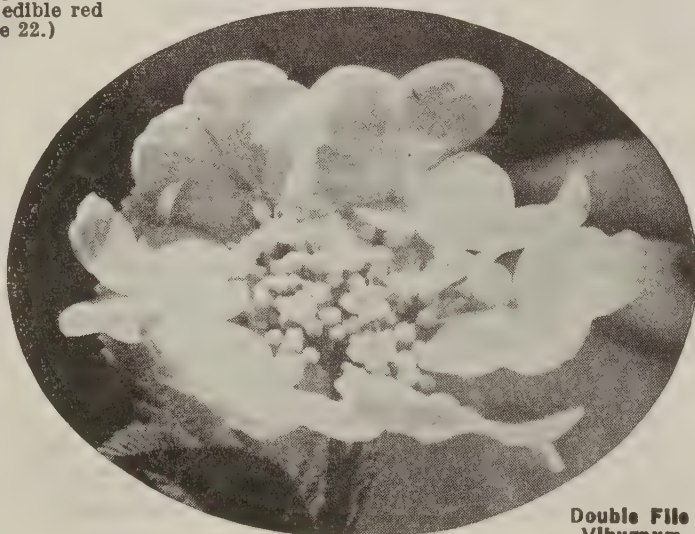
**Weigela** Eve Rathke — Flowers deep carmine red. Blooms profusely in spring and again in autumn.

**Rosea**—Flowers deep pink in early June.

**European Burning Bush** (Euonymus Alatus Compacta)—This rich dark green shrub attains a height of 8 to 10 ft. and in the fall produces numerous Bittersweet-like berries, four-lobed and ranging from pink to orange-red, and in addition the lustrous green foliage in the autumn changes three various shades of deep to bright red. One of the finest of all shrubs. (Not Available This Year.)

**Flowering Quince** The pink flowers appear before the leaves and are followed by yellow quince-like fruits. Sometimes called "Fire Bush" or "Japonica."

**Snowball** The common Snowball is still an old time favorite.



Double File Viburnum

# New Oriental Wistaria

## And Other Hardy Climbing Vines

**Longcluster Wistaria** These new very long blossomed Wistarias are selections made from native Oriental Wistarias producing not only enormous length flower clusters but also of the most delicate shades of color. These new super-blooming, large cluster Wistarias are easy to grow and need no special soil or cultural requirements.

—**Floribunda Kyushaku**—Lavender flowers with not uncommon clusters four to five feet long—possibly the longest of any Wistaria flowers.

—**Rose Weeping Wistaria**—A favored color is this superior lovely clear pink. Flower clusters of medium length on young plants; 24 to 30 inches on established vines. A real sensation.

Price on all Longcluster Wistarias \$1.25 each.

### ● Evergreen Wintercreepers ●

Excellent plants for ground covers, edging, and if given some support they are the finest of the Evergreen climbing vines.

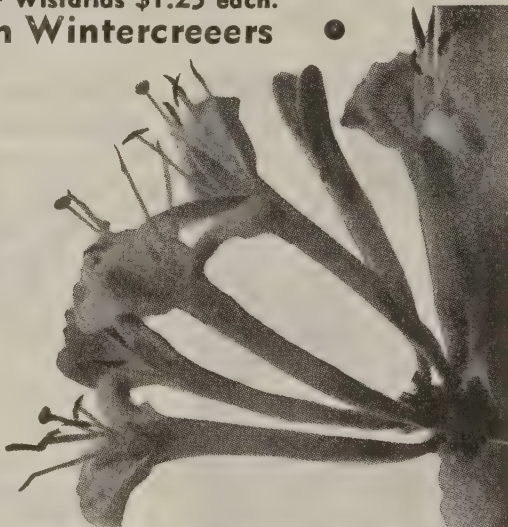
See page 27 for more complete descriptions of Wintercreepers.

—**E. Carrieri**—Produces Bittersweet-like pods in late fall.

—**E. Colorata**—Best for ground cover, and for foundations, walls, terraces, etc.

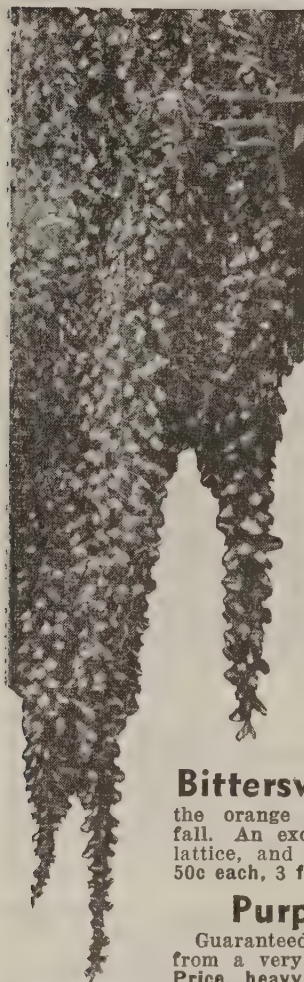
—**E. Vegetus**—Slowest in growth but hardest of all.

Price, all Wintercreepers—Strong 2 yr. vines 75c each, 3 for \$2.00.



Scarff's Old-Fashioned Sweet Scented Halls Honeysuckle, 50c each.

**Silver-Lace Vine** (*Polygonum Auberti*) This charming climber will clamber gracefully over a trellis, porch, or arch, or any other support. Grows very rapidly, averaging 25 ft. in a season. When in bloom it is a cloud of lacy, misty, white with tints of cream and pale rose of most exquisite beauty. Produces more bloom than any other hardy vine and over a long period of time from late summer well into the fall. Price, 2-yr. vines, 75c each, 3 for \$2.00.



Longcluster Wistaria

**Bittersweet** The vines become laden with the orange colored berries in the fall. An excellent vine for porches, lattice, and to cover fences. Price, 50c each, 3 for \$1.35.

### Purple Wistaria

Guaranteed to bloom. Propagated from a very heavy blooming strain. Price, heavy 2 yr. plants, 75c each, 3 for \$2.00.

### Clematis

—**Paniculata**—(Virgin's Bower.) In mid-summer the entire vine is clothed in a mass of white bloom, followed by numerous light feathery seeds which are attractive until late in the winter. Price, 75c each, 3 for \$2.00.

—**Large Flowering**—Purple Clematis Jackmani. Price, \$1.00 each, 3 for \$2.50.

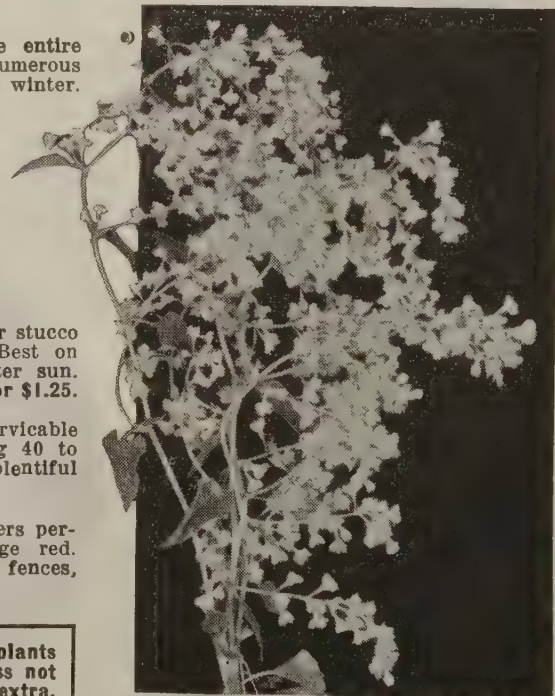
**Boston Ivy** The most desirable Ivy for chimneys, brick and stone walls. Price, 50c each, 3 for \$1.25.

**True Dutchman's Pipe** 2 yr. plants \$1.00 each.

**English Ivy** The Evergreen Ivy for stone, brick or stucco walls, foundations and chimneys. Best on north sides or other locations protected from the winter sun. Excellent indoor house plant. Heavy plants 50c each, 3 for \$1.25.

**Kudzu** A remarkable, very quick growing and servicable porch vine, excellent quick screen, growing 40 to 50 feet in one season. Rose purple, pear-shaped flowers plentiful in August. Price 50c each; 3 for \$1.25.

**Trumpet Flower** From the old garden. Flowers perfect, trumpet-shaped, orange red. A rapid grower, one of the finest vines for covering fences, trellises, etc. Price, 50c each; 3 for \$1.25.



Silver Lace Vine

All vines listed on this page strong 2 yr. field grown plants (unless otherwise specified) and will be sent by express not prepaid. If ordered by mail postpaid send 5c per plant extra.

# Perennials

All Perennials Postpaid unless otherwise indicated.

- Bleeding Heart** \$1.00 each, 3 for \$2.75.  
**Bristol Fairy Gypsophylla** Double Baby's Breath. 60c each, 3 for \$1.75.  
**Delphinium** Large Hybrid Types. 35c each, 3 for \$1.00.  
**Gaillardia** 35c each, 3 for \$1.00.  
**Hardy Chrysanthemums** Pink Cushion type. Pillows of color in the Fall.  
 4 colors—Pink—Bronze—Burgundy Red—Yellow  
 Price, 3 for \$1.00, 10 for \$2.75.  
**Red Hot Poker** 45c each, 3 for \$1.25.  
**Red Live Forever** (Sedum Brilliant). 35c each, 3 for \$1.00. Blooming clumps, \$1.00 each.  
**Shasta Daisy** King Elder Variety. 35c each, 3 for \$1.00.  
**Yucca** Golden Variegated—Evergreen sword-like leaves. 35c each, 3 for \$1.00.



**Variegated Plume Grass** Quite ornamental and plumes may be cut for all-winter bouquets in the house. Clumps 75c each, 3 for \$2.00.

## Peonies *Queen of Perennials*

Price all Peony Roots 80c; 3 for \$2.25 by express.

- Festiva Maxima** The finest white—center flecked crimson.  
**Mons Jules Eli** Light rose pink, immense flower, double crown.  
**Edulis Superba** This is the first good early deep pink.  
**Felix Crousse** Dazzling ruby red. Late mid-season.

## House Plants

**Everbearing Lemon** American Wonder (Ponderosa) Lemons weighing from one to three pounds and on plants 1 to 2 ft. high, as house plants in pots. Glossy green leaves and attractive waxen blossoms. Price pot plants 90c each, 3 for \$2.50.

**Dwarf Orange** Lovely compact dwarf Oranges. One of the most novel pot plants. True fragrant Orange blossoms and abundant bright oranges hanging on the bush like balls of gold months after they are ripe. Bloom and bear when quite small. Price pot plants 90c each, 3 for \$2.50.



## Scarff's Hardy Phlox

Starting to bloom in midsummer they carry loads of the most brilliant color far into the Fall.

- Caroline Vandenberg** Lilac blue.  
**Daily Sketch** Salmon pink, crimson eye.  
**Harvest Fire** Brilliant Orange Salmon.  
**Mary Louise** Best pure large snow-white.  
**Salmon Glow** Flame pink with salmon.  
**San Antonio** Carmine red.

Price above varieties 40c each; 5 for \$1.90; 10 for \$3.00 postpaid.

## GIGANTIC IRIS

All Iris Varieties 35c ea.; 5 for \$1.40; 10 for \$2.50 postpaid

- Ambassador** Late—Giant in flower stalk—Blossoms large, lavender and maroon purple with orange red beard.  
**Coronation** Deep rich buttercup yellow—Finest of yellow Iris.  
**Lent A. Williamson** Glistening lavender violet with a golden throat. Profuse bloomer. A true aristocrat  
**Mildred Presby** White with royal wine falls—a beautiful Iris with plenty of style.  
**Moonlight** Pearly white as if bathed in the moonlight, contrasted with golden yellow stamens.  
**Pioneer** Rich reddish purple—early and very free blooming.  
**Seminole** Best red type—an outstanding Iris that should be in every border planting.  
**Wedgewood** Large clean Wedgewood blue of excellent form and substance.



Beautiful "Moonlight" Iris

# 1948 OHIO CERTIFIED 1948

## SIARRE'S HYBRID SEED CORN

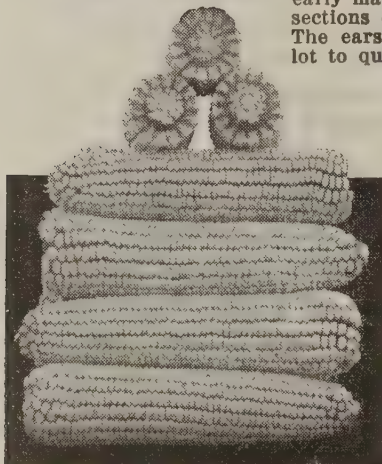
**Grown-Detasseled-Dried-Shelled-Graded—All Under Personal Supervision**



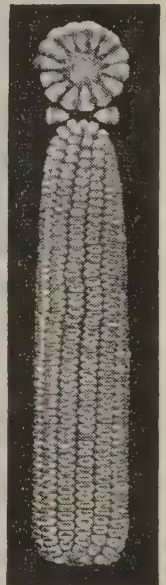
Ear of M34



Ear of 3218



Ears of Ohio K35



K24



Stalk M15

**OHIO M15** Adapted especially for from north central to northern Ohio. This Hybrid is a favorite for short seasons, maturing in around 90 days. The stalks are medium tall and are very resistant to lodging. The ears are of medium size with 14 to 18 rows of medium deep grains. This Hybrid will produce an abundance of early corn and we feel it has a very definite and permanent place in our farming program. Prices on last Hybrid page.

**OHIO M34** **EARLY—DEEP GRAIN—HEAVY YIELD.** This early maturing hybrid is one of the heaviest yielders of its season. The plants are dark green in color and hold their greenness well, giving an appearance of lateness even though the ears are well matured. The ears are medium sized with very deep kernels. Plants are highly resistant to blight. An excellent kind to use for hogging off or for early feed throughout central and southern Ohio. Do not overlook this early Hybrid as it has proven most valuable the last few years to use where you want to pick and sow wheat at the proper time. Prices on last Hybrid page.

**OHIO 3218** **HEAVY YIELD — DISEASE RESISTANT — MEDIUM STALK.** This new Hybrid which we offered last season has by far exceeded our expectations. Wherever produced it yielded unusually heavy, much more corn than most other Hybrids of the W class in which it belongs. It seemingly is the most outstanding medium Hybrid yet introduced. It produces large ears with grains of good depth and fairly soft texture. The stalk is medium size with ears placed from 4 to 5 feet high. The fodder has many large blades. It shows fair to good resistance to corn borer and blight. All of these fine characteristics make this hybrid stand out by itself and we urge you to try part of your acreage. It will pay you good dividends. Price 50¢ per bushel higher for all grades than those printed on last Hybrid page.

**OHIO K35** **AN EARLY HEAVY YIELDING HYBRID.** Maturing earlier than Iowa 939 and just a little later than M34 makes this Hybrid ideal to use as the early part of your crop. Its stalks are medium in height and the excellent root system makes it withstand lodging exceptionally well. The ears, as per the cut, are medium length with grains medium large and quite deep. If you prefer corn not quite so hard this Hybrid will please you. Prices on last Hybrid page.

**OHIO K24** Most dependable and highest yielder of the K group. This early maturing Hybrid has a very definite place in most sections of Ohio where corn is picked and wheat sown. The ears are large and cob small which contributes a lot to quick drying for early cribbing. The kernels are large and richly colored. The plants are of medium height. Very leafy, and quite dark green, with ears placed around 4 ft. high. A good Hybrid to use if you want to use the corn binder in harvesting. Ears do not drop off easily. The stalk is quite corn borer resistant. We have increased our production of K24 each season. Prices on last Hybrid page.

### Clinton Oats for 1948

We believe without fear of contradiction this variety is the best yet introduced in Ohio. Our yields this year were heavy, from 60 to 80 bushels per acre of good quality grain, weighing 34 to 40 pounds. It is medium early and the most disease resistant variety we have ever grown. We will have our Clinton Oats ready for distribution any time after January 1, 1948, and offer Certified seed at \$3.00 per bushel.

**W. N. Scarff's Sons, New Carlisle, Ohio**



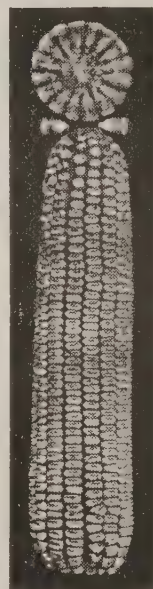
## OHIO W10--Midseason Maturity

Heavy Yielder — Good Quality Corn

This Hybrid is way above the average in performance, yield, and in fact most all desirable characteristics. The plants are dark green in color, carry an abundance of leaves and are of medium height. W10 is most desirable in that it possesses a very vigorous root system which almost insures it from lodging and in addition resists blight, stalk rot and corn borer. The kernels are large, well dented and medium soft for feeding. It matures slightly later than W36 and earlier than C38. It forms an excellent combination for succession of maturity with either of the above. Price on last Hybrid page.



W10



W46

**IOWA 306** One of the best Iowa Hybrids. Similar to Iowa 939 with most of its faults corrected. No serious ear dropping. Produces good fodder. The ear is of good size with soft deep kernels. The yield averages slightly above Iowa 939 with maturity about the same. We have hesitated to grow any more Iowa Hybrids because of the excellent kinds now in Ohio, however, Iowa 306 seems to have many outstanding characteristics our corn growers are demanding. We are sure you will like this Hybrid for early midseason maturity. Price on last Hybrid page.

**OHIO W46** A Hybrid slightly later than K24 and ripens earlier than Iowa 939. It is good in both yield and performance. The plant is of medium height, blades dark green with ears placed 4 to 5 feet high depending on fertility of the soil. The kernels are well dented and the cob is small. Its ear has 16 to 18 rows of richly colored corn. This Hybrid is adapted over a wide area and has been most satisfactory. Price on last Hybrid page.

**IOWA 939 THE OLD FAVORITE.** Grown more extensively and with more dependable average good yields of fine quality corn than any other Hybrid in Ohio. It has a medium size stalk naturally stiff and erect with ears placed



The Old Favorite—Iowa 939

medium height. Matures in about 100 to 110 days. It has long, quite rough, reddish-cast ears with small cob. Iowa 939 is very disease resistant and is desired especially in the blight areas. It is the one most dependable, year in and year out, to always come through with a crop. We offer either yellow or red seed. Price on last Hybrid page.



Deep Grain — Iowa 306 — Small Cob

**OHIO C12** A hybrid with all the fine characteristics of U.S. 13 except that it matures earlier. It is quite resistant to corn borer and is a very high yielder. The ears are long, grains soft. Cob, medium small which makes drying much more rapid than most kinds. C12 is very dependable and we are producing more of this kind each year. Don't overlook this hybrid in your selection. Price on last Hybrid page.

### Can furnish older Hybrids—Ohio W17—IND 608C—C88

The above Hybrids are being produced only in a very small acreage in Ohio. We will gladly make every effort to secure seed for you if you desire it. Prices on last Hybrid page. Medium Flat Grade only.

## OHIO W36

High Yield—Resists Blight and Corn Borer

This outstanding Hybrid produces a medium size stalk with a large 16-18 rowed ear placed just right for either hand husking or for gathering with the picker. The kernels are large and medium soft. It matures in around 100 days. Our neighbor is a feeder of several hundred cattle each year and has grown W36 since it was first introduced. He says it is the best hybrid he has ever grown and fed. Many farmers feeding all kinds of live stock are telling us the same story. We do not hesitate to recommend this Hybrid to you very highly. Plant W36 with any other Hybrid of its season and we will be satisfied to let its performance speak for itself. Prices on last Hybrid page.



W36 Produces Fine Quality Ears

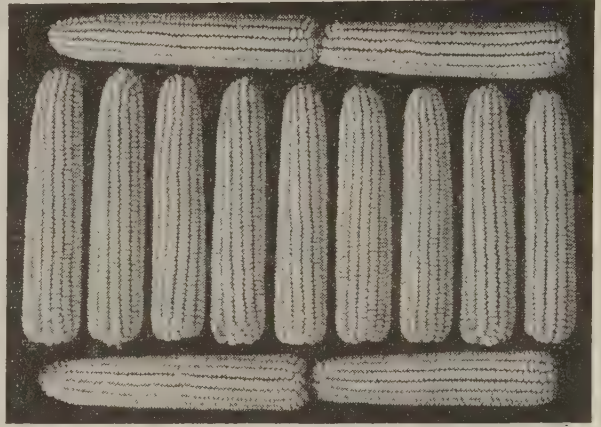
We offer a full line of Farm seed including Clovers, Alfalfas, etc. Write us for firm quotations.

# OHIO C38

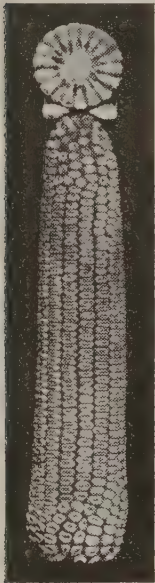
**"Medium Season Maturity—  
Heavy Yield—Blight and  
Corn Borer Resistant—Grain  
Large with Soft Texture"**

Ohio C38 is without doubt the most popular of the medium season Hybrids. The plant is most vigorous in growth which, when small, makes it more resistant to insect pests that many times destroy the corn plants completely. It produces large, straight-rowed, well-filled ears of corn with kernels quite deep and soft. It has a short shank and is well adapted for machinery harvesting. It matures in around 110-115 days and is being produced over a wide area of Ohio and states surrounding.

These outstanding qualities have made the increase in acreage planted to C38 very remarkable. Price on last Hybrid page.



C38 Ears are Outstanding



IOWA 4059

## IOWA 4059

An ideal picker Hybrid—Medium season maturity and holds a most remarkable record for ideal performance and heavy yield here in Ohio. This Hybrid is slightly later than Iowa 939. Maturing at practically same season as C38 and strangely, too, the yield records are almost identical. It produces a good healthy stalk, blight resistant and leaves quite dark green in color. The ears are not rough like Iowa 939. This Hybrid is an excellent corn for mechanical harvesting and because of its increasing popularity we have increased our acreage again this year. Try Ia. 4059 with C38 and take your choice. Price on last Hybrid page.

## OHIO 3157

For central and southern Ohio this early maturing Hybrid has been exceedingly satisfactory. It yields well. Produces large well formed ears with good sized soft texture kernels. The fodder is of medium height and is most satisfactory for early picking. Price on last Hybrid page.

## OHIO L94

The Ideal Silage Hybrid—Heavy Grain Yield—High Carotene Content. This combination grain and silage Hybrid is without question the most profitable to produce wherever you want to fill the silo with high food value silage. Carotene used in all grain feeds is most expensive to buy and why purchase it when you can produce it. This combination of heavy grain yield and carotene makes L94 silage the best. The ears are large with long deep grains. The shank is short and holds the ear tight to the stalk, making it most desirable for the corn binder and easy to feed in the ensilage cutter. Will mature same season as U. S. 13 and will produce heavy crop for cribbing. Price on last Hybrid page.

## WHITE HYBRID IND. 750

We have replaced Ky. 203 with Ind. 750 because of its much superior root system which makes it more resistant to lodging. It is a very heavy yielder in its adaptation of the fertile areas of the southern half of Ohio. It has outstanding U. S. 13 consistency. The stalk is medium tall with good-sized ears and deep grains. Price, all grades, \$1.00 per bushel higher than on last hybrid page.

## U.S. 379

This Hybrid matures 3 to 5 days later than U.S. 13 and has yielded 10% more. Its stalk is medium large with an abundance of leaves. The ears are average to long with 16-20 rows of very deep yellow kernels. It is decidedly more resistant to leaf blight than U.S. 13. Especially recommended for very fertile soil in the southern half of Ohio. Prices as quoted on last hybrid page.

## OHIO L86

is one of the most outstanding three-way crosses. Its exceptionally heavy yields and good performance have created such a demand that we felt it our duty to offer it again this year. Price \$1.00 per bushel higher than on last Hybrid page.

### — OPEN POLLINATED SEED CORN —

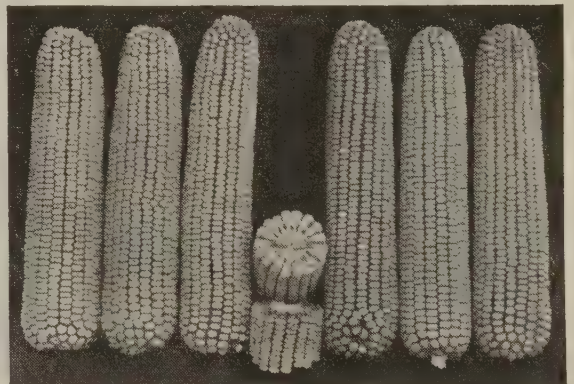
We offer two of the most popular varieties of open pollinated seed corn. "Blue Clarage" an early kind with high sugar content. "Scarff's Cash," an early, mid-season, high-yielding variety which has proven most satisfactory. Price of either "Blue Clarage" or "Cash" per bu. \$5.00; 1/2 bu. \$3.00.

## U.S. 13

Although this Hybrid was one of the very first kinds to be introduced it is still without doubt the most popular of its maturity class. In comparison with L Hybrids from other states as well as from Ohio it still ranks the best. When many fields this past year were suffering heavily from blights, U.S. 13 was only slightly affected and went on to mature both the stalk and grain normally. It produces large ears, deep medium starchy soft grains, a sturdy stalk which stands erect and is very disease resistant. The fine quality, rich-looking ears have 20-22 rows of good deep medium soft grains of high feeding value. While this hybrid has been listed as one of the later kinds, it is maturing easily in the C area, especially on the darker soils. Prices on last hybrid page.

### WE PREPAY FREIGHT ON HYBRID CORN

Many of our customers like to come directly to our warehouse to get their Hybrid Seed Corn. If you cannot do this WE WILL PREPAY THE FREIGHT TO YOUR STATION on all Hybrid Corn shipped to points in Ohio, Indiana, Kentucky, Pennsylvania and West Virginia.



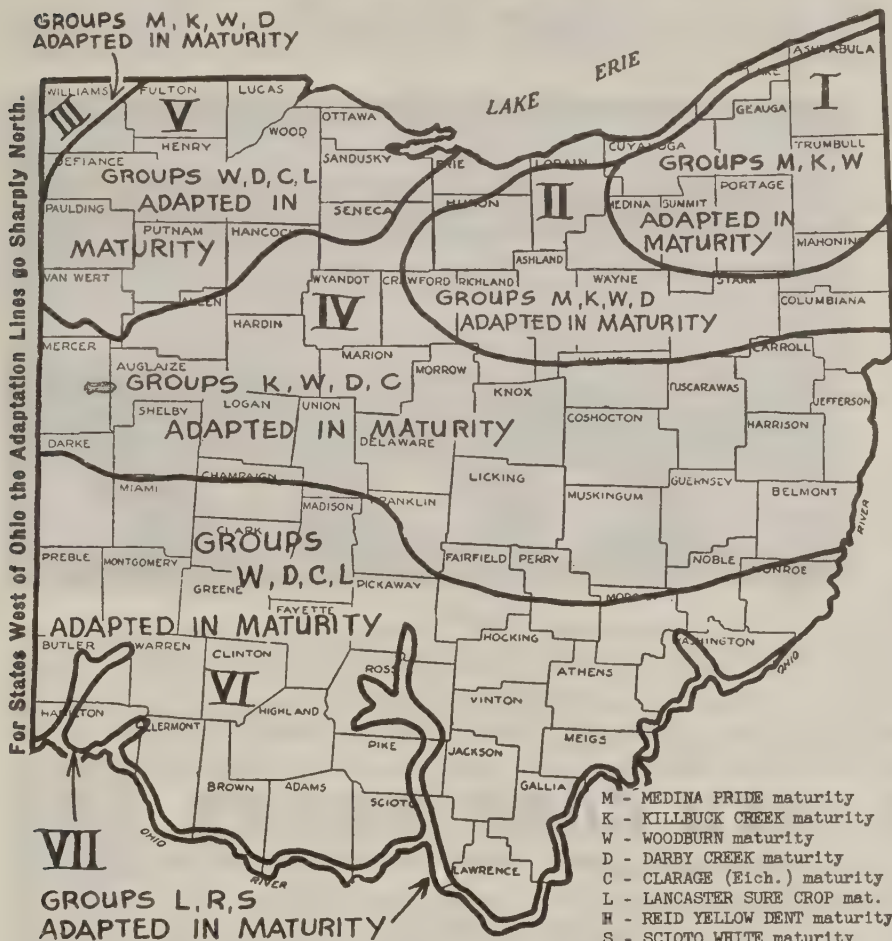
U. S. 13 The Standard for Ohio

# W. N. SCARFF'S SONS, NEW CARLISLE, OHIO

ADAPTATION AREAS FOR CORN HYBRIDS IN OHIO - Revised, 1941

By the Agricultural Extension Service of The Ohio State University, the Ohio Agricultural Experiment Station, and the United States Department of Agriculture

1. On the map at the left, find the area in which the farm is located and note the maturity groups (letters) adapted to the area.
2. Select the maturity group (letters), or groups, best suited to the farm needs. On the map, the first letter in each set of 3 or 4 represents hybrids adapted in maturity to average upland soils. The latest hybrids recommended, represented by the last letter in each set, are adapted only for early planting on highly productive soils. Others are correspondingly intermediate.
3. When the proper maturity group or groups have been selected, refer below for hybrids in these groups.



## Build Your Soil for Corn With Legumes

● Official (not individual) Ohio tests prove Ohio Hybrids yield more and perform better in the same plots than do other higher priced Hybrids. Why pay more when official proof definitely shows you get less for your money? **Plant only Ohio Hybrids.**

### MATURITY CLASSIFICATIONS OF OHIO HYBRIDS

Maturity Group M (Medina Pride Maturity)  
Ohio M15 — Ohio M34

Maturity Group C (Clarage Maturity)  
Ohio C38 — Iowa 4059 — C12

Maturity Group K (Slightly earlier than Woodburn)  
Ohio K24 — Ohio K23 — Ohio K35

Maturity Group L (Lancaster Sure Crop Maturity)  
Ohio L94 — U. S. 13 — L86 — Ind. 750 — U. S. 379

For your Garden

"HYBRID POP CORN"

Maturity Group W (Woodburn Maturity)

Ohio W46 — Ohio W17 —  
Ohio W36 — Iowa 939 —  
Ohio W10 — Ind. 608C  
Iowa 306 — Ohio 3218  
Ohio 3157

For your Garden

"HYBRID SWEET CORN"

### SEMESAN JR. FOR FIELD, SWEET AND POP CORN

New Improved Semesan Jr. should help to give you better stands. It generally protects the seed from decaying and the seedlings from blights and root rots caused by such fungi as Diplodia and Gibberella. In most of the Iowa and Illinois tests reported use of Semesan Jr. treatment of the seed increased the stand over untreated seed by 5 to 15%.

Use 1½ oz. per bushel of seed thus costing only around 2c per acre. Price 1½-oz. packet 15c; 12-oz. can 75c.

### HYBRID SEED CORN GUARANTEE

We guarantee to the first buyer that the Hybrid seed, to which the certified tag is attached, is part of the lot of seed actually inspected in the crossing plot and in storage by representatives of the Ohio Seed Improvement Association and found by them to conform to the published standards of the Association for Certified Commercial Hybrid Seed Corn. We also guarantee this seed to conform to the per cent germination required, provided the seed is received intact in the original package and claim is made within 20 days of receipt. Since conditions beyond the producer's control affect germination and growth in the field, no guarantee, expressed or implied, is made concerning the quantity or condition of the crop grown from this seed. Our liability in all instances is limited to the purchase price of the seed.

### Open Pollinated Seed Corn

There is still a heavy demand for good open varieties. We have selected two kinds that have been most satisfactory and for which there has been the greatest demand. "Blue Clarage," an early kind with high sugar content and with grains of soft texture for early hogging down and for general crop a heavy yielder. "Scarff's Cash." This has been our most popular variety over a long period of time. It is medium early, has deep soft kernels. Yields better for us than the old kinds. Woodburn or Clarage. We recommend this to you. Price for either "Blue Clarage" or "Cash," per bu. \$5.00; ½ bu. \$3.00.

# HYBRID POP CORN

DEVELOPED BY GLENN M. SMITH

Agricultural Experiment Station, Purdue University

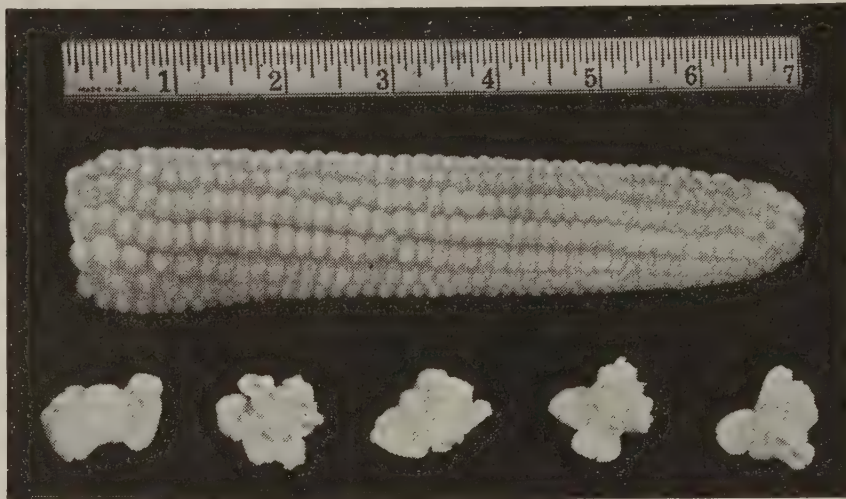
We are offering two of the outstanding Hybrids developed by Purdue University. Both are very definitely superior in every way to open pollinated kinds and we do not hesitate to even "urge" you to plant Hybrid seed if you grow pop corn in your garden or commercially.

## PURDUE 38

We do not believe you can equal this Hybrid for the commercial grower. The quality is much superior to open pollinated pop corn but not quite equal to Purdue 31. The yield as shown by the table below exceeds all other pop corn Hybrids we know anything about. We popped Purdue 38 in our home all last year. The grains were abnormally large, the flavor was wonderful. Price below.

**Performance Record from Purdue University—3-year average acre yield ear corn**

Purdue 38.....4605 lbs.  
South American.....2450 lbs.



Purdue 38

## PURDUE 31

This is the pop corn hybrid that is most satisfactory where quality is desired. For the home garden it is wonderful. It pops good sized grains with practically no hull and the most delicious flavor. It is earlier maturing than P38 and is an excellent yielder. If you have customers or friends wanting the best in pop corn, produce P31. It is a must for your garden. Prices for either Purdue 38 or Purdue 31—\$1.00 per lb.; 60c per 1/2 lb.; 35c per 1/4 lb.; 20 per trial packet. Parcel Post Prepaid. By express or freight, not prepaid, 75c per lb.; 10-lb. lots or over 65c per lb.; 25-lb. lots or over 60c per lb. Write for prices on larger lots.

## HYBRID SEED CORN PRICES

Our Hybrid Seed Corn is graded over the most modern machinery for properly sizing corn kernels. ALL SEED IS TREATED WITH SPERGON.

**LARGE FLAT GRADE** These are the largest grains on the ear. They will in most all cases plant through your regular Planter Plates. We take a great deal of care to make this a very uniform grade of seed for the most critical growers who want only these large kernels. Price \$9.50 per bu.

**MEDIUM FLAT GRADE** These grains are standard and only slightly smaller than the large grade described above. They are most regular in size and will in practically all cases plant through regular furnished Planter Plates. Medium kernels will plant two to three acres more than the large flats. More economical and most valuable grains on the ear. Price \$9.50 per bu.

**SMALL FLAT GRADE** This is the most economical grade of seed to plant. We discard all of the very small grains and use only kernels that will, under any soil condition, have plenty of plant food to start the young corn plant. These grains are slightly smaller than the medium flats and are graded to plant regular and in many cases through your regular plates. This, however, will depend on the Hybrid and always plates should be checked very carefully before planting. Price \$8.50 per bu.

**THICK FLAT GRADE** The grains in this grade are considered by many growers to carry more vitality than any other kernels on the ear. They are of normal length and not over 2/64 inch thicker than the regular large flat grains. They do require special plates for your planter and will plant just as regular with these special plates as any of the flat grades will plant. It is merely a matter of planter plates and we will help you with them. See our Planter Plate Service below. Price \$7.00 per bu.

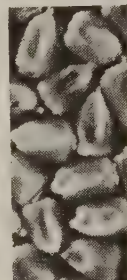
**ROUND GRAINS** These kernels run over the 15/64 inch slot in our graders and as the name implies are round in shape. We discard the small round kernels then run the larger grains through our graders again into a medium round grade and large round grade. These grains require special Planter Plates and can be planted very regular. They are without question the most economical grades to plant and are of course cheaper. Price \$7.00 per bu.

## Scarff's Planter Plate Service

We have regular Planters set up in our Seed House and will gladly recommend the proper plates for use in the newer type machines, John Deere, McCormick Deering and Black Hawk. All of our large and medium flat grades are as nearly as possible graded so they will plant through the regular plates furnished with the planter. Do not hesitate to ask about this service. The thick flat grains, round grains and small flat grains in most cases require plates other than those furnished with the planter. Let us help you plant your corn by helping you with proper plates.

### WE PREPAY FREIGHT ON HYBRID CORN

Many of our customers like to come directly to our warehouse to get their Hybrid Seed Corn. If you cannot do this WE WILL PREPAY THE FREIGHT TO YOUR STATION on all Hybrid Corn shipped to points in Ohio, Indiana, Kentucky, Pennsylvania and West Virginia.



Medium Flat



Small Flat



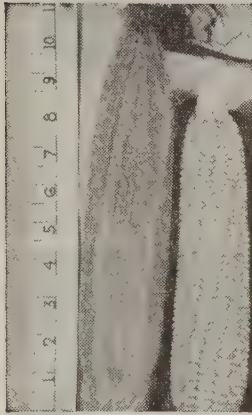
Round

# SCARFF'S Hybrid Sweet Corn

Excellent Quality -- Finest Flavor

## OHIOGOLD 1

Developed by Agronomy Dept., Ohio State University  
Roasting Ears of Most Delicious Flavor



Ohiogold 1

Ohiogold 1 produces a rugged stalk. The plants are tall and about 6 days later in maturity than those of Golden Cross Bantam. Yields of Ohiogold 1 have exceeded those of Golden Cross Bantam by about 25%. See Table below. The ears are long and carry 12-14 rows of medium yellow kernels. Quality excellent. Gardeners have long wanted the combination of high yield and fine flavor. Certainly Ohiogold 1 has given them all they have asked for. Don't fail to include some of this Hybrid seed with your order. Price of Ohiogold 1—70c per lb., 40c per 1/2 lb., Trial packet 25c postpaid; Not prepaid, 10 lbs. or over 55c per lb., 25 lbs. or over 50c per lb.

| Performance of Sweet Corn Hybrids at Columbus           | Pounds good ears per acre 2 yr. av. | Days to Roasting ears | Number of Rows |
|---------------------------------------------------------|-------------------------------------|-----------------------|----------------|
| Golden Cross Bantam—the standard midseason variety..... | 3751                                | 83                    | 10-12          |
| Ohiogold 1—late .....                                   | 4498                                | 88                    | 12-16          |

Ohiogold 1 should be included in every home or commercial garden.

## New—GEM—New

This New Early Yellow Hybrid matures in 84-85 days, grows very vigorous stalk and produces nice large roasting ears with wonderful sweet flavor. Remains tender and sweet on the stalk longer than most other kinds. The ear has 14-16 rows and is covered tightly with husk which increases its resistance to smut and ear worms.

We are sure you will like this New Hybrid for either your garden or for early commercial roasting ears. Price—70c per lb., 40c per 1/2 lb.; trial packets 25c postpaid. Not prepaid, per lb. 60c; 5 lbs. or over 55c per lb.; 10 lbs. or over 50c; 100-lb. lots, per lb., 45c.

**SPANCROSS** Earliest of all Yellow Hybrids. Very wilt resistant and a heavy yielder of wonderful quality Roasting Ears. This new Hybrid should be in every home garden and is without question the best and heaviest yielder of the very earliest season. Matures to roasting ear stage in approximately 63 days. Try it. Price—50c per lb., 30c per 1/2 lb., postpaid. Not prepaid, per lb. 40c, 5 lbs. or over 37c, 10 lbs. or over 35c, 100-lb. lots, per lb., 32c.

**MARCCROSS** This Hybrid matures a few days later than Spancross (65 to 67 days). It has a slightly larger stalk, is very cold and disease resistant, which allows very early planting. The flavor is delicious. The ears are medium size with rows straight and kernels fairly deep. An excellent and very profitable Hybrid. Price—50c per lb., 30c per 1/2 lb., postpaid. Not prepaid, per lb. 40c, 5 lbs. or over, 37c per lb. 10 lbs. or over, 35c. 100 lbs., per lb. 32c.

**CARMELCROSS** The outstanding Early Hybrid. Matures in approximately 70 days, just a few days later than Marcross. It is a heavy yielder of uniform ears of good size. The flavor is luscious and we do not hesitate to recommend Carmelcross in every way. It should be in every home or commercial garden without fail and our best proof of this statement is the repeat orders for Carmelcross we have in our files. Price—50c per lb., 30c per 1/2 lb., postpaid. Not prepaid, per lb. 40c, 5 lbs. or over 37c, 10 lbs. or over 35c, 100-lb. lots, per lb. 32c.

**LINCOLN** This Hybrid matures in about 75 days or just between Carmelcross and Golden Cross Bantam. The ear is quite large and grain very sweet with tender hull. It was in the "All American" trials in 1941 and awarded "All American Bronze Medal 1942." Price—50c per lb., 30c per 1/2 lb., postpaid. Not prepaid, per lb. 40c, 5 lbs. or over 37c, 10 lbs. or over 35c, 100-lb. lots per lb. 32c.

## Delicious—PURGOLD—Delicious

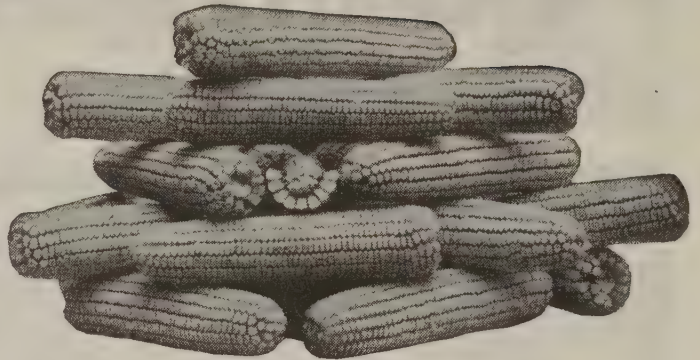
Ideal for your home garden. Produces the most delicious of all roasting ears, according to many who are now growing it. Adapted to freezing, which is most important to those having lockers. Price—50c per lb., 30c per 1/2 lb., postpaid. Not prepaid, per lb. 40c, 5 lbs. or over 37c, 10 lbs. or over 35c, 100-lb. lots, per lb. 32c.

**GOLDEN CROSS BANTAM** The standard Hybrid Sweet Corn—Developed by Glenn M. Smith of Purdue University, and introduced by the U. S. Dept. of Agriculture and the Purdue Experiment Station. This corn is outstanding because of its resistance to Stewart's disease or bacterial wilt and because of this factor can be planted exceptionally early and you can be certain of a good crop. It is extremely prolific and produces high quality Sweet corn for either roasting ears or canning purposes. Most large Canning Companies are using Golden Cross Bantam exclusively for their yellow corn. Matures in about 78 days. Today no garden is complete without Golden Cross Bantam. Price per lb. postpaid 50c per lb.; 30c per 1/2 lb. Not prepaid, per lb. 40c; 5 lbs. or over, per lb. 37c; 10 lbs. or over, 35c per lb.; 100-lb. lots, per lb., 32c.

**IMPROVED GOLDEN CROSS BANTAM** A hybrid of the same wonderful quality as its name-sake and was introduced by Mr. Smith to eventually replace Golden Cross. The ears are larger, yield is much heavier without any sacrifice in flavor. Stalks are larger and very vigorous. For the commercial grower or home garden. Price—70c per lb., 40c per 1/2 lb.; trial packets 25c postpaid. Not prepaid, per lb. 60c; 5 lbs. or over 55c per lb.; 10 lbs. or over 50c; 100-lb. lots, per lb., 45c.

**STOWELL'S EVERGREEN HYBRID** This white Hybrid resembles Stowell's Evergreen. The stalk and the ears are large and it matures the same season. It is, however, a heavier yielder of more uniform ears of sweeter flavor. Highly recommended for the Home or the Commercial Garden. Price—75c per lb.; 40c per 1/2 lb., postpaid. Not prepaid, per lb., 50c; 5 lbs. or over, per lb., 57c; 10 lbs. or over, 55c per lb.

— CASH —  
BEST EARLY YELLOW



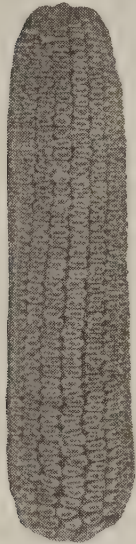
Average Ears of Cash Corn

**Good Yield — Soft Texture**  
Deep grain—small cob—fine for hogging down—We cannot emphasize too strongly the value of this variety of corn. It is the highest yielding early kind we have ever grown. Has strong, healthy stalk, having many blades of deep green foliage. We have planted as late as June 15, and secured a good crop. Generally speaking, the early planting always gives the greatest returns. The ears are medium to large with exceptional food value. The cobs are small and deep red. Corn Prices Below.

**BLUE CLARAGE**

Especially early for hogging down. Matures 85-95 days. This is a general favorite of the very early varieties. Produces heavy yield of good well-filled ears. Grains are deep

and very broad, color is blue, hence the name. Many growers use and sell it as sweet corn as it is white until it begins to dent. When thrown to stock along with yellow corn they will eat the blue first. Has very high feeding value. The stalks are of medium height and carry heavy foliage. It is a very vigorous grower and can be planted earlier than most kinds. Feeders generally pay a premium for Blue Clarage. Seed Corn prices below.



Blue Clarage

good resistance to corn borer and blight. All of these fine characteristics make this hybrid stand out by itself and we urge you to try part of your acreage. It will pay you good dividends. Price 50c per bushel higher for all grades than those printed on Hybrid page 40.

**Open Pollinated  
SEED CORN PRICES**

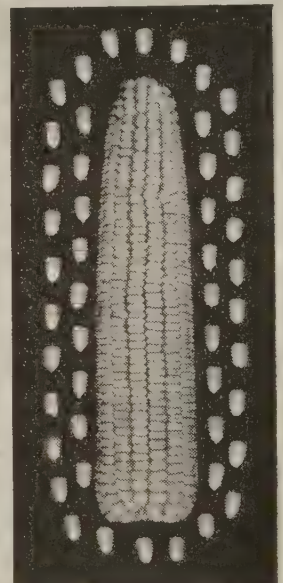
All Seed Carefully Shelled and Graded

Per Bushel....\$5.00 Per 1/2 Bushel....\$2.75 Per 1/4 Bushel....\$1.50

WE CALL TO YOUR SPECIAL ATTENTION

**NEW HYBRID — OHIO 3218**

We offer this new hybrid because we feel definitely it is better than most all hybrids of the W maturity class. It produces large ears with grains of good depth and fairly soft texture. The stalk is medium size with ears placed from 4 to 5 feet high. The fodder has many large blades. It shows fair to



Ear 3218

**LADINO CLOVER**

The plant of this comparatively new clover is larger than the white variety and has produced a remarkably heavy growth when sown 1 lb. per acre in regular grass or pasture mixtures. It is the ideal clover to thicken old pastures. A wonderful grass for the chicken range. Seed is cheaper this year and as it is very small, resembling white clover, Ladino Clover is a most profitable investment. Include it in your grass mixture this year. Price per lb., \$2.75; 10 lb. lots or over, \$2.70.

**BARLEY FOR SPRING SOWING**

**Velvet Barley** Long Awns but smooth as velvet—Yields as heavy or heavier than Bearded Varieties—Disease Resistant. Six Rows—Stiff Straw that will not lodge easily. Spring barley has long been recognized as ideal nurse crop for Alfalfa. It shades very little and gives the young alfalfa plant just the right protection. Price per bu., \$3.75.



**Spring Bearded Barley** This barley is used more extensively than any other kind and very satisfactory with combines. Price per bu., \$3.50.

TREAT BARLEY WITH CERESAN

**Fall Barley** This variety has come quickly into prominence principally because of the high yields it has been making the last few years. Yields of 60 to 80 bushels are not uncommon. Chinch bugs have not bothered this kind as it ripens too early for them. It should be sown latter part of September, and will ripen last of June. Write us this summer for prices.

All Seed Prices Subject to Change Without Notice

**OPEN POLLINATED SWEET CORN**

**Golden Bantam** This variety is probably the earliest, hardiest and most popular of the early yellow kinds. Generally it can be planted with safety a week earlier than other kinds. Our seed is northern grown and extra nice.

**Early Evergreen** An early favorite. Kernels are deep, very white, sweet and tender. One of the most desirable of the early kinds for the home garden as well as for commercial use.

**Whipple's Early White** Recognized as most popular early white variety. Ripens about same season as Golden Bantam. Ears are 8-9 inches long and have 16-18 rows of exceptionally white sweet grains. One of the best for either home gardens or market.

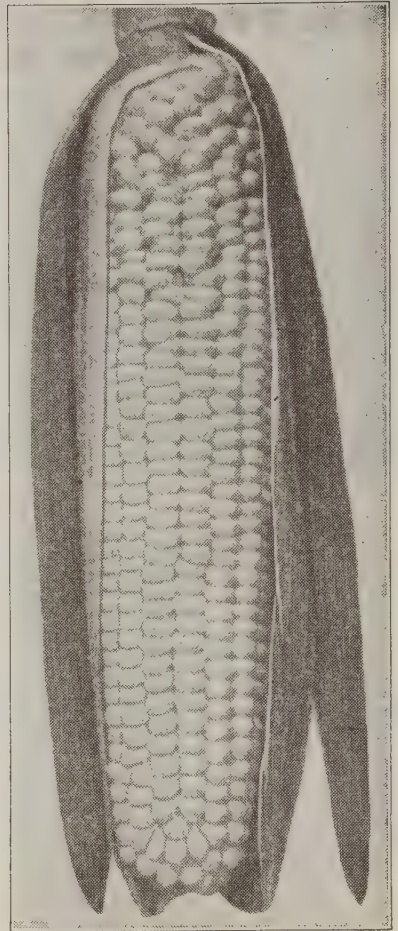
**Whipple's Early Yellow** The description of this variety is identical with Whipple's White above, except the corn is yellow. For those desiring the yellow corn we recommend it to you very highly. It is a very prolific yielder of fine flavored corn.

**Howling Mob** A popular, very prolific second early kind. Produces medium large ears, 12 to 16 rows, follows Early Evergreen in maturing and is used extensively for market purposes.

**Country Gentleman** Among the very best of all mid-season varieties for the home garden because of its tenderness, sweetness and very delicious flavor. Ears are 7-8 inches long and grains are zigzag or staggered.

**Stowell's Evergreen** The standard of the later kinds. Especially desirable for the commercial growers and canners. It is hardy, thrifty, productive and very sweet and tender. Everyone knows the good qualities of Stowell's. Our seed is northern grown and very hardy.

**Prices, Open Pollinated Sweet Corn and Pop Corn Seed, except where otherwise noted, per 1/2 lb., 25c; 1 lb., 40c; 2 lbs. 75c, postpaid; by express, not prepaid, per lb. 30c; 5 lbs. \$1.40; 10 lbs. \$2.25.**



Stowell's Evergreen

**NEW HYBRID POP CORN**

See Page 40

**YIELDS HEAVY—GREATER POPPING EXPANSION**—At last an outstanding heavy yielding large yellow Hybrid popping corn has

been introduced. Not only will you be surprised at the size of the grains but you will be more than pleased at the luscious flavor. There is practically no hull and almost melts in your mouth. Only requires about 5 lbs. per acre and in the average garden 1/2 lb. is plenty for you to plant. Try it. It's swell. Price per 1/2 lb. 60c; per lb. \$1.00, postpaid.



Myers Perfection Pop Corn

**POP CORN OPEN POLLINATED**

**Giant Yellow** South American Pop Corn. Pops exceptionally large yellow grains of delicious flavor. Very popular now in commercial use. Is medium season and a good producer. Price below.

**Myers Perfection** New variety of hull-less pop corn and one of the most delicious of them all. Larger than ordinary, hull-less and will produce twice as many bushels. Although just being introduced, it is replacing most of the older favorites with the commercial poppers wherever it has become known. Try some of this wonderful pop corn. Price below.

**Prices, Open Pollinated Sweet Corn and Pop Corn Seed, except where otherwise noted, per 1/2 lb. 25c; 1 lb. 40c; 2 lbs. 75c, postpaid; by express, not prepaid, per lb. 30c; 5 lbs. \$1.40; 10 lbs \$2.25.**

**New Improved Semesan Jr.**

Treat all your Sweet and Pop Corn with Semesan Jr. Especially the early planted seed should be protected. The cost is nominal and results will surprise you. Under adverse weather conditions a strong seedling will live while a weak plant will die.

**PRICES**

1/2 oz.....\$0 .15    6/4 lb.....\$ 3.75  
12 oz......56    25 lb..... 12.50

1 1/2 ounces treat one bushel of seed



Sweet Corn and Pop Corn should always be treated with Semesan Jr.

## SCARFF'S SOY BEANS FOR OHIO FARMS

# NEW --- LINCOLN --- NEW

HIGH OIL CONTENT — REMARKABLE YIELD



### First Increase Block New Lincoln

The New Lincoln is the result of a natural cross in 1934 of a strain of Mandarin and Manchu at the Illinois Experiment Station. Since that time it has been tested all over the Soy Bean growing area of the United States with highly satisfactory results.

Lincoln matures slightly later than Mingo and same as Dunfield. **Is about a week later than Richland.** The plant grows slightly taller than Mingo or Dunfield and tends to branch considerably when planted thin. The stalk is stiffer than Dunfield, Illini or Mingo but not quite as stiff as Richland.

The Oil content is highest and the quality of oil is the best of any variety yet available. In 21 tests over a 5 year period (1939-43) Lincoln outyielded Richland 5.4 bu., Dunfield 5.1 bu., Illini 4.8 bu., Scioto 4.4 bu.

The Lincoln Soy Bean is generally adapted throughout Ohio, with the possible exception of the Northeastern section where earlier maturing varieties should be grown. In southern Ohio Lincoln will mature sufficiently early to precede wheat when planted early and in rows. This variety should eventually replace Dunfield, Illini, Mandell, Scioto, all of the numerous strains sold as Manchu, and probably most of the Mingo now grown in Ohio. Price Lincoln Soy Beans per bushel \$4.75.

**Bansei Edible Soy Beans, Page 45**

## Richland Soy Beans

### Stiff Stalk—Early Maturity—High Yield

More Richland beans were sown in our central area than any other kind. If sown at normal season you can easily combine and sow wheat. Their stalk is stiffer than any other kind we know and we had yields of 40 bushels per acre. As a result more Richland will be sown in 1947 than any other kind. Our seed was harvested, cleaned and bagged early and is the best quality. Richland has a high oil content and you should sow pure seed. Price, \$4.75 per bushel.

### INOCULATE SOY BEANS

No other investment pays such high dividends as the treatment of seed beans with Nitragin just before planting. The plants show increased vigor and eventually a higher yield. The cut on page 45 is very typical. With the extreme high market value of Soy Beans and the low cost of inoculation, the difference generally pays for your seed many times over. Price (Culture S) Soy Bean inoculation: Sizes—2 bu., 30c; 5 bu., 55c; 25 bu. can, \$2.50; 30 bu. carton, \$3.25.

### Wilson

A medium sized black bean of unusual qualities, wonderful hay bean, grows very prolific, with many leaves. Is heavy yielder of beans and a variety we recommend very strongly. Plant a few of these beans in the corn you put in the silo. Price below.

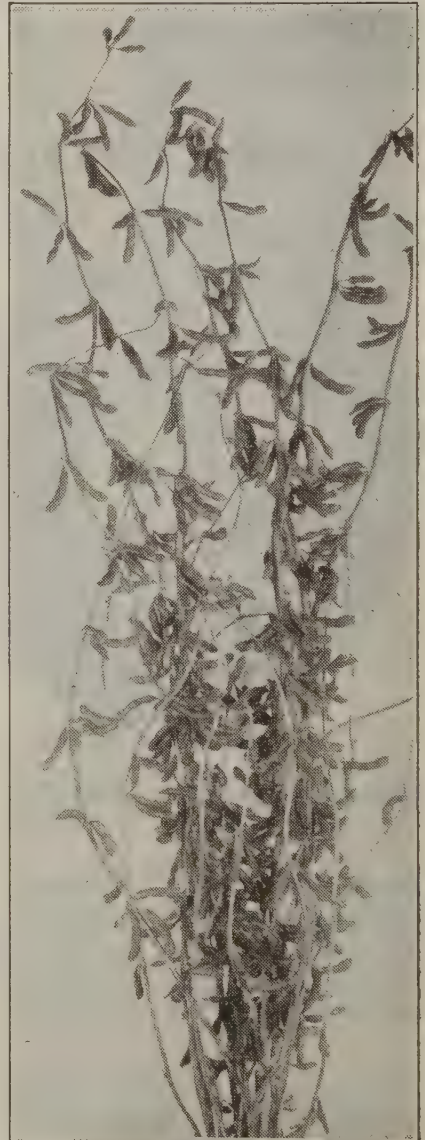
### Virginia

A light brown vining type variety that is very popular for either hay or planting with corn for ensilage; generally too late for seed. Price below.

Prices, Lincoln Soy Beans \$4.75 per bushel; Richland \$4.75 per bushel; Wilson and Virginia \$5.25 per bushel.

## We Offer for 1949 Seeding HAWKEYE SOY BEANS

We are producing this year quite a large acreage of this new early heavy yielding, stiff stalk soy bean that has been making such unusual yields the last year or two in all performance tests. Orders will be filled in order received and of course subject to your confirmation after price is established.



Typical Stalk of Soy Beans



# EARLYANA SOYBEANS

MATURES EARLY ENOUGH FOR WHEAT IN NORTERN OHIO

This new early kind matures about four days ahead of Richland and nine days earlier than Mingo. The plants are slightly taller than Richland and a little more susceptible to lodging but much more resistant than Mingo. This variety has been very satisfactory wherever grown the last few years and we feel it has a very definite place where wheat is to be sown or for one reason or another the beans should be harvested early. Price, \$4.75 per bushel.



## ● BANSEI ●

### Edible Soy Beans

This is a large-seeded early variety used as a green shell bean as well as for ripe edible beans. Its plants are erect and compact in habit of growth and of medium height. It bears pods profusely and under adverse conditions it produces more pods per plant than most other edible varieties. Eating quality is good. Has a slight tendency to shatter.

This variety is one of the best and we recommend it to you very highly. Try some in your garden or truck patch this year. Price, postpaid, 30c per lb. By express, not prepaid, 25c per lb.; 10-lb. lots, 23c per lb.; 50-lb. lots or over, 20c per lb.

### INOCULATION PAYS WELL

See back Cover Page



SOYBEAN FIELD near Spencer, Ohio

One drill row thru center not inoculated. Remainder of field inoculated with NITRAGIN.

**Sudan Grass** Produces an immense yield of nutritious hay. Can be sown as late as July. Sometimes sown with Soy Beans with splendid results. It is easy to cure and is relished by stock. A small patch will make a surprising yield. Price 15c per lb.; \$12.50 per 100 lbs.

**Sweet Sudan** This variety is more palatable and contains more sugar than the ordinary Sudan. Would suggest you try this variety. Price 20c per lb.

**Atlas Sorgo** A new variety of cane which is a cross between White Kafir corn and sourless cane. When planted in rows with Corn Planter it requires 7 to 10 lbs. seed per acre and will mature in around 120 days. Stalks are 7 to 10 feet in height, leafy, very juicy and sweet. Excellent for Silage. Price per lb. 20c; 10-lb lot, 15c per lb.; 100-lb. lots, 14c per lb.

## REED CANARY GRASS

This is a hardy perennial which yields large amounts of palatable and nutritious hay, and also provides excellent pasture. Aside from reproducing itself by seed, it spreads by underground stems, forming a thick, heavy turf when established. It is adapted to the climate of the northern states, being affected little by drouth or cold and thrives well in the shade. This grass has the characteristic of remaining green throughout the growing season; not exhibiting the summer-dormant period following seed production as do most of the pasture grasses. A fine smooth seed bed, such as that usually prepared for small grains, is satisfactory. The seed can be sown in the late fall or early spring. Seed sown just before the ground freezes up will lie in the ground over winter and will be ready to grow in the early spring. Seeding rates are from 5 to 8 pounds per acre broadcast when sown alone. Price per lb., 75c.

## Plant for Early Hog Pasture

**Canadian Field Peas** When sown with Oats at rate of one bushel peas and one bushel oats (preferably Columbia) make a wonderful quick pasture or hay as you may desire to use them. Peas are a legume almost equal to clovers. Sow same time as oats. Price per bu. \$6.50.

**Dwarf Essex Rape** Dwarf Essex Rape is a pasture plant for all kinds of livestock—sheep, cattle, and hogs. As it grows very rapidly, the pasture will be ready in five weeks from the time of sowing. Unlike other forage plants, rape can be sown at any time during spring and summer so a good pasture may be had whenever it is needed. Dwarf Essex Rape will prepare sheep and hogs for market better in less time than any other forage plant.

May be sown in corn at last cultivation. Good results are generally obtained for late fall pasture when Dwarf Essex Rape is sown after the spring grain has been harvested. When sown broadcast, 6 to 8 pounds may be sown per acre. Price, per lb., 30c; 10 lbs. or over, per lb., 25c.



## Early Hybrids M15, M34, Cash or Blue Clarage

described on pages 36 and 42. Planted just as soon as at all possible and in which you have sown Dwarf Rape at last cultivation will furnish plenty of early hog feed just when you need it most.

# SCARFF'S ALFALFA SEED FOR BETTER STANDS

**Alfalfa Seed** Oklahoma Grown—Alfalfa seed grown in the northern counties along the Kansas line produce a large quantity of Alfalfa seed that is equally hardy to the Kansas seed. We use this seed on our farms and it has been sown all over Ohio with good results. We recommend our lot of seed to you very highly. Price per bu., \$19.00; per 1/2 bu., \$10.00; per 1/4 bu., \$5.00.

**Alfalfa Seed** Kansas Grown—Alfalfa is grown more extensively for hay purposes than any other Legume. We do not need to review its merits to you. The important part is to sow seed that is hardy for your locality. Seed that is of good quality and free of weeds. Kansas grown Alfalfa seed has been definitely recommended as most satisfactory and hardier for Ohio. Our seed is pure and we know it is as good as you can secure anywhere. If you are in doubt we will gladly send sample to you. Price, per bushel, \$20.00; per 1/2 bu., \$10.50; per 1/4 bu., \$5.50.



**Brome Grass** (*Bromus inermis*)—A perennial grass that has gained a great deal of popularity in recent years because of its heavy yields with Alfalfa. It should not compete with Timothy as a straight hay crop but sown at rate of 5 to 10 pounds per acre along with the regular seeding of Alfalfa it makes a remarkable yield of very palatable hay. Because of the latter it is very valuable as a pasture crop especially when sown with Alfalfa. Price per lb. 25c.

**Red Top** A grass valuable in every mixture; grows on any soil and is the best wet land variety we know. It is drought resistant and a vigorous grower. Price per lb. 27c.

## White Blossom Sweet Clover

Will grow in any part of the United States and will thrive in poorest sandy soil where no other kind will grow. Ranks first of all clovers to enrich your soil. Sweet Clover sown in the spring can be cut for hay in same fall sown. Has great food value as well as being the greatest soil builder. Sweet Clover is one legume that is cheap and we believe the best value you can purchase. Do not overlook Sweet Clover this year. Price per 1/2 bu., \$6.00; per bu., \$12.00.

## Yellow Blossom Sweet Clover

A biennial similar to white except growth is not so strong, stems are finer and a more abundant supply of leaves is produced. Makes finer grade of hay. Price per 1/2 bu. \$6.00; per bu. \$11.50.

**Grimm Alfalfa Seed** Grimm Alfalfa is beyond doubt one of the hardest types of Alfalfa. Where you are troubled with winter killing you should use only Grimm. Its root system is of the spreading type and resists pulling better than most kinds. It has been most difficult to secure in recent years and we are pleased to again offer Grimm to you. Price, per bu., \$35.00; per 1/2 bu., \$18.00; per 1/4 bu., \$9.00.

**Ranger Alfalfa Seed** Hardy a s Grimm — Bacterial wilt Resistant. Ranger is composed of five selections from Cossack, Turkestan and Ladak Alfalfa and is most valuable because of its persistent resistance to bacterial wilt which causes low yields in most of our Alfalfa. In addition it is as winter hardy as Grimm. This combination makes Ranger a most profitable investment, especially if you want to leave your field over a period of years. You gain not only the long life for your Alfalfa stand which saves reseeding but also increased yield which increases profits. Price, per bu., \$60.00; per 1/2 bu., \$31.00; per 1/4 bu., \$16.00.

**Chewings Fescue** A very hardy grass which will grow well in shady spots and with little moisture. Thrives on almost any soils. Excellent for shaded pastures. Sow 30 lbs. per acre in early Spring or Fall. Price per lb. \$1.00; 10 lb. lots, per lb., 90c.

**Scarff's Buckwheat** This variety produces the heaviest yield of the best quality buckwheat; can be sown as late as August, using about one bushel seed per acre. \$4.00 per bu.

## Korean Lespedeza

This new Clover is especially adapted to the southern half of our state and farther south. It will grow on the poorest soils. It is a wonderful pasture crop and a quick soil builder. It is an annual clover but reseeds itself very readily and maintains a permanent stand. Our seed is of good quality. Price per bu. of 25 lbs. \$3.50.

**IMPORTANT** Price of all Farm Seed is subject to change without notice. We make every effort to establish our prices and keep them, however, as stocks must be replaced, prices may fluctuate. However, you will always find our prices very fair for quality seed.

## LAWN SEED

We offer a special mixture of extra good quality Lawn Seed that we do not hesitate to recommend very highly. Many mixtures carry high percentages of objectionable weeds that soon smother out the grass itself. We mix only the best grades of seed which insures a good stand of grass. You cannot afford to take chances with your lawn as once you have sown the weeds they are very difficult to get rid of. The best policy is to sow clean seed. We mix two grades of seed, one for ordinary seeding and another for shady spots. One pound of seed will sow approximately 250 to 300 square feet.

"HEAVY SOD" MIXTURE—Price, per lb., \$1.10; 5-lb. lots, \$1.05 per lb., postpaid. By express, not prepaid, price per lb., \$1.00; 5-lb. lots, per lb., 95c. Ask for prices in larger quantities.

"SHADY SPOT" GRASS SEED—Prices, 10c per lb. higher than Heavy Sod Mixture.



"Pride Yourself on Having a Good Lawn"

# CLOVER SEED

**Medium Red Clover** The Farmer's Standard Hay and Seed Legume. We are faced again this year with a very short crop of Red Clover seed. Here in Ohio production was lowest in years. This will make it much more important that you buy only the best grade of seed free from weeds and with good germination. Select your clover only by the analysis tag as you are unable to see many weed seeds with the naked eye. We will gladly send you a sample of our seed to compare with any other lot you can secure. You can make your seeding cheaper by adding Alsike and Timothy which are not so high in price and make excellent hay of high nutrient value when grown along with Red Clover. If you expect to pasture the field for a year or so you can add much volume and value as well by adding one-half to one pound of Ladino Clover (description below). **Price Red Clover, Best quality, \$40.00 per bu.; 1/2 bu., \$20.00; per peck, \$10.00.**

**Mammoth Red Clover** Sometimes known as Sapling Clover. This clover grows somewhat rough and tall. Produces only one crop of either hay or seed. It is, however, an excellent soil builder and is preferred by many farmers. **Price for best quality seed \$39.00 per bu.; per 1/2 bu., \$20.00; per peck, \$10.00.**



— **Special Notice** —  
**CUMBERLAND RED CLOVER**

We have just received a lot of this new heavy-yielding disease resistant Red Clover, we can offer at \$43.80 per bushel.

**Alsike Clover** Much like red clover except has white blossoms, is not so tall and finer stemmed. Seed is smaller and goes farther—sure catch and less liable to freeze than red clover. Many sow mixture of red and Alsike. We can verify origin of all our seed and have only one grade, which is best we can possibly secure. **Price, per 1/2 bushel, \$15.00; per bushel, \$30.00.**

**Timothy Seed** The value of Timothy in seed mixture has been vastly underestimated. When grown with Red Clover, Alfalfa or Alsike it carries the same feeding value as the Legumes. It, too, will help insure a stand as many times it will catch when other seed will not. **Price per bu., \$4.50; per 1/2 bu., \$2.50.**

**Ladino Clover** This clover is one of the most valuable additions to your clover seedings especially if you want to pasture your meadow. It grows larger than white clover, produces an enormous amount of foliage that is most nutritious for all live stock. The seed is very small and is very easy to grow. Use only once 1/2 pound to one pound seed in your mixture per acre. Many poultry growers use it on their chicken ranges where it has been of special value. It should be included in any mixture used to thicken your old pastures. **Price per lb., \$2.75; 10-lb. lots, per lb., \$2.70.**

**White Dutch Clover** Lawn and pastures—makes a small compact growth, covering the ground completely. Can be sown either in spring or fall. **Price per lb., \$1.00; 10-lb. lots, \$0.90 per lb., postpaid. 10c less per lb. express.**

**Rox Orange Cane (Sorghum)** This outstanding medium early maturing variety was developed and is sown very extensively in Wisconsin. It was developed primarily for syrup but is grown over a wide area for silage. It is a high producer of most delicious syrup. We grew quite an acreage this year and recommend it to you without reservation as the best we have ever grown either for quality of syrup or for silage. Whether you have only a small patch in your garden or for a large acreage we would use only Rox Orange Cane. **Price per lb., 30c; 10 lbs., 25c per lb.**

**Amber Cane (Sorghum.)** A general favorite, grows 10-12 feet high. Can sow as late as July. Requires one package seed per acre. Many farmers plant cane with their ensilage corn. **Price 25c per lb.; 10-lb. lots, per lb., 20c.**

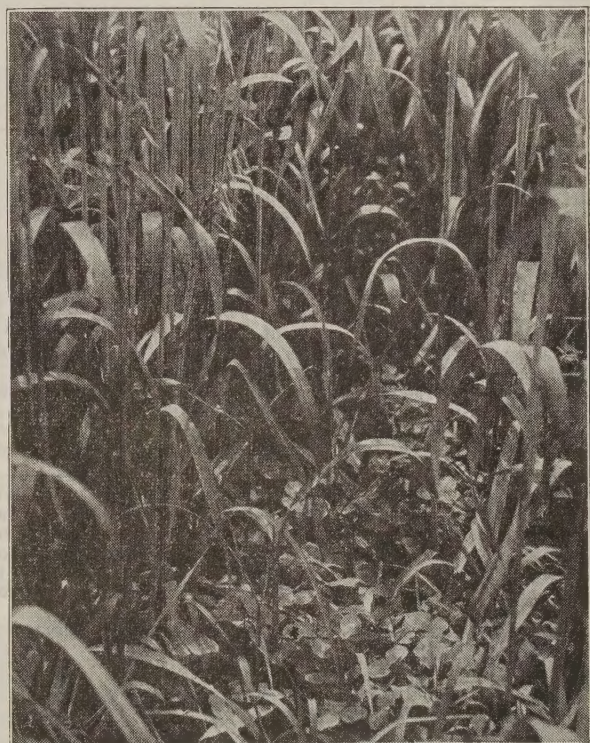
**Kentucky Blue Grass** A hardy perennial grass familiar to everyone. Where permanent pastures are desired it should be sown with other grasses about 15 lbs. per acre. When sown alone, 25 lbs. per acre. Will grow anywhere. **Price, per lb., 75c; 10-lb. lot, per lb., 60c; 100-lb. lots, per lb., 50c.**

**Orchard Grass** A very desirable grass especially where there is some shade. More leafy and taller than other grasses. Ripens earlier than Timothy. Thrives well on most any soil. Is very nutritious if cut when in bloom. **Price, per lb., 35c; 100-lb. lots, per lb., 30c.**

**Special Permanent Pasture**

Consists of Kentucky Blue Grass, Timothy, Alsike, Red Clover, Alfalfa, and Yellow Sweet Clover, in just the right proportions for a good sod. Sow at rate of 14 pounds per acre. **Price per lb., 55c.**

For wet spots in the field or for wet fields we have a special mixture. Please specify when ordering. **Price of mixture for wet ground, per lb., 60c.**



Pure Seed is essential for a good stand of grass

**DISCLAIMER ON ALL FARM SEED**

We allow you 20 days to test our seed any way you see fit, and if at the expiration of this time it is not entirely satisfactory, return it to us promptly and we will refund your money, but we do not warrant in any way, express or implied, the contents, or the description, quality, productiveness, or any other matter of any seeds sold by us and we will not be in any way responsible for the crop. If the purchaser does not accept these seeds on the above terms, he must return them at once, and money will be refunded.



# NEW--CLINTON OATS--NEW

**Resists Lodging — Heavy Yield — High Bushel Weight**

Clinton Oats has been grown for several years in states west of Ohio with unusually heavy yields and almost perfect field performance. It is definitely resistant to the diseases that have been causing almost complete failure of most Oats varieties. We have observed Clinton growing for two seasons and frankly marvel at the big rugged straw that makes it stand so well even after it matures. This makes it a most ideal kind for combining. Yields have been way above average in every locality in which it has been grown. It seems this has been the first variety introduced for many years that has really been dependable over a wide area. It is of mid-season maturity which allows you to almost go directly from your wheat to the Oats. **Price per bu. \$3.00.**

**Columbia** This variety is one of the few kinds that has given satisfactory performance the last few years. This season our Columbia produced around 60 bushels per acre of heavy good quality Oats. It is an early kind, maturing immediately after wheat. Slightly gray in color. Straw not too heavy and must be combined as soon as ripe. Excellent as nurse crop for legumes. **Price per bushel, \$2.25.**

**Franklin** Franklin Oats originated as a plant selector made in 1922 from the Fulghum variety. Its characteristics as compared with Fulghum are as follows. The straw is longer and decidedly stiffer, it matures slightly later than Fulghum, has an open panicle type of head, while the heads of typical Fulghum tend toward the side-head type. The color of chaff of Franklin oats is white while the chaff of Fulghum is yellow. The kernel color is like that of Fulghum (red). The head type and chaff color should make it rather easy to identify this variety and to maintain pure seed stocks. Franklin oats is nearly free of abnormal types that occur so frequently in Fulghum. **Price, \$2.25 per bu.**

| CHARACTERISTICS OF CLINTON OATS<br>As Compared To Older Varieties |                    |           |             |                      |          |
|-------------------------------------------------------------------|--------------------|-----------|-------------|----------------------|----------|
| Variety                                                           | Averages 1941 1946 |           |             | Average<br>1942-1946 | 1946     |
|                                                                   | Height             | Date Ripe | Test Weight | Yield                | Yield    |
| CLINTON                                                           | 34.2 inches        | July 13   | 35.1 lbs.   | 72.8 bu.             | 92.9 bu. |
| VICLAND                                                           | 33.4 inches        | July 10   | 32.7 lbs.   | 71.8 bu.             | 83.9 bu. |

All the above figures are results of 1/40 acre trials at Lafayette. The land used in these tests was not infected with the oats disease—Victoria blight. As a result, the Tama and Vicland varieties show up very well in the yield results.

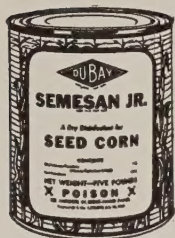
**Wayne** Introduced by Ohio Experiment Station where it has made remarkable yields. One of the best of all mid-season kinds for Ohio—Wayne has a good stiff straw which prevents lodging except in extreme cases. The grain is large and plump. Hull is thin and grinds easily. This is a year when every effort should be made to insure a heavy crop. We have priced our oats low to give you every advantage possible. Your increased yield will pay you many times for having used Wayne seed. Order as soon as you know your requirements as our stock of good seed is not large. **Price \$2.50 per bushel.**



You can produce more grain with Clinton Oats

# SCARFF'S SEED FOR YOUR PROFIT

## SEMESAN Jr. for Corn



New Improved Semesan Jr. should help to give you better stands. It generally protects the seed from decaying and the seedlings from blight and root rots caused by such fungi as Diplodia and Gibberella. Most Iowa and Illinois tests reported Semesan Jr. treatment increased the stand 5 to 15%.

Use 1½ oz. per bushel of seed, thus costing only around 2c per acre. Price 1½ oz. packet 17c; 12 oz. can 62c; 6¼ lb. can \$4.16.

## SEMESAN Bel for Potatoes



An organic mercury compound for easy quick dipping of seed Potatoes. Safe and most effective in controlling parasitic organisms without injuring either the cut or the whole potato. Costs only 1½ to 3 cents per bushel and has increased yields up to 25%. Booklet with complete information free.

### PRICES FOR SEMESAN BEL

2 oz. (8 bu.)...35c 1 lb.....\$1.83  
4 oz. ....50c 4 lb..... 6.33

## Treat Seed Oats and Barley with CERESAN

Controls loose smut and other diseases which lower Oats yield. Folder with complete description free. Price of Ceresan:

1-lb. can.....\$0.90 4-lb. can.....\$3.00 8-lb. can.....\$6.00  
½ Ounce Treats 1 Bushel of Grain.

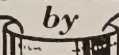


**Crow-Tox** Protect your corn by using Crow-Tox. It aids in preventing Crows, English Starlings, Pheasants, Blackbirds, Woodchucks, Squirrels, Moles, etc., from pulling and digging up your planted corn. You will have better results if you scatter a few kernels of the corn about the field after planting.

Crow-Tox will not injure the seed corn, but is a positive protection in the prevention of seed rotting in the soil. Larger crops are assured through its use. Less labor is involved, for Crow-Tox eliminates replanting. Put one bushel in box or can and pour on one-half pint can of Crow-Tox. Mix thoroughly and seed is ready to plant. Price ½ pint, 60c; pint, \$1.00; quart, \$1.50; gallon, \$4.00.

APPROX. 70,000,000 LBS. OF AIR-NITROGEN ABOVE EVERY ACRE.  
THIS IS AVAILABLE FREE FOR SOIL AND CROP IMPROVEMENT IF YOU

# CONVERT LEGUME SEEDS INTO FERTILIZER PLANTS

Inoculating  with

## NITRAGIN

50 YEARS

SERVICE

ALFALFA RED CLOVER SWT. CLOVER COWPEAS PEAS VETCH A. W. PEAS SOYBEANS LESPEDEZA PEANUTS BEANS ALL-LEGUMES

## BUILD UP YOUR SOIL — Inoculate Your Legumes With NITRAGIN

Inoculate your Legume seeds tho planted on fields that have been inoculated before. Field tests have shown that better crops are harvested when Legume seeds are inoculated even when planted on fields where inoculated seeds of the same Legume crops had grown the previous year.

### 1948 NITRAGIN INOCULATION PRICES. When Ordering, ALWAYS State Name of Seed

#### ALFALFA

Sweet, Bur, Hubam Clovers  
Size Retail  
1 bu. ea.....\$ .50  
2½ bu. ea..... 1.00

#### CLOVERS

Red, Alsike, Crimson  
White and Ladino  
1 bu. ea.....\$ .50  
2½ bu. ea..... 1.00

#### PEAS (All Varieties)

VETCHES (All Varieties)  
Size Retail  
100 lbs. (Inoculates up to 100 lbs. seed) ea.....\$ .50  
1200 lb. size ea..... 5.70  
(12-100 lb. size cans)

#### LUPINES (All Varieties)

100 lbs. (Inoculates up to 100 lbs.) ea.....\$ .50

BEANS—Navy, Pinto, Wax, String, Kidney, Gr. Northern  
1 bu. ea.....\$ .35

#### LESPEDEZA

Size Retail  
100 lb. size (Inoculates up to 100 lbs. seed).....\$ .50

#### SOYBEANS (All Varieties)

Small (Inoculates up to 120 lbs. seed) .....\$ .30  
5 bu. ea..... .55  
25 bu. (one can) ea.. 2.50  
30 bu. (one ctn.) ea.. 3.25  
(Contains 6-5 bu. cans)

#### PEANUTS, COW PEAS

Size Retail  
Small (Inoculates up to 120 lbs. seed) .....\$ .30  
5 bu. ea..... .55  
25 bu. (one can) ea.. 2.50  
30 bu. (one ctn.) ea.. 3.25  
(Contains 6-5 bu. cans)

#### GARDEN SIZE Garden Peas and Beans Sweet Peas, Lupines and Edible Soybeans

Enough for 8 lbs. seed  
Retail Price 10c each

**NITRAGIN — the Oldest and Most Widely Used Inoculator in America**



# SCARFF'S

## HYBRID SEED

*The Corn of Plenty*

**T**he highest yielding Hybrid Seed Corn results only from most careful production methods. Our seed is all certified. Our warehouse, drying and grading equipment is of the most efficient design. Scarff's Hybrid Seed is in every way the best at any price.

# W. N. SCARFF'S SONS

*New Carlisle, Ohio*

OVER 50 YEARS OF SERVICE IN AGRICULTURE & HORTICULTURE